


2x HEAVY HEX
NUTS. SNUG
TIGHT

5 Ø THREADED ROD

- NOTE: RECONFIGURE
M8-4 RAIN SHIELD AS
REQUIRED TO
ACCOMMODATE JUMPER
SYSTEM

- $\frac{3}{4}$ " x $3\frac{1}{2}$ " STIFFENER
PLATE, TYP.

- SPACER PLATES
3"x14"x3½" THICK,
TYP.

5/16  3 SIDES
TYP.

- 1½"x9"x9"
NUT PLATE

- 2x HEAVY HEX
NUTS. SNUG TIGHT
PLUS 1/4 TURN

1/2"x3 5/8" PLATES
T&B

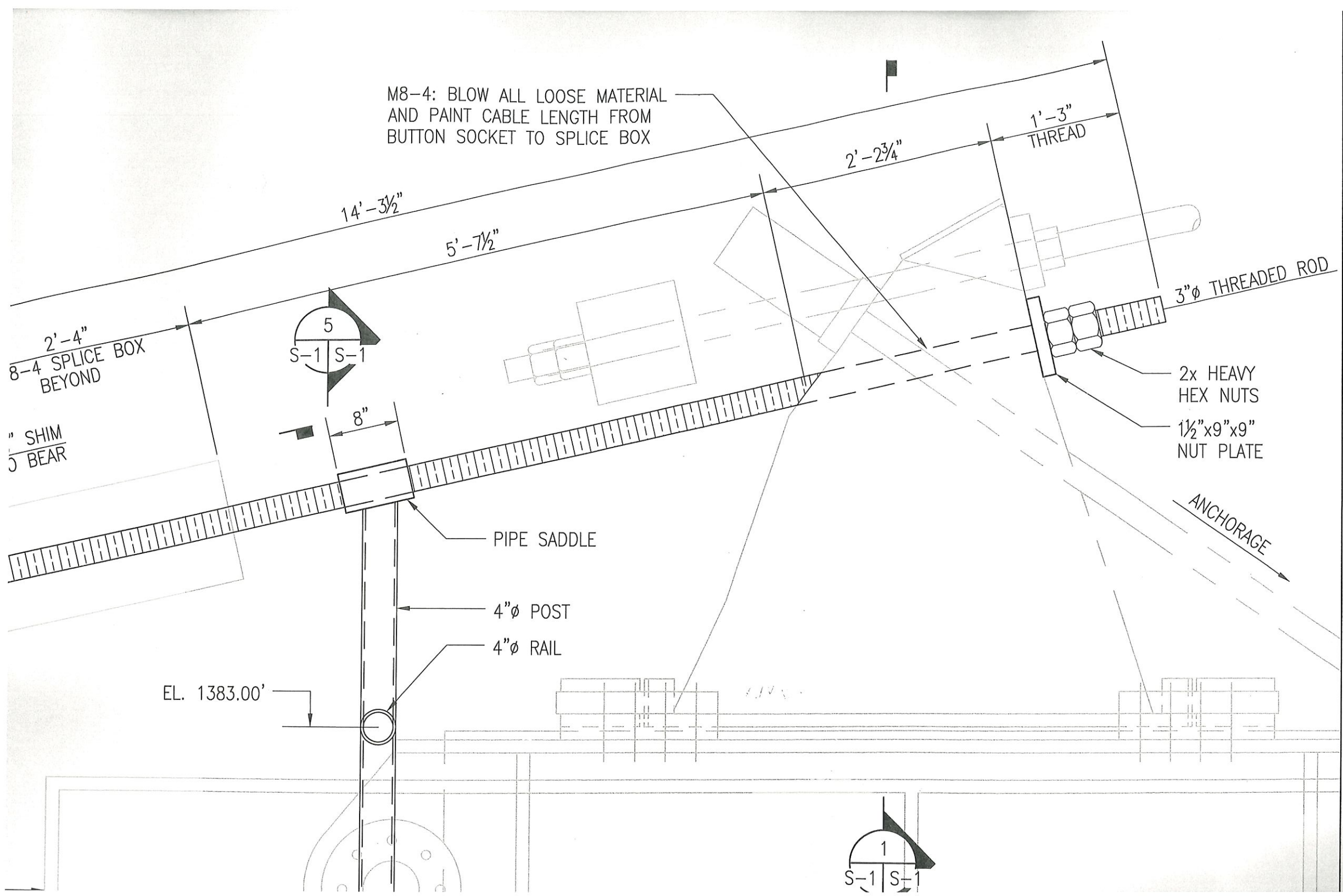
TYP.

2-MC18x58 w/ $\frac{1}{2}$ "x $3\frac{5}{8}$ " FLANGE PLATES

SECTION

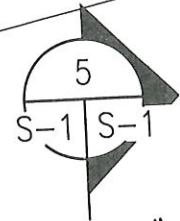
SCALE: 1" = 1'-0"

4



M8-4: 1
AND PA
BUTTON

14'-3 1/2"



8"

2'-4"
M8-4 SPLICE BOX
BEYOND

2'-10 3/8"
THREAD

3/8" SHIM
TO BEAR

1'-7"

1'-3"



PLATFORM

PROVIDE SHIM PLATES
TO BEAR TO MATCH
EXISTING WELDED
STRAPS

EL. 1383.00'

Ø 3"Ø THREADED ROD

POST SADDLE: PIECE OF
4"Ø X-STRONG PIPE

1/4"

1/4"

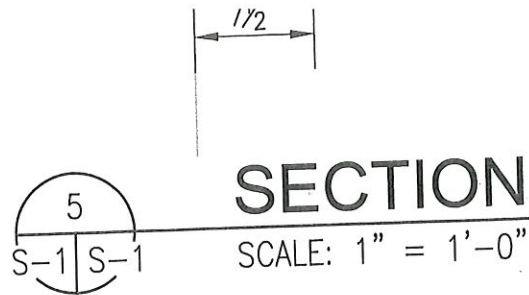
4"Ø X-STRONG PIPE

1"x12"x12" BASE PLATE w/ 5/8"Øx6 5/8"
ANCHORS

CER

ON
CABLES
PROPOSED

33.00'



3"Ø THREADED ROD

NOTE: RECONFIGURE
M8-4 RAIN SHIELD AS
REQUIRED TO
ACCOMMODATE JUMPER
SYSTEM

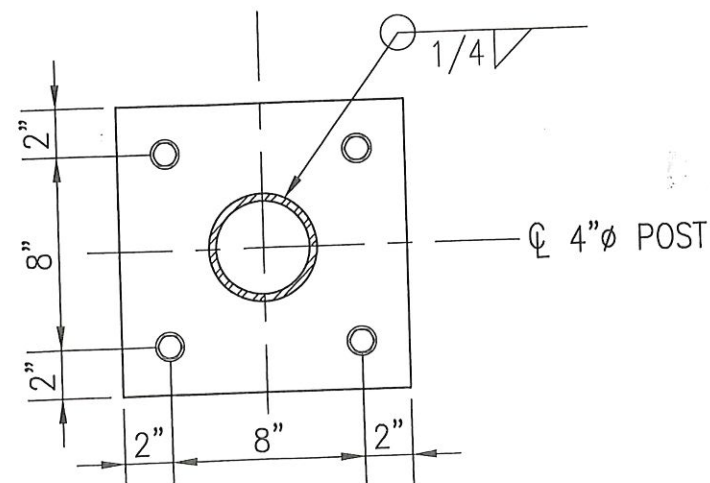
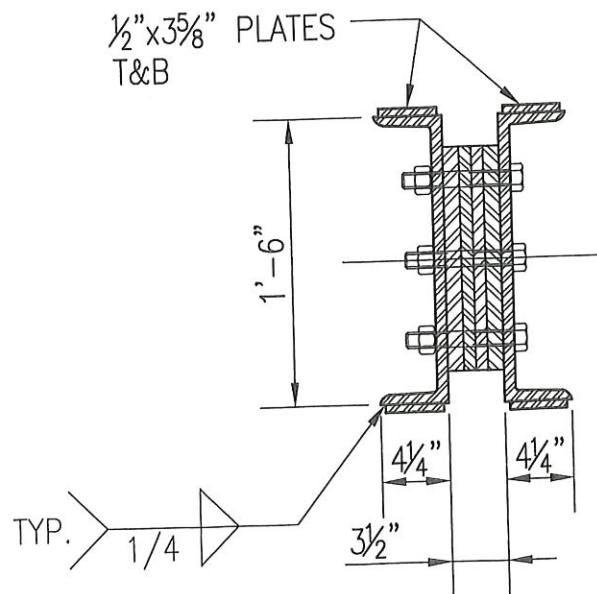
3/4"x3 1/2" STIFFENER
PLATE, TYP.

SPACER PLATES
3"x14"x3 1/2" THICK,
TYP.

5/16" 3 SIDES
TYP.

1 1/2"x9"x9"
NUT PLATE

2x HEAVY HEX
NUTS. SNUG TIGHT
PLUS 1/4 TURN



NOTES:

1. FIELD VERIFY /
2. MATERIALS:
CHANNELS
PLATES
THREADED
BOLTS
3. PAINT ALL STE

$7\frac{1}{2}$