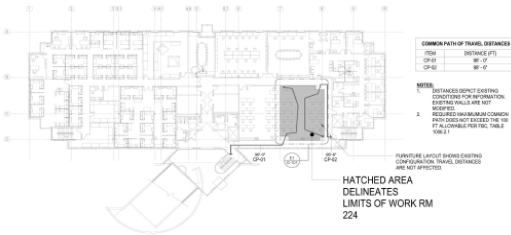


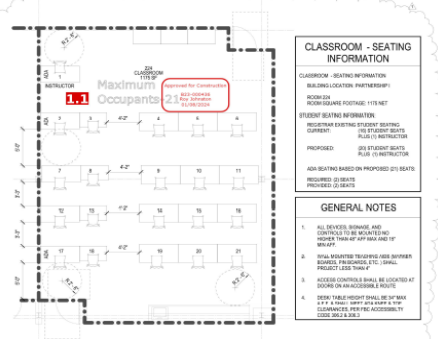


PROJECT INFORMATION	
PROJECT NAME: PARTNERSHIP 1 ROOM 224 ADA PLAN FOR OCCUPANCY CAPACITY INCREASE	DATE COMPLETED: MARCH 6, 2024
PROJECT NUMBER: 24811101	PROJECT MANAGER: DJ THOMAS
PROJECT DESCRIPTION: ADA STUDY AND LIFE SAFETY REVIEW TO CONFIRM THE ALLOWABLE OCCUPANCY OF CLASSROOM 224 IN THE PARTNERSHIP 1, IN ORDER TO INCREASE THE OCCUPANCY TO ADD ADDITIONAL STUDENT SEATING.	

PROJECT IMAGES



B1 FLOOR PLAN, OVERALL LIFE SAFETY 1/4" = 1'-0"



E1 FLOOR PLAN, ENLARGED LIFE SAFETY 1/4" = 1'-0"

NOTES:

- REFER TO SHEETS G-01 FOR GENERAL ABBREVIATIONS AND NOTATIONS.
- CONTRACTOR TO VERIFY THE CONDUIT ACCESS IS IDENTIFIED AT ALL TIMES DURING CONSTRUCTION.
- CHANGED LINES REPRESENT THIS AND/OR ARE TO BE REMOVED AND RE-INSTALLED AS NECESSARY.
- ALL CUT SIGNS AND VISUAL NOTIFICATIONS APPLIED ARE TO BE MAINTAINED AND OPERATIONAL AT ALL TIMES.
- FURNITURE DISTANCES ARE TO BE PROVIDED AND FINA DEED BY THE END USER.

LIFE SAFETY SYMBOLS

- NON-RATED PARTITION
- 1 HOUR FIRE BARRIER (EXISTING)
- TRAVEL DISTANCE TO EXIST
- 4' W/ WIDTH OF EXGRESS UNITS (N)
- FIRE EXTINGUISHER CABINET
- FIRE EXTINGUISHER, BALL MOUNTED
- WALL MOUNTED SPOKER
- SPOKER
- CEILING SPOKER STRIKE
- FIRE EXTINGUISHER
- WALL MOUNTED EXIT LIGHT
- CEILING MOUNTED EXIT LIGHT
- CEILING MOUNTED SMOKE DETECTOR
- GENERAL FLOOR FINISH
- BUSINESS OCCUPANCY GROUP
- TOTAL WORK AREA
- ALLOWABLE TOTAL OCCUPANCY (S)

PROJECT SUMMARY

THE PROJECT IS TO CONFIRM THE ALLOWABLE OCCUPANCY OF EXISTING CLASSROOM 224 IN THE PARTNERSHIP 1 BUILDING. THE EXISTING MECHANICAL AND ELECTRICAL SYSTEMS WILL BE MAINTAINED AND THE EXISTING MECHANICAL AND ELECTRICAL SYSTEMS WILL BE MAINTAINED AND THE EXISTING MECHANICAL AND ELECTRICAL SYSTEMS WILL BE MAINTAINED.

APPLICABLE CODES (CURRENT/APPLICABLE)

FLORIDA BUILDING CODE - 7TH EDITION
FLORIDA BUILDING CODE - 13TH EDITION
FLORIDA FIRE PREVENTION CODE - 7TH EDITION
MFA 1 - FIRE CODE 2018 EDITION
MFA 10 - NATIONAL FIRE PROTECTION ASSOCIATION (NFPA) 101 - LIFE SAFETY CODE 2018 EDITION AND AMENDMENTS
FLORIDA MECHANICAL CODE - 13TH EDITION
FLORIDA MECHANICAL CODE - MECHANICAL 7TH EDITION
FLORIDA ELECTRICAL CODE - 2017 EDITION
MFA 12 - NATIONAL ELECTRICAL CODE 2017 EDITION
MFA 12 - NATIONAL FIRE ALARM CODE 2017 EDITION

ACCESSIBILITY FLORIDA BUILDING CODE, ACCESSIBILITY 7TH EDITION

ADDITIONAL JURISDICTION

UNIVERSITY OF CENTRAL FLORIDA BUILDING CODE DEPARTMENT
UNIVERSITY OF CENTRAL FLORIDA BUILDING CODE DEPARTMENT
STATE FIRE MARSHAL - FLORIDA

APPLICABLE UNIVERSITY OF CENTRAL FLORIDA STANDARDS

USE EXISTING CONSTRUCTION AND FINISHES (UNIVERSITY OF CENTRAL FLORIDA STANDARDS 12.1)
USE EXISTING CONSTRUCTION AND FINISHES (UNIVERSITY OF CENTRAL FLORIDA STANDARDS 12.1)
USE EXISTING CONSTRUCTION AND FINISHES (UNIVERSITY OF CENTRAL FLORIDA STANDARDS 12.1)

OCCUPANCY CLASSIFICATION

TO ACCORD WITH ORIGINAL DESIGN INFORMATION, USE MFA 101, TABLE 6.0.1.1.2
OCCUPANCY CLASSIFICATION
PRIMARY FUNCTION: GROUP B - BUSINESS OCCUPANCY WITH NEARBY, ACCESSIBLE...

DATE: 12/05/2023
SCALE: 1/4" = 1'-0"
PROJECT NUMBER: 24811101
PROJECT NAME: PARTNERSHIP 1 ROOM 224 ADA PLAN FOR OCCUPANCY CAPACITY INCREASE
DESIGNER: KUBO STUDIO
DATE: 12/05/2023
SCALE: 1/4" = 1'-0"
PROJECT NUMBER: 24811101
PROJECT NAME: PARTNERSHIP 1 ROOM 224 ADA PLAN FOR OCCUPANCY CAPACITY INCREASE
DESIGNER: KUBO STUDIO
DATE: 12/05/2023
SCALE: 1/4" = 1'-0"
PROJECT NUMBER: 24811101
PROJECT NAME: PARTNERSHIP 1 ROOM 224 ADA PLAN FOR OCCUPANCY CAPACITY INCREASE
DESIGNER: KUBO STUDIO

LIFE SAFETY PLAN & INFORMATION

G-101



PROJECT INFORMATION	
PROJECT NAME: PARTNERSHIP 1 ROOM 224 ADA PLAN FOR OCCUPANCY CAPACITY INCREASE	DATE COMPLETED: MARCH 6, 2024
PROJECT NUMBER: 24811101	PROJECT MANAGER: DJ THOMAS
PROJECT DESCRIPTION: ADA STUDY AND LIFE SAFETY REVIEW TO CONFIRM THE ALLOWABLE OCCUPANCY OF CLASSROOM 224 IN THE PARTNERSHIP 1, IN ORDER TO INCREASE THE OCCUPANCY TO ADD ADDITIONAL STUDENT SEATING.	

PROJECT COST	
DESIGN COST	\$ 5,200.00
ARCHITECT / ENGINEER / INTERIOR DESIGN	\$ 5,200.00
CONSTRUCTION COST	\$ -
DIVISION 1 - GENERAL REQUIREMENTS (DUMPSTERS, ETC.)	\$ -
DIVISION 2 - EXISTING CONDITIONS	\$ -
DIVISION 3 - CONCRETE	\$ -
DIVISION 4 - MASONRY	\$ -
DIVISION 5 - METALS	\$ -
DIVISION 6 - WOOD, PLASTICS & COMPOSITES	\$ -
DIVISION 7 - THERMAL & MOISTURE PROTECTION	\$ -
DIVISION 8 - OPENINGS	\$ -
DIVISION 9 - FINISHES	\$ -
DIVISION 10 - SPECIALTIES	\$ -
DIVISION 11 - EQUIPMENT	\$ -
DIVISION 12 - FURNISHINGS	\$ -
DIVISION 13 - SPECIAL CONSTRUCTION	\$ -
DIVISION 14 - CONVEYING EQUIPMENT	\$ -
DIVISION 21 - FIRE SUPPRESSION	\$ -
DIVISION 22 - PLUMBING	\$ -
DIVISION 23 - HVAC	\$ -
DIVISION 26 - ELECTRICAL	\$ -
DIVISION 27 - COMMUNICATIONS	\$ -
DIVISION 28 - ELECTRONIC SAFETY & SECURITY	\$ -
DIVISION 31 - EARTHWORK	\$ -
DIVISION 32 - EXTERIOR IMPROVEMENT	\$ -
DIVISION 33 - UTILITIES	\$ -
COMMISSIONING	\$ -
GENERAL LIABILITY	\$ -
GENERAL CONDITIONS (STAFFING, ETC.)	\$ -
CONTRACTOR'S FEE (OVERHEAD & PROFIT)	\$ -
PAYMENT & PERFORMANCE BOND (NOT REQ'D IF UNDER \$100K)	\$ -
INFORMATION TECHNOLOGIES & RESOURCES COST	\$ -
UCF IT	\$ -
OFFICE OF INSTRUCTIONAL RESOURCES (OIR)	\$ -
FACILITIES & SAFETY COST	\$ 672.00
BUILDING CODE OFFICE	\$ 100.00
STATE FIRE MARSHALL	\$ -
PROJECT MANAGEMENT FEES	\$ 572.00
FACILITIES OPERATIONS ALLOWANCE	\$ -
CONSTRUCTION CONTINGENCY (10%, REFUNDED IF NOT USED)	\$ -
TOTAL PROJECT COST	\$ 5,872.00

PROJECT TIME		
START	PROJECT SUBMITTED BY CLIENT	0.75 MONTHS
	SPAA, F&S REVIEW	
	PM ASSIGNED	
	PM CONTACTS REQUESTER	
	PM DEVELOPS SCOPE	
DESIGN	A/E SELECTED	5.5 MONTHS
	A/E PROPOSAL REVIEW	
	MPP TO CLIENT	
	CLIENT APPROVAL AND FUNDING	
	REQUISITION GENERATED	
	PO ISSUED (NOTICE TO PROCEED)	
	A/E DESIGN	
	WORKSHOPS	
BID/PERMIT	PERMIT REVIEWS	NA
	S/S PERMIT DRAWINGS REC'D	
	PERMIT SUBMISSION	
	BUILDING CODE OFFICE REVIEW	
	STATE FIRE MARSHALL REVIEW	
	CONTRACTOR WALK-THROUGH	
	CONTRACTOR BID	
	PM REVIEWS BID	
	AVP F&S APPROVAL OF BID	
	PM PREPARES MPP	
CONSTRUCTION	MPP TO CLIENT	NA
	CLIENT APPROVAL AND FUNDING	
	REQUISITION GENERATED	
	PO ISSUED (NOTICE TO PROCEED)	
	CONSTRUCTION STARTS	
	RFIS, SUBMITTALS, DOCUMENTS	
	PROGRESS REVIEWS	
	PAYMENT APPLICATIONS, INVOICES	
CLOSE-OUT	INSPECTIONS	1.5 MONTHS
	CERTIFICATE OF COMPLETION	
	CERTIFICATE OF OCCUPANCY	
	BENEFICIAL OCCUPANCY BY CLIENT	
	PUNCH LIST COMPLETION	
	FINAL INVOICES	
OWNER'S MANUALS	1.5 MONTHS	
ASSET TURNOVER TO OPERATIONS		
ACCOUNTING CLOSE-OUT		
TOTAL PROJECT TIME - 7.75 MONTHS		