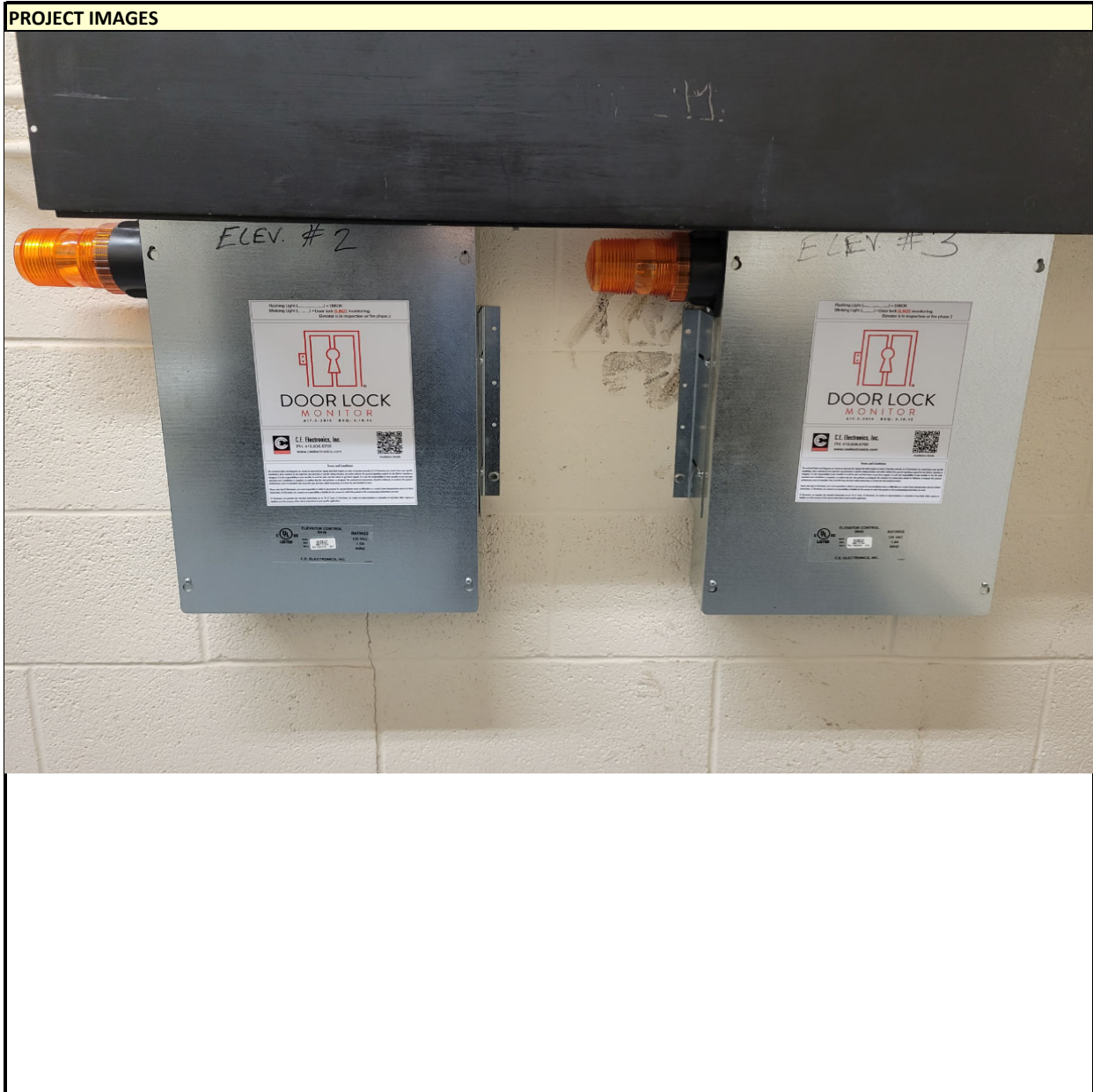




PROJECT INFORMATION	
PROJECT NAME: CAMPUS WIDE ELEVATOR DOOR LOCK MONITORING	DATE COMPLETED: SEPTEMBER 25, 2023
PROJECT NUMBER: 23CWP002	PROJECT MANAGER: CHRISTINA ROGERS
PROJECT DESCRIPTION: ELEVATOR DOOR LOCK MONITORING INSTALLED IN ALL ELEVATORS IN THE FOLLOWING BUILDINGS: MILLICAN HALL, COLLEGE OF SCIENCES, HEALTH SCIENCES 1, HEALTH SCIENCES 2, CREOL, PARTNERSHIP 2, VISUAL ARTS, BUSINESS ADMIN 1, JAMES AND ANNIE YING ACADEMIC CENTER, AND THE DOWNTOWN CENTROPLEX PARKING GARAGE. THIS MODIFICATION WILL PREVENT ELEVATORS FROM LEAVING THE FLOOR WITH THEIR DOORS OPEN DUE TO ACCIDENTALLY OR INTENTIONALLY BYPASSED DOOR CIRCUITS.	





PROJECT INFORMATION	
PROJECT NAME: CAMPUS WIDE ELEVATOR DOOR LOCK MONITORING	DATE COMPLETED: SEPTEMBER 25, 2023
PROJECT NUMBER: 23CWP002	PROJECT MANAGER: CHRISTINA ROGERS
PROJECT DESCRIPTION: ELEVATOR DOOR LOCK MONITORING INSTALLED IN ALL ELEVATORS IN THE FOLLOWING BUILDINGS: MILLICAN HALL, COLLEGE OF SCIENCES, HEALTH SCIENCES 1, HEALTH SCIENCES 2, CREOL, PARTNERSHIP 2, VISUAL ARTS, BUSINESS ADMIN 1, JAMES AND ANNIE YING ACADEMIC CENTER, AND THE DOWNTOWN CENTROPLEX PARKING GARAGE. THIS MODIFICATION WILL PREVENT ELEVATORS FROM LEAVING THE FLOOR WITH THEIR DOORS OPEN DUE TO ACCIDENTALLY OR INTENTIONALLY BYPASSED DOOR CIRCUITS.	

PROJECT COST	
DESIGN COST	\$ -
ARCHITECT / ENGINEER / INTERIOR DESIGN	\$ -
CONSTRUCTION COST	\$ 272,175.00
DIVISION 1 - GENERAL REQUIREMENTS (DUMPSTERS, ETC.)	\$ -
DIVISION 2 - EXISTING CONDITIONS	\$ -
DIVISION 3 - CONCRETE	\$ -
DIVISION 4 - MASONRY	\$ -
DIVISION 5 - METALS	\$ -
DIVISION 6 - WOOD, PLASTICS & COMPOSITES	\$ -
DIVISION 7 - THERMAL & MOISTURE PROTECTION	\$ -
DIVISION 8 - OPENINGS	\$ -
DIVISION 9 - FINISHES	\$ -
DIVISION 10 - SPECIALTIES	\$ -
DIVISION 11 - EQUIPMENT	\$ -
DIVISION 12 - FURNISHINGS	\$ -
DIVISION 13 - SPECIAL CONSTRUCTION	\$ -
DIVISION 14 - CONVEYING EQUIPMENT	\$ 272,175.00
DIVISION 21 - FIRE SUPPRESSION	\$ -
DIVISION 22 - PLUMBING	\$ -
DIVISION 23 - HVAC	\$ -
DIVISION 26 - ELECTRICAL	\$ -
DIVISION 27 - COMMUNICATIONS	\$ -
DIVISION 28 - ELECTRONIC SAFETY & SECURITY	\$ -
DIVISION 31 - EARTHWORK	\$ -
DIVISION 32 - EXTERIOR IMPROVEMENT	\$ -
DIVISION 33 - UTILITIES	\$ -
COMMISSIONING	\$ -
GENERAL LIABILITY	\$ -
GENERAL CONDITIONS (STAFFING, ETC.)	\$ -
CONTRACTOR'S FEE (OVERHEAD & PROFIT)	\$ -
PAYMENT & PERFORMANCE BOND (NOT REQ'D IF UNDER \$100K)	\$ -
INFORMATION TECHNOLOGIES & RESOURCES COST	\$ -
UCF IT	\$ -
OFFICE OF INSTRUCTIONAL RESOURCES (OIR)	\$ -
FACILITIES & SAFETY COST	\$ 24,770.64
BUILDING CODE OFFICE	\$ -
STATE FIRE MARSHALL	\$ -
FP&C PROFESSIONAL MANAGEMENT SERVICES	\$ 24,770.64
FACILITIES OPERATIONS ALLOWANCE	\$ -
CONSTRUCTION CONTINGENCY (10%, REFUNDED IF NOT USED)	\$ -
TOTAL PROJECT COST	\$ 296,945.64

PROJECT TIME		
START	PROJECT SUBMITTED BY CLIENT	3.25 MONTHS
	SPAA, F&S REVIEW	
	PM ASSIGNED	
	PM CONTACTS REQUESTER	
	PM DEVELOPS SCOPE	
DESIGN	A/E SELECTED	NA
	A/E PROPOSAL REVIEW	
	MPP TO CLIENT	
	CLIENT APPROVAL AND FUNDING	
	REQUISITION GENERATED	
	PO ISSUED (NOTICE TO PROCEED)	
	A/E DESIGN	
	WORKSHOPS	
	PERMIT REVIEWS	
BID/PERMIT	S/S PERMIT DRAWINGS RECV'D	5.25 MONTHS
	PERMIT SUBMISSION	
	BUILDING CODE OFFICE REVIEW	
	STATE FIRE MARSHALL REVIEW	
	CONTRACTOR WALK-THROUGH	
	CONTRACTOR BID	
	PM REVIEWS BID	
	AVP F&S APPROVAL OF BID	
	PM PREPARES MPP	
	MPP TO CLIENT	
	CLIENT APPROVAL AND FUNDING	
	REQUISITION GENERATED	
PO ISSUED (NOTICE TO PROCEED)		
CONSTRUCTION	CONSTRUCTION STARTS	1.5 MONTHS
	RFIS, SUBMITTALS, DOCUMENTS	
	PROGRESS REVIEWS	
	PAYMENT APPLICATIONS, INVOICES	
	INSPECTIONS	
	CERTIFICATE OF COMPLETION	
CLOSE-OUT	CERTIFICATE OF OCCUPANCY	1.25 MONTHS
	BENEFICIAL OCCUPANCY BY CLIENT	
	PUNCH LIST COMPLETION	
	FINAL INVOICES	
	OWNER'S MANUALS	
ASSET TURNOVER TO OPERATIONS	1.25 MONTHS	
ACCOUNTING CLOSE-OUT		
TOTAL PROJECT TIME - 11.25 MONTHS		