



7.0 INTERGOVERNMENTAL COORDINATION

Blank Page



7.0 INTERGOVERNMENTAL COORDINATION

*2025-35 CAMPUS MASTER PLAN
UPDATE*

CONTENTS

7.1 INTRODUCTION..... 3

7.2 GOALS, OBJECTIVES, & POLICIES 5

7.3 DATA & ANALYSIS..... 11

7.4 EXHIBITS - This Element has no exhibits.

Blank Page

7.0 INTERGOVERNMENTAL COORDINATION

7.1 INTRODUCTION

STATUTE & REGULATION



NARRATIVE



STRATEGIC PLAN ALIGNMENT

7.0 INTERGOVERNMENTAL COORDINATION is an element that is required by Florida Statute 1013.30(3).

The element must follow the guidelines stated in Florida Board of Governors (BOG) Regulations, Chapter 21.

BOG 21.210 states the purpose of the element as follows:

“This element identifies and resolves goals, objectives, policies and development proposed in campus master plans that may be incompatible with adjacent local governments, and regional and state agency plans. Intergovernmental coordination shall be utilized to the extent required to carry out the provisions of this Chapter.”

A metropolitan university is not distinct and separate from its community, but rather part and parcel of the surrounding region’s education, economic, and social vitality. As an anchor institution in the community, the University of Central Florida reflects, serves, and responds to the community’s needs, priorities, and goals by strengthening and diversifying the local economy; providing the knowledgeable and creative talent necessary to sustain business and civic organizations; and contributing to efforts which lift up the human condition.

As an institution predicated upon partnerships, UCF’s commitment to collaboration with the community spans from surrounding neighborhoods to industry leaders; from non-profit entities to governmental and quasi-governmental organizations that represent our region’s citizens and common interests.

UCF’s Campus Master Plan process must also reflect that commitment to both serve the surrounding region, and to involve our local partners in the planning process that will determine how we plan to meet the future economic, educational, and social needs of the Central Florida community. This element establishes the goals and framework by which UCF will share, develop, and seek input from others on the University’s CMP Update and its implementation.

This element aligns with one or more of the four priorities stated in the UCF strategic plan “*UNLEASHING POTENTIAL – Becoming the University for the Future*”, specifically:

Community and Culture

The Goals, Objectives, and Policies in the Intergovernmental Coordination element support UCF’s integration of community-facing functions to streamline connections between the university and its industry, community, and public partners. Two key priorities are:

- Establish comprehensive partnerships that integrate education, research, the arts, service, workforce development, and philanthropic engagement

7.0 INTERGOVERNMENTAL COORDINATION

SUSTAINABILITY

- Integrate community-facing functions to streamline connections between the university and its industry, community, and public partners.

Goals, Objectives and Policies that align with the Sustainability Tracking, Assessment & Rating System™ (STARS) Version 3.0¹ are shown in **green text**, with the specific *Category and Impact Area* and *Credit #* indicated in parentheses after the Goal, Objective, or Policy.

Specific STARS sections in this element are aligned with the Category and Impact Area, **Engagement (EN)**, and with this credit:

EN-6: Community Partnerships

RELATED ELEMENTS

See 1.0 FUTURE LAND USE for UCF's Land Use designations.

See 8.0 CAPITAL IMPROVEMENTS for Capital Projects projected in the 10-year planning interval.

GLOSSARY

For the purpose of this element, the following terms apply:

BOT - Board of Trustees

CDA - Campus Development Agreement

CMP - Campus Master Plan

MOU - Memorandum of Understanding

MRF - Materials Recovery Facility

PDC - Planning, Design and Construction

SSWB - Student Success and Well-being

UES - Utilities and Engineering Services

¹ STARS (Sustainability Tracking, Assessment, and Rating System) is “a transparent, self-reporting framework for colleges and universities to measure their sustainability performance.”

7.0 INTERGOVERNMENTAL COORDINATION

7.2 GOALS, OBJECTIVES, & POLICIES

NARRATIVE

The UCF Campus Master Plan directs the University’s physical growth and supporting infrastructure, and fosters compatibility with our surrounding host community, stewardship of resources, and ongoing coordination over the planning interval of the CMP (10 years). As such, the following goals, objectives, and policies provide the framework for managing intergovernmental coordination with our host- and affected- local, regional, state, and federal government partners.

GOAL 1: Achieve the goals, objectives, and policies of the UCF Campus Master Plan through the use and promotion of intergovernmental coordination with local, regional, state, and federal government entities.

OBJECTIVE 1.1: Promote land use compatibility between the University and the host local government through the coordination of the UCF Campus Master Plan with the comprehensive master plans of the host community.

POLICY 1.1.1: Proposed amendments to the Comprehensive Policy Plan of Orange County which have the effect(s) of changing land uses or policies that guide the development of land within the context area, affect the provision of local services, or otherwise impact University facilities or resources shall be submitted to the University Architect for review and comment.

POLICY 1.1.2: The University shall establish, in conjunction with Orange County, a process for reciprocal review of comprehensive plans.

POLICY 1.1.3: Proposed amendments to the adopted CMP which exceed the thresholds established in Chapter 1013.30(9), F.S., shall be transmitted to the host and affected local governments and other applicable governing bodies for review in accordance with the procedures established in Florida Statute 1013.30(6).

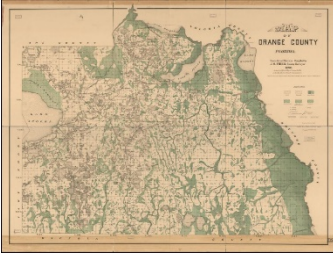
POLICY 1.1.4: Proposed amendments to the CMP which do not exceed the thresholds established in F.S. 1013.30(9), and which have the effect of changing the manner in which development on campus may occur or impacting off-campus facilities, services, or natural resources, shall be transmitted to the Orange County Planning Department for a courtesy review.

POLICY 1.1.5: The University shall meet with appropriate government entities, as needed, for review and comment on enrollment projections, and to review appropriate elements of local government comprehensive plans.

POLICY 1.1.6: Every effort shall be made to formalize the terms and conditions of the reciprocal plan review process through an inter-local agreement or memorandum of understanding.

7.0 INTERGOVERNMENTAL COORDINATION

OBJECTIVE 1.2: Establish administrative procedures and coordination mechanisms for the reciprocal review of campus and host community development plans.



POLICY 1.2.1: Whenever practical and reasonable, proposed development within the context area which has the potential to impact or affect University facilities or resources shall be submitted to FPC for review. The areas for review would include land use, transportation, utilities infrastructure, and conservation.

POLICY 1.2.2: Whenever practical and reasonable, the University Architect shall meet with appropriate officials of the Host Local Government to establish the criteria and thresholds for development proposals which would be subject to review by the University e.g., comprehensive plan amendments, rezoning, and special exceptions to context area properties. The construction or renovation of single-family homes and other small-scale developments shall be excluded from University review.

POLICY 1.2.3: Florida Statute 1013.30 (1), University Campus Master Plans and Campus Development Agreements supersedes the requirements of F.S. Title XI, Chapter 163, Part II Growth Policy; County and Municipal Planning; Land Development Regulation (ss. 163.2511-163.3253).

POLICY 1.2.4: University officials shall participate and cooperate with local officials in the review of proposed campus enrollment to assess potential impacts on local, regional, and state resources and facilities.

POLICY 1.2.5: Once the Campus Development Agreement (CDA) is executed, all campus development shall proceed without further review by the host local government if it is consistent with the adopted CMP and CDA.

POLICY 1.2.6: University officials shall participate and cooperate with local officials and representatives from appropriate regional and state agencies in the identification of appropriate strategies to mitigate the impacts of campus development on local, regional, and state resources, facilities, and natural resources.

(EN-6: Community Partnerships)

POLICY 1.2.7: University officials shall participate and cooperate with local officials in the review of proposed development within the Context Area to assess potential impacts on University resources and facilities.

POLICY 1.2.8: When it is determined that proposed enrollment on campus would have an adverse impact on local services, facilities, or natural resources, University officials shall partner with Orange County and other pertinent regional and state agencies in the identification of appropriate strategies to mitigate the impact consistent with the terms and conditions of the inter-local agreement.

(EN-6: Community Partnerships)

POLICY 1.2.9: UCF shall work with the Host Local Government to update the Memorandum of Understanding (MOU) between Orange County and UCF, dated August 3, 2010.

7.0 INTERGOVERNMENTAL COORDINATION

OBJECTIVE 1.3: Assess and mitigate the impacts of development on UCF, the host and affected local governments, the surrounding community, and service providers.

See Data & Analysis for more on this MOU.

POLICY 1.2.10: When it has been determined that proposed development within the designated Context Area would have an adverse impact on the University's facilities and resources, UCF officials shall partner with local, regional, or state officials to identify appropriate strategies to mitigate those impacts.

POLICY 1.2.11: Any dispute between the University and a host or affected local government regarding the assessment or mitigation of impacts shall be resolved in accordance with the process established in Florida Statute 1013.30 (8).

POLICY 1.3.1: As stated in F.S. 1013.30 (10), within 270 days after adoption of the UCF CMP, a draft Campus Development Agreement (CDA) shall be transmitted to appropriate host and affected local governments. This Agreement:

- (a) Must identify the geographic area of the campus and local government covered by the campus development agreement.
- (b) Must establish its duration, which must be at least 5 years and not more than 10 years.
- (c) Must address public facilities and services including roads, sanitary sewer, solid waste, drainage, potable water, parks and recreation, and public transportation.
- (d) Must identify, for each of the facilities and services listed in paragraph (c), the level-of-service standard established by the applicable local government; the entity that will provide the service to the campus; and describe any financial arrangements between the Board of Governors and other entities relating to the provision of the facility or service.
- (e) Must determine, for each of the facilities and services listed in paragraph (c), the impact of existing and proposed campus development reasonably expected over the term of the campus development agreement on each service or facility and any deficiencies in such service or facility which the proposed campus development will create or to which it will contribute.
- (f) May, if proposed by the University Board of Trustees (BOT), address the issues prescribed in paragraphs (d) and (e) with regard to additional facilities and services, including, but not limited to: electricity, non-potable water, law enforcement, fire and emergency rescue, gas, and telephone.
- (g) Must, to the extent it addresses issues addressed in the campus master plan and host local government comprehensive plan, be consistent with the adopted CMP and host local governments' comprehensive plans.

POLICY 1.3.2: UCF and the host government shall execute the CDA within 180 days after receipt of the draft agreement.

7.0 INTERGOVERNMENTAL COORDINATION

OBJECTIVE 1.4: Ensure intergovernmental coordination in the event of an emergency.

OBJECTIVE 1.5: Ensure the provision of adequate public services and facilities necessary to support development on campus and to meet the future needs of the University.

POLICY 1.3.3: All improvements to facilities or services which are deemed necessary to eliminate any identified deficiencies must be specifically listed in the CDA, and UCF's fair share of the cost of such improvements must be stated in the CDA per Florida Statute 1013.30(13). All of UCF's concurrency management responsibilities are fulfilled when UCF expends the total amount of funds specifically identified in the CDA.

POLICY 1.3.4: Any dispute between the University and host local government which arises from the implementation of the CDA shall be resolved in accordance with the process established in Florida Statute 1013.30 (16).

POLICY 1.4.1: The University shall work closely with the Orange and Seminole Counties' Offices of Emergency Management, the Sheriff's Departments, the American Red Cross, and other relevant organizations to develop standards and operating procedures to improve preparedness for emergency events.

POLICY 1.4.2: The University shall coordinate the use of campus resources for the staging of emergency services for an emergency event, when needed.

POLICY 1.4.3: The University shall participate in emergency exercises to evaluate management plans and procedures.

POLICY 1.5.1: The University shall coordinate the provision of adequate stormwater management facilities consistent with element 4.0 GENERAL INFRASTRUCTURE.

POLICY 1.5.2: The University shall coordinate the provision of adequate potable water facilities consistent with element 4.0 GENERAL INFRASTRUCTURE.

POLICY 1.5.3: The University shall coordinate the provision of adequate sanitary sewer facilities consistent with 4.0 GENERAL INFRASTRUCTURE.

POLICY 1.5.4: The University shall coordinate the provision of adequate solid waste collection facilities consistent with 4.0 GENERAL INFRASTRUCTURE.

POLICY 1.5.5: The University shall coordinate the provision of adequate electrical power and natural gas service consistent with 4.0 GENERAL INFRASTRUCTURE.

POLICY 1.5.6: The University shall coordinate with appropriate authorities, such as the Expressway Authority, for transportation system improvements consistent with elements 1.0 FUTURE LAND USE and 2.0 TRANSPORTATION.

POLICY 1.5.7: The University shall coordinate pedestrian and non-vehicular circulation improvements consistent with element 2.0 TRANSPORTATION.

POLICY 1.5.8: The University shall coordinate the provision of on- and off-campus housing consistent with element 3.0 HOUSING.

7.0 INTERGOVERNMENTAL COORDINATION

OBJECTIVE 1.6: Ensure that future campus development is consistent with regulations regarding historically- or archaeologically-significant resources.

OBJECTIVE 1.7: UCF will continue to maintain involvement with the immediate local community in an effort to position the University as a community resource, an intellectual hub, and a community asset.

Policy 1.6.1: The University shall coordinate the protection of environmentally-sensitive areas, species, and natural resources consistent with element 5.0 CONSERVATION.

Policy 1.6.2: The University shall coordinate the protection of historical and archaeologically-significant resources consistent with element 1.0 FUTURE LAND USE.

POLICY 1.7.1: Maintain, strengthen, and develop relationships within region, as well as with representatives of economic development, health care, and community and governmental agencies.

POLICY 1.7.2: Develop, coordinate, and foster partnerships encompassing internal University participants and external community participants promoting sustainable economic development initiatives and entrepreneurship.

(EN-6: Community Partnerships)

POLICY 1.7.3: Develop, plan, and coordinate opportunities designed to highlight the President of the University, his goals and his vision.

POLICY 1.7.4: Maintain and strengthen chamber of commerce relationships.

POLICY 1.7.5: Continue to develop and coordinate community initiatives focused on sustainable economic development, social issues, and service opportunities furthering integration within the community.

(EN-6: Community Partnerships)

POLICY 1.7.6: Continue to keep UCF's Neighbors apprised of UCF's development plans, by hosting meetings between Planning, Design and Construction (PDC), Neighbors, UCF departments, and Local Government representatives.

7.0 INTERGOVERNMENTAL COORDINATION

Blank Page

7.0 INTERGOVERNMENTAL COORDINATION

7.3 DATA & ANALYSIS

NARRATIVE

This element promotes proper communication and coordination between the University and affected state and local governments. Because of UCF’s rapid growth, increased development and infrastructure coordination with the host community and other governmental bodies will be vital to effectively meet future needs.

Inventory Agencies

BOG 21.210(a)

Inventory and assess the list of all host and affected local governments, and other units of local government providing services but not having regulatory authority over the use of land, independent special districts, water management districts, regional planning councils, and state agencies with which the university coordinates, or which provide services to the university.

- Host Local Government
- Affected Local Governments
- State Agencies

- Orange County
- Seminole County
- City of Orlando
- City of Oviedo
- Florida Department of Economic Opportunity (DEO is the “State Land Planning Agency”)
- Department of Environmental Protection (DEP)
- Florida Department of Transportation (FDOT)
- Department of State
- Fish and Wildlife Conservation Commission (FWC)
- St. Johns River Water Management District (SJRWMD)
- East Central Florida Regional Planning Council
- Seminole County Planning and Development Division

- Regional Agencies

This inventory shall also include regional or state agencies with land use or environmental regulatory authority, and authorities, independent special districts, and utility companies which provide services to the university.

- Utility Companies

- These Utility Companies provide services to the University
- Potable Water - St. Johns River Water Management District, Orange County Utilities
 - Primary Electrical Power - Duke Energy Florida
 - Natural Gas - TECO Peoples Gas
 - Reclaimed Water - Iron Bridge Water Pollution Control Facility
 - Solid Waste - Waste Pro®
 - Recycling hauled to Orange County MRF
 - Solid Waste hauled to Orange County Landfill
 - Stormwater - St. Johns River Water Management District
 - Wastewater Treatment - Iron Bridge Water Pollution Control Facility

7.0 INTERGOVERNMENTAL COORDINATION DATA & ANALYSIS

Coordination Mechanisms	
<p>BOG 21.210(b)</p> <p>Intergovernmental Coordination and Communication with the Host Local Government</p>	<p>Assessment of the existing coordination mechanisms in place for each governmental entity.</p> <p>On August 3, 2010, UCF and Orange County executed a 5-year Memorandum of Understanding (MOU):</p> <ul style="list-style-type: none"> • Orange County agreed to notify UCF of all public hearings for comprehensive plan amendments, rezoning, and special exceptions located within the Context Area. • UCF agreed to notify Orange County of amendments to the adopted Campus Master Plan. <p>This MOU has not expired due to a renewal clause; but needs to be revisited.</p>
<p>Intergovernmental Coordination and the UCF Campus Master Plan</p>	<p>As required by Statute and indicated in the Goals, Objectives, and Policies, UCF will continue to develop and implement its community outreach program with respect to the Campus Master Plan (CMP). The University presents the CMP at various phases throughout the update process at public hearings, informal information sessions, and neighborhood group meetings.</p> <p>Throughout the update process, coordination with local governments is essential to ensure that all input is considered prior to final adoption of the CMP.</p> <p>Per F.S 1013.30 (6) A copy of the draft master plan is sent for review or made available electronically to the host and any affected local governments, the state land planning agency (the DEO), the Department of Environmental Protection, the Department of Transportation, the Department of State, the Fish and Wildlife Conservation Commission, and the applicable water management district and regional planning council.</p>
<p>Intergovernmental Coordination and the Campus Development Agreement (CDA)</p>	<p>Per Florida Statutes 1013.30 (10), the University is required to enter into a CDA with local governments that addresses the impacts of University development on local government support infrastructure. Negotiation of the CDA occurs in conjunction with every five-year CMP update, and includes the identification of a process whereby the impacts of development are assessed.</p> <p>The primary purpose of the CDA is for UCF and local governments to identify areas of impact from University-generated development on the local infrastructure system, and to address mitigation for the University’s proportionate share of the impacts.</p> <p>The University works closely with local government representatives to ensure that CMP updates are consistent with the CDA, and with state and local comprehensive plans.</p>

7.0 INTERGOVERNMENTAL COORDINATION DATA & ANALYSIS

Intergovernmental Coordination and UCF Websites

- Planning Documents

The Planning, Design, and Construction (PDC) website is a critical tool that the University uses to communicate with state and local governments, the campus community, and the public. The University maintains a copy of the current Campus Master Plan Updates on the website, as required by Florida Statute 1013.30 (3). Past CMPs and Amendments are also posted on the website.

The following documents are located on the Planning, Design and Construction [Website](#), under the Planning tab:

- UCF Campus Master Plan (current and past)
- Campus Development Agreement (CDA)
- 5-year Capital Improvement Plans (CIP)
- UCF Campus Aerial Photos
- Other planning documents

Intergovernmental Coordination and Transportation

- Regional
Transportation
Planning

The University will continue to coordinate with affected state and local governments with regard to transportation issues resulting from University-generated development, including impacts on area and campus roadways, transit, parking, and bicycle/pedestrian facilities.

MetroPlan Orlando is a regional transportation planning body that leads transportation planning efforts in Orange, Osceola, and Seminole counties, and seeks to address the overall transportation challenges of the rapidly-growing metropolitan area which includes UCF.

UCF is a non-voting member of the MetroPlan Orlando Transportation Systems Management & Operations Advisory Committee (TSMO).

- Public Transit

The University participates with LYNX, the local area public transportation entity, and has developed the UCF/LYNX Transit Center², a multimodal center on Leo Lane between Garages A and I, to facilitate student, faculty, staff, and visitor use of public transit facilities.

- Railroads

The University will continue to coordinate with local governments looking to interconnect multiuse trail systems through and/or around campus.

Intergovernmental Coordination and General Infrastructure

UCF's General Infrastructure, subject to the State concurrency statute, is managed by Utilities and Engineering Services (UES).

Infrastructure includes stormwater management, potable water, sanitary sewer and treatment, and solid waste facilities, in accordance with State statute.

UES and UCFIT also manage UCF's chilled water, electrical power, natural gas, and telecommunications systems.

² The UCF/LYNX Transit Center is identified on Google Maps as the UCF SuperStop.

7.0 INTERGOVERNMENTAL COORDINATION DATA & ANALYSIS

- Stormwater Master Planning

The St. Johns River Water Management District (SJRWMD) approved the update to the UCF Campus Stormwater Master Plan in 2014, thus providing adequate, environmentally-sound stormwater management and capacity for current and future campus growth. The update significantly reduces University-generated offsite stormwater impacts on the surrounding community.

The University will continue to coordinate with state and local governments regarding development within the parameters of the approved Stormwater Master Plan. In addition, the University intends to sponsor public symposia addressing this issue with local stormwater officials and the public.

- Potable Water

In July of 2009, the University secured a secondary interlocal potable water supply agreement to provide the University with an emergency backup water supply of 145,453 gallons per day. Through coordination with Orange County, UCF provided an easement through its southern property for a new regional water service line.

The campus Consumptive Use Permit (CUP) was updated in June 2022 to allow draw of 385.1M gallons from the Upper Floridian Aquifer. It is integral that UCF partners with the Central Florida region host governments to focus on how to economically generate regional resources and alliances to deploy alternative water extraction methods, as ground water has become a precious and limited commodity. These additional treatment methods will drive purchased water commodity costs.

UCF is investigating construction of its own Water Treatment Plant.

- Wastewater / Reclaimed Water

On June 1999, UCF entered contract with Seminole County to receive wastewater (1MGD, with additional 0.8MGD available) and reclaimed water service (up to 2MGD). On September 2018, UCF purchased an additional 0.1MGD of wastewater capacity from Seminole County.

In addition, the University coordinated with the host government and upgraded its sanitary sewer infrastructure by sending its sanitary waste to the City of Orlando's Iron Bridge Water Pollution Control Facility (Iron Bridge) for processing and reuse.

As part of that agreement, the University receives treated effluent from Iron Bridge for irrigation and process water uses.

In a renewed agreement in June 2021 with Orange County Research and Development Authority, UCF provides up to 428,060 GPD of wastewater transportation capacity through campus to Iron Bridge by means of the university's agreement with Seminole County, as well as emergency potable water interconnection.

7.0 INTERGOVERNMENTAL COORDINATION DATA & ANALYSIS

Intergovernmental Coordination and Environmental Protection

- Environmental Protection
- Fire Protection

Intergovernmental Coordination and UCF's Fair Share

- 2016 and 2020 CDA

The cumulative growth of the University and its surrounding community has changed the area's character from semi-rural and suburban to an academic urban center.

Growth increases the need to coordinate environmental monitoring and conservation efforts. As a center of learning, UCF holds an important position in this partnership. As part of its mission, UCF shall provide critical knowledge and expertise, and demonstrate its commitment to beneficial growth management and concurrency.

The University partnered with Orange County, providing a tract of land in its northeast corner for the *Orange County / Seminole County Fire and Rescue Station 65*, which has served the University, and nearby neighborhoods, since 1999.

Inventory and assess all previous fair share payments made by the University to its host or affected local government as a result of existing Campus Development Agreement(s).

UCF paid its Fair Share of the "Alafaya Trail Pedestrian Safety Project" in collaboration with Orange County and the Florida Department of Transportation. UCF's fair share included:

- Donating an easement for a multimodal sidewalk
 - The easement UCF donated exceeded the originally agreed-upon acreage and value.
- Contributing to funding the installation of two (2) recommended mid-block crossings.
 - UCF paid the agreed NTE³ of \$517,000.
- Contributing to funding signalization changes at University Blvd and Alafaya Tr.
 - UCF paid the agreed NTE of \$100,000.
- Pedestrian Scale Lighting for the multimodal sidewalk.
 - UCF paid \$29,403 to Duke Energy, which was within the agreed NTE of \$75,000.
- Monthly rental to Duke Energy for maintenance and utilities for the Pedestrian lighting.
 - UCF signed the Duke Energy rental agreement, and is paying monthly costs to Duke Energy for added pedestrian fixtures on Alafaya Trail.

³ NTE – Not to exceed.