



6.0 RECREATION AND OPEN SPACE

Blank Page



6.0 RECREATION & OPEN SPACE

*2025-35 CAMPUS MASTER PLAN
UPDATE*

CONTENTS

- 6.1 INTRODUCTION 3
- 6.2 GOALS, OBJECTIVES & POLICIES 5
 - Recreation and Open Space - GOP 5
 - Intercollegiate Athletics - GOP 7
- 6.3 DATA & ANALYSIS 9
 - Recreation – Current and Future Facilities 11
 - Open Space – Current and Future Facilities 17
 - Intercollegiate Athletics – Current and Future Facilities 18
- 6.4 EXHIBITS 19

Blank Page

6.0 RECREATION & OPEN SPACE

6.1 INTRODUCTION

STATUTE & REGULATION



NARRATIVE

STRATEGIC PLAN ALIGNMENT

The RECREATION & OPEN SPACE element is required by Florida Statute 1013.30(3); and must follow the guidelines stated in Florida Board of Governors (BOG) Regulations, Chapter 21.

BOG 21.209 states the purpose of the RECREATION & OPEN SPACE element as follows:

“This element ensures the provision of adequate and accessible recreation facilities and open space to meet the future needs of the university.”

In the Future Land Use element, Recreation & Open Space has been divided into two Land Use Categories.

Recreation & Open Space – Developed

- Intercollegiate Athletics Facilities such as buildings, stadiums, courts, and fields
- Recreation Facilities such as buildings, courts, and fields
- Arboretum Park

Recreation & Open Space – Natural Preserve

- Lands that UCF voluntarily preserves, predominantly in their natural, scenic, open, or wooded condition; e.g. Arboretum Preserve, Northwest Parcel, President’s Reserve, and Neighborhood Buffers.
- Not included are lands, such as Jurisdictional Wetlands and Conservation Easements, for which UCF has granted a right or interest to other entities to conserve.

This element aligns with one or more of the four priorities stated in the UCF strategic plan “*UNLEASHING POTENTIAL – Becoming the University for the Future*”, specifically:

Student Success and Well Being

Adequate and accessible recreation and open space aligns with this priority as the provision of recreation and open space allows for the expansion of access to high-impact practices and student well-being programs that contribute directly to success. Campus Recreation programs and facilities significantly impact student retention, with consistent use observed to correlate with retention rates above university goals.

Discovery and Exploration

The provision of activity laboratory space within the Colleges of Community Innovation and Education (CCIE) and Health Professions and Sciences (CHPS), as well as the use of the Arboretum and its natural environment by the Department of Biology, allows for investment in health and human performance that will address prevailing workforce needs in the healthcare sector.

6.0 RECREATION & OPEN SPACE

SUSTAINABILITY

Community and Culture

The Strategic Plan aspires to expand university and community investment in the UCF Athletics Association's Mission XII initiative. Establishing lifelong connections with our community through athletic and alumni engagement activities is supported by growth plans in this element.

Goals, Objectives and Policies that align with the Sustainability Tracking, Assessment & Rating System™ (STARS)¹ are shown in **green** text, with the specific *Category and Impact Area* and *Credit #* indicated in parentheses after the Goal, Objective, or Policy.

Specific STARS sections in this element are aligned with the Category and Impact Area, **Engagement (EN)**, and credit:

- **EN 8: Shared Facilities**

RELATED ELEMENTS

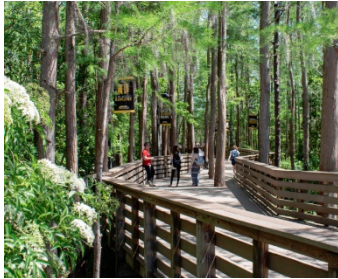
1.0 FUTURE LAND USE, Future Land Use Map - for information on campus areas designated for Recreation & Open Space.

2.0 TRANSPORTATION - for additional information on parking.

5.0 CONSERVATION - for additional information on open space.

8.0 CAPITAL IMPROVEMENTS - for recreation and athletics capital projects projected for the planning timeframe.

DEFINITIONS



Activity-based facilities are defined as those facilities designed, constructed, and designated for specific sports or recreation activities, including:

- Indoor and outdoor recreation facilities. e.g. intercollegiate and intramural sports facilities (softball, soccer, tennis, etc.), gymnasias.

Resource-based refers to those facilities that are primarily used for general recreation or organized social functions, including:

- Open fields, picnic areas, nature trails, boating lakes, and public parks. This category may also include on-campus man-made features (malls, courtyards, plazas, quadrangles, parks) where students, faculty, and staff gather for casual interaction or play.

Resource-based facilities are further categorized as:

- **Active Resource-Based Facilities** - generally accessible open spaces or parks where recreation activities are permitted, such as picnic areas, open fields, nature trails.
- **Passive Resource-Based Facilities** - areas that are relatively inaccessible to any type of recreation activity, such as conservation and environmental mitigation lands.

¹ STARS (Sustainability Tracking, Assessment, and Rating System) is “a transparent, self-reporting framework for colleges and universities to measure their sustainability performance.”

6.0 RECREATION & OPEN SPACE

6.2 GOALS, OBJECTIVES & POLICIES

Recreation and Open Space - GOP

NARRATIVE

Goals, Objectives & Policies (GOP) are stated here for “Activity-Based Recreation” and “Resource-Based Recreation” as defined in 6.1 Introduction.

GOAL 1: Provide a variety of safe, efficient, and enjoyable on-campus recreation facilities and open space areas to promote the health, well-being, and campus aesthetic for students, faculty, staff, and visitors.

OBJECTIVE 1.1: Pursue a variety of public and private funding sources and programs to ensure the development and availability of recreational facilities and educational laboratories for students and other user groups.

POLICY 1.1.1: Student Success and Well-being (SSWB) and the College of Community Innovation and Education (CCIE) shall assure the provision of adequate recreation and open space facilities to support quality recreational and sports programs for all UCF students.

The development of programs and facilities will be based upon student demand, user interest, and the availability of appropriate funds.

POLICY 1.1.2: Landscape & Natural Resources (LNR)² and the Arboretum shall be responsible for the creation and maintenance of all trails and trail systems in the campus natural lands.

The University will encourage the campus and surrounding communities to use UCF’s natural lands as an outdoor living laboratory and recreational space, to enhance physical and mental well-being.

(EN-8: Shared Facilities)

POLICY 1.1.3: The Arboretum will evaluate funding opportunities for the development of Arboretum Park (the Arboretum site within the Campus Core) as a park-like setting offering recreational opportunities for students, faculty, staff and the Local Community.

(EN-8: Shared Facilities)

POLICY 1.1.4: The University shall continue to utilize contractual relationships with off-campus, private, and public facility providers to meet recreation or physical program and facility needs.

² LNR includes both the Arboretum & Sustainability group and Landscape Operations.

6.0 RECREATION & OPEN SPACE

OBJECTIVE 1.2: Pursue a variety of continuing in-house planning and facility development programs to ensure that high quality recreation and open space areas are adequately and efficiently provided.



OBJECTIVE 1.3: Promote unrestricted or managed public access to all campus recreation and open space areas to the maximum extent feasible.

POLICY 1.2.1: UCF shall continue to maintain and develop functional and aesthetically pleasing open spaces between structures and throughout the campus. This shall be accomplished through the application of building development and land use intensity guidelines consistent with elements 1.0 FUTURE LAND USE and 5.0 CONSERVATION.

POLICY 1.2.2: Although separate facilities would be ideal for Recreation, Intercollegiate Athletics, and Sports Education programs, representatives of these programs shall share facilities when practicable.

POLICY 1.2.3: UCF shall continue to develop future recreation facilities. Once all remaining sites in RWC Park have been developed, additional campus sites must be explored.

POLICY 1.2.4: When designing and programming future campus development of open spaces, Student Success and Well-Being (SSWB), and the College of Community Innovation and Education (CCIE) and Planning, Design & Construction (PDC) shall consider which recreation programs and facilities could be maintained in these spaces as part of the campus open space scheme.

POLICY 1.2.5: The University shall continue to identify priorities for improvements to recreation and open space facilities to correct existing deficiencies and meet future demands.

- Capital Projects proposed within the planning period shall be indicated in the Schedule of Capital Projects (SCP), found in element 8.0 CAPITAL IMPROVEMENTS

POLICY 1.3.1: Campus open space areas shall be developed and maintained as areas of unrestricted public access, wherever feasible.

(EN-8: Shared Facilities)

- “Trails and associated facilities should be designed or retrofitted so that accessibility is a key tenet”;³ even when absolute access is not feasible.
- UCF may restrict or limit access to certain areas of environmentally sensitive habitat, as necessary to protect endangered animal and plant species.

POLICY 1.3.2: The University shall prioritize use of campus recreational facilities for UCF students, faculty, and staff. Once student demands are met, faculty, staff, and non-campus users will be accommodated, on a fee basis.

- Reasonable maintenance and restoration periods for any recreational facility will take precedence over access.

³ Source: Florida Greenways and Trails Council's "[Unpaved Non-Motorized Trail Guidelines](#)")

6.0 RECREATION & OPEN SPACE

OBJECTIVE 1.4: Protect and enhance present campus open spaces.

POLICY 1.4.1: The University shall protect all existing conservation lands and maximize the retention of open space; by judicious placement of future buildings, parking facilities, infrastructure, and other man-made improvements.

- See also 1.0 FUTURE LAND USE, 5.0 CONSERVATION, and 8.0 CAPITAL IMPROVEMENTS.

Areas indicated on the Future Land Use Map as category “Recreation & Open Space” cannot be changed without an amendment to the CMP.

POLICY 1.4.2: The University shall select sites for buildings and infrastructure that ensures the retention of campus open space, when feasible.

POLICY 1.4.3: The University shall strive to create new, park-like greenspaces between buildings, where shown on the Future Land Use Map, and the Capital Improvements Map.

Intercollegiate Athletics - GOP

NARRATIVE



MISSION: To positively transform the lives of our students academically, athletically, and personally through a nationally competitive intercollegiate athletics program that enhances the reputation and visibility of the University of Central Florida.

VISION: To be Florida’s preeminent intercollegiate athletics program, representing UCF and our community with distinction on the national stage as *“Orlando’s Hometown Team.”*

GOAL 1: Continue developing UCF’s athletics facilities to align with the UCF Mission XII initiative.

OBJECTIVE 1.1: Design and implement a world-class athletics master facilities development plan.

POLICY 1.1.1: The UCF Athletics Association (UCFAA), in consultation with Planning, Design and Construction (PDC), will review and assess athletics facilities needs and prioritize future construction, enhancements, and expansion projects.

POLICY 1.1.2: UCFAA facilities, projected for the 10-year planning timeframe, shall be listed on the Schedule of Capital Improvements (SCP) in element 8.0 CAPITAL IMPROVEMENTS.

POLICY 1.1.3: UCFAA shall establish the priority use of intercollegiate athletics facilities.

POLICY 1.1.4: UCFAA will seek external creative assistance with conceptualizing capital projects and facilities enhancements to obtain donor support for the facilities development campaign.

POLICY 1.1.5: UCFAA will establish an annual facilities maintenance and reinvestment budget for new capital projects and existing facilities.

6.0 RECREATION & OPEN SPACE

Blank Page

6.0 RECREATION & OPEN SPACE

6.3 DATA & ANALYSIS

Recreation & Open Space Facilities Inventory

Data and Analysis Requirements.

- University-owned or -Managed Recreational Sites

Privately-owned, State-owned, or Local Government-owned Recreational Facilities and Open Spaces

BOG Regulation 21.209 (1) Inventory and assess (the following) against the projected needs for recreation and open space facilities required to meet the needs of the projected university population (students, faculty and staff) based on university standards and calculations or established level of service standards.

- (a) university-owned or -managed recreational sites (including open spaces, incidental recreation facilities, parks, lakes, forests, reservations, freshwater and saltwater beaches)
- (b) privately-owned, state owned, or local government-owned recreational facilities and open spaces within the planning study area
- (c) planned future recreation and open space facilities, both on-campus and off-campus within the planning study area

See Exhibit 6.4-1 for an Inventory of all existing athletics, recreation and open space facilities that are UCF-owned and -managed, along with their sizes and typical uses.

University owned and managed facilities are used primarily for:

- Academic classes within the College of Community Innovation and Education (CCIE) and College of Health Professions and Sciences (CHPS)
- Recreation and Wellness Center (RWC) programs including Fitness, Aquatics, Outdoor Adventure, Intramural Sports, and Sport Clubs
- Intercollegiate Athletics programs sponsored by the UCF Athletics Association (UCFAA)
- On-campus residential recreation
- Outdoor, nature based, active recreational programming and activities supported by the Natural Resources and Arboretum departments.

UCF facilities are periodically available for rent and/or open to public use as noted in the "Typical Uses" column in Exhibit 6.4-1.

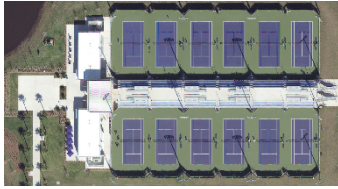
Existing privately-, state-, or local government-owned sports facilities, recreation facilities, and open space are available within and near the Context Area.

UCFAA, Education, and Sport Clubs utilize Non-University Owned/Managed facilities for Golf, Tennis, and Bowling.

Bowling:

Local bowling lanes are used for events, academic classes and by Sport Clubs. These facilities are privately-owned and -managed, and are used on a fee basis.

6.0 RECREATION & OPEN SPACE



Level-Of-Service Standard (LOS)

Recreational Sports Planning Guidelines

Peer Comparisons

Golf:

UCFAA uses the Intercollegiate Golf Training Facility at Twin Rivers Golf Club for intercollegiate men’s and women’s golf training. The facility is owned and managed by the City of Oviedo.

Several local par 72, 18-hole golf courses are used by education classes; and UCF entities pay a use fee.

Tennis:

For intercollegiate men’s and women’s tennis training and competition, UCF uses the Collegiate Center at the U.S Tennis Association (USTA) National Campus in Lake Nona (12 courts, clubhouse, and stadium).

Hiking, Canoeing, Kayaking, Cycling, Birding, etc.:

State Parks and Natural Areas: There are many off campus Resource-Based facilities that are used by academic programs and RWC adventure trips, and even more that are open and accessible to the public.

UCF has an abundance of Resource-Based active and passive recreation space, as defined in 6.1 Introduction.

A review of Activity-Based recreation space, such as intramural fields and courts, illustrates a deficit of space to serve the needs of the UCF community. The following comparisons to other institutions and to recognized space-planning guidelines further illuminate the need for additional Activity-Based recreation space.

Several projects specific to the UCF Recreation and Wellness Center have been undertaken to address this deficit; but more indoor and outdoor recreation spaces are needed.

Based on a review of the National Intramural Recreational Sports Association’s (NIRSA) “Space Planning Guidelines for Campus Recreational Sport Facilities,” the following LOS standards are presented for comparison purposes.

Recreation Facility Type	National Standard per 1,000 students
Playing Field Space	0.94 acres
Indoor Recreation Space	8,960 SF

Based on total enrollment,⁴ the following is an assessment of UCF against peer institutions of similar size, as well as against other state universities.

Based on the NIRSA standard of 8,960 square feet per 1,000 students, a school of UCF’s size should have 621,107 total square feet of indoor recreation space.

The figures below demonstrate UCF’s comparative lack of Indoor Recreation Space and Outdoor Playing Field Space.

⁴ Comparable data was unavailable to support a comparison of other Universities Main Campuses to UCF’s Main Campus only.

6.0 RECREATION & OPEN SPACE

Comparison Indoor Recreation Space

Peer Institutions and other State Universities	Fall 2023 Enrollment	Indoor Space (SF)	Indoor Space SF/Student
The Ohio State University	65,405	725,000	11.08
University of Texas Austin	53,082	500,000	9.41
Texas A&M	69,598	540,000	7.75
University of South Florida	48,732	220,961	4.53
Florida State University	43,701	180,000	4.11
University of Florida	54,992	201,581	3.60
UCF	69,316	150,000	2.16

Comparison Outdoor Playing Field Space

Peer Institutions and other State Universities	Fall 2023 Enrollment	Field Space (acres)	Acres/1,000 students
Florida State University	43,701	117.00	2.68
The Ohio State University	65,405	54.98	0.84
Texas A&M	69,598	50.00	0.71
University of Texas Austin	53,082	35.67	0.67
University of Florida	54,992	35.00	0.63
University of South Florida	48,732	22.75	0.46
UCF	69,316	24.85	0.35

Recreation – Current and Future Facilities

Analysis and Recommendations for Improvement



UCF routinely investigates opportunities to provide Recreation and Open space Facilities to address future demand, in addition to any facilities issues or limitations.

As indicated by the Level of Service (LOS) standards set by the National Intramural-Recreational Sports Association (NIRSA), UCF currently has a lower existing LOS for recreation space than the NIRSA LOS standards or by comparison to other universities with similar enrollment.

In addition to the LOS standard from NIRSA, it is important to consider current NIRSA Facilities and Construction Reports such as “*Facility Construction & Renovation at NIRSA Member Institutions, 2016-2020*,” and other publications such as “*Physical Space on Campus*” from the ACUI 2012 Summit on Building Community, and *Recreation Planning Principles*, outlined by the NIRSA and Society for College and University Planning (SCUP) through a joint effort, that include:

- Establish recreation as a pillar of the University’s comprehensive plan
- Create and maintain a vision of physical development of recreational facilities, a vision which supports the mission and master plan
- Instill a real sense of community and enrich the experience of all who come to campus; and
- Foster a safe, secure, and accessible environment

6.0 RECREATION & OPEN SPACE

RECOMMENDATIONS FOR IMPROVEMENTS

Based on student satisfaction surveys, observation, and data published by NIRSA, RWC has identified a list of problems, constraints, and opportunities were. They are not in priority order.

The UCF Recreation and Wellness Center Vision states: "(RWC) strives to both set and stay ahead of national standards for university recreation programs and facilities..."

Future Resource-Based recreation and open space must be carefully planned, utilizing spaces formed between buildings and the protection and expansion of natural areas.

As the campus continues to grow, more land will be needed for Activity-based recreation facilities, buildings, and parking.

INDOOR FACILITIES

The Recreation and Wellness Center (RWC)



The Recreation and Wellness Center helps to serve the recreation needs of the UCF community. The 85,000 square foot facility was opened in 2002 and expanded in 2010 to add 65,000 square feet, including more fitness area, multipurpose courts, racquetball courts, a new lap pool, and an outdoor adventure center. These additions have been successful, but still leave UCF with inadequate square footage compared to peer institutions and national standards.

Recreation and Wellness Center amenities:

- Track (1/8 mile)
- Multipurpose Courts (6)
- Racquetball Courts (4)
- Fitness Space
 - Free Weight Area
 - Machine Weight Area
 - Cardio Equipment Area
 - Functional Fitness Area
- Outdoor Adventure Center
- Climbing Tower
- Leisure Pool (186,000 gallon)
- Lap Pool (9-lane regulation)
- Tennis Courts (8)
- Pickleball Courts (4)
- Sand Volleyball Courts (4)
- Outdoor basketball courts (3)

RECOMMENDED IMPROVEMENTS TO INDOOR FACILITIES

Addition to the Recreation and Wellness Center - the intent is for the current site, south and west of the existing facility, to be built out to serve the needs of the UCF community (see 8.0 CAPITAL IMPROVEMENTS, Schedule of Capital Projects and Capital Improvements Map).

6.0 RECREATION & OPEN SPACE

	<ul style="list-style-type: none"> • A master plan exercise in 2007 indicated that the RWC facility could be expanded to include additional court space, multipurpose rooms, fitness space, and an expansion to the outdoor adventure center. • A Project to update HVAC in the RWC is CITF funded for 2025 – see 8.0 CAPITAL IMPROVEMENTS, Schedule of Capital Improvements.
<p>UCF loss of Indoor Facilities</p> <ul style="list-style-type: none"> • RWC @ Knights Plaza • RWC @ Ferrell Commons • Tennis Complex 	<p>During previous planning intervals RWC has closed facilities, not increased them as was needed. Dedicated indoor Sport Club space should be included in any future expansion of the Recreation and Wellness Center.</p> <p>The addition of RWC’s Knights Plaza facility in 2013 had greatly improved the indoor facility inventory, however the facility closed in 2023 due to a lack of available Activity and Service Fee funding to sustain the operation of the leased facility.</p> <p>The Ferrell Commons facility was renovated in 2015 to provide a dedicated space for Sport Club martial arts clubs to practice. The renovation decreased the overall space available for Sport Clubs, as the facility was divided to accommodate the Lead Scholars Academy.</p> <p>RWC sacrificed one tennis court to make space for pickleball.</p>
<p>OUTDOOR FACILITIES</p>	
<p>Lake Claire Recreation Area</p>	<p>The William E. and Mary Jo Davis Recreation Area on Lake Claire has become a thriving natural recreation facility on campus, with a highly visible location on the northwest corner of campus on Gemini Boulevard North near Greek Park.</p> <p>Lake Claire Recreation Area amenities:</p> <ul style="list-style-type: none"> ○ Boat House ○ Picnic Pavilions (3) ○ Sand Volleyball Courts (2) ○ Playing Field ○ Outdoor Fitness Stations <p>The Lake Claire facility was last redeveloped in 2012 to include picnic pavilions (3), sand volleyball courts (2), and a lighted playing field. Exercise stations and an ADA accessible dock and restroom have also been added to enhance the facility.</p>
<p>RECOMMENDED IMPROVEMENTS</p>	<p>Aside from physical enhancements to Lake Claire, the space should also host only activities which are consistent with its natural environment, in order to preserve and protect the facility for its primary usage.</p> <p>Once a popular tailgating site, Lake Claire Recreation Area no longer permits tailgating due to behavioral incidents, safety concerns, and damage to the facilities and site.</p>

6.0 RECREATION & OPEN SPACE

• Boathouse	<p>A total renovation of the boathouse is needed to create a facility that is both fitting to the area’s aesthetics and allows its staff to serve students more efficiently.</p> <p>The current boat house is a covered, outdoor chain-link facility that is not sufficiently large or secure to meet the demand of the UCF community. An updated boathouse design was proposed in a 2010 Lake Claire Recreation Area Master Plan.</p>
• Parking lot	<p>The parking lot (H10) at Lake Claire is gravel and dirt. An upgrade to pavement with parking space striping would improve the user experience. See element 2.0 TRANSPORTATION for information on proposed improvements to campus parking lots.</p>
• Trail system	<p>There are under-maintained trails through the woods behind Lake Claire. If feasible, the trails should be improved, maintained, and connected with current on-campus trails.</p>
RWC Park	<p>The RWC Park encompasses all the outdoor playing field facilities in a park-like environment on the south side of campus. The Park was master planned to include state-of-the-art artificial turf fields and support facilities.</p>
	<p>The Rec and Wellness Park has these amenities:</p> <ul style="list-style-type: none">○ Artificial Turf Fields (6)○ Sport Club Field○ North Grass Field○ Softball Field○ Challenge Course○ Disc Golf Course○ Outdoor Fitness Gym
• Past Improvements	<ul style="list-style-type: none">• The first phase of the redevelopment of the park was completed in 2006 and added three (3) lighted artificial turf fields to the existing softball fields, sport club fields, and multipurpose fields.• Phase II construction was completed in 2009, and added three (3) additional lighted turf fields, a support and restroom facility (building 320), and a maintenance facility (building 321).• The first phase turf fields were re-turfed in 2016, including a repair of the drainage and base layer. The phase II turf fields were re-turfed in 2023. It is recommended that the fields continue to be re-turfed every 10-12 years based on wear.
RECOMMENDED IMPROVEMENTS	<p>Future phases of RWC Park must address the shortfall of baseball/softball fields, the addition of lighted fields dedicated to Sport Clubs, dedicated pedestrian paths and a support facility for safety, security, and access.</p> <p>The RWC Park Master plan should complete all future phases to support student usage. This would include:</p>

6.0 RECREATION & OPEN SPACE

- RWC Sport Fields

- Add artificial turf fields 7 & 8 should replace current grass fields. This would add two additional lighted fields for Intramural Sports, Sport Clubs and open recreation.

- RWC Buildings

- Add Varsity Sport Club grass field 1, to the south of the current Sport Club field. This would add one lighted competition field for Rugby, Soccer and Ultimate.

- Add a new Support Facility to provide additional security and access management. This building would also provide a severe weather shelter for users, along with additional restrooms and indoor programming space.

- RWC Softball Fields

UCF currently has a critical shortage of softball fields. In 2000, the expansion of University Housing decreased the quantity from three (3) to one (1) field. NIRSA standards call for 0.15 fields per 1000 students or 9.9 fields. While Intramural Sports participation these sports has declined in recent years, the UCF Baseball and Softball club currently must rent off-campus fields for competitions.

- Construct one (1) Baseball/Softball multipurpose field adjacent to the current softball field.

- RWC Transportation Infrastructure

RWC Park is a vibrant, well-lit activity space, frequently used in the evenings and on weekends. The supporting transportation infrastructure needs improvement.

- Parking: RWC Park lacks dedicated parking. Lot B8 provides only 120 spaces, shared by RWC Park and UCF Marching Band.
- Sidewalks: Lot B8 has no dedicated pedestrian paths around or through the lot. Students need a safe way to walk, run or bike to the RWC Park.
- Road Improvements: An existing east-west service road, utilized by vehicles that support Marching Band and UCF Facilities, poses a pedestrian safety issue for RWC Park.

- RWC Challenge Course



RWC Park includes a Challenge Course with high and low ropes elements for team development and leadership training. Based on recent inspections, the Challenge Course will likely reach the end of its operational lifespan during the CMP planning interval.

- UCF should prioritize renovating and replacing the course prior to the end of its lifespan.
- Future phases should include additional high and low elements to provide new programs and accommodate larger groups.
- The open space around the Challenge Course must be preserved, as the facility is intended to be secluded in a natural area and encroachment on its buffer would lessen its appeal and effectiveness.

6.0 RECREATION & OPEN SPACE

- RWC Tennis

The Tennis complex has eight (8) lighted courts west of Libra Garage, shared by the entire UCF community, including UCF Athletics.

UCF has a deficit of intramural tennis courts. The NIRSA standard of 0.41 Tennis Courts per 1,000 students suggests UCF needs 27 courts (deficit of 19 courts).

- Additional tennis courts should be provided to serve the UCF community. UCF Athletics is planning the addition of 12 intercollegiate tennis courts near the softball complex. This facility will relieve a great deal of strain on the intramural tennis complex.

- RWC Sand Volleyball

Existing Sand Volleyball facilities: Six (6) courts – four (4) southwest of Tennis complex and two (2) at Lake Claire

- RWC is considering relocating the Sand Volleyball courts from the Tennis Complex to RWC park to alleviate surface maintenance concerns with sand courts located next to hard courts.

- RWC Pickleball



Existing Pickleball facilities: Four (4) pickleball courts, at the Tennis Complex, open to the UCF community. In 2024, the RWC converted a tennis court into four (4) pickleball courts. The remaining eight (8) courts are now available strictly for tennis.

- RWC should monitor the popularity and use of these pickleball courts; and consider adding additional courts should funding allow.
- Relocating the Sand Volleyball courts from the Tennis Complex to RWC park, would allow for more pickleball courts.

- RWC Disc Golf

Existing Disc Golf facility: 18-hole Disc Golf course, west of RWC Park. In 2021, the RWC expanded the Disc Golf Course from 9- to 18-holes. This course is open to the UCF and Local communities and should continue to be maintained at a high level.

- No current recommendations

- RWC Basketball

Existing facilities: Three (3) Basketball courts, off of Ursa Minor St, also open to UCF students and RWC Members.

- No current recommendations

6.0 RECREATION & OPEN SPACE

Open Space – Current and Future Facilities

INVENTORY

Open Space, as defined in the element 6.1 Introduction, includes nearly 800 acres of spectacular natural lands and on-campus man-made features.

Active Resource-Based Facilities (natural and man-made):

- Memory Mall
- Burnett Honors College formal garden
- Health Sciences I and II courtyard
- Knights Plaza
- Arboretum Park (within the Campus Core)
 - Current Environmental Education and Outreach Center
- Arboretum Preserve (east of Gemini Blvd. E.)
 - Timothy Newman Nature Pavilion
- [Campus nature trails](#)
 - Arboretum Nature Trails
 - Lake Claire Nature Trails
 - East Parcel Nature Trails

Passive Resource-Based Facilities

- Conservation Easements
- Jurisdictional Wetlands

RECOMMENDED IMPROVEMENTS

UCF's Open Space needs improvements. See also 5.0 CONSERVATION element.

- Proposed improvements to Lake Claire Recreation Area are indicated under Recreation Facilities.
- The Arboretum and Sustainably Department plans to:
 - Replace the aging, modular *Environmental Education and Outreach Center* with a new *Arboretum and Sustainability Center* (see 8.0 CAPITAL IMPROVEMENTS)
 - Improve Arboretum Park to enhance its purpose as a living laboratory.
- Provide future open spaces at the current sites of some large surface parking lots. Examples from 1.0 FUTURE LAND USE, Future Land Use Map:
 - North of Trevor Colbourn Hall (Lot H2)
 - East of Health Sciences II (Lot D1)

6.0 RECREATION & OPEN SPACE

Intercollegiate Athletics – Current and Future Facilities

NARRATIVE

UCF Athletics is committed to making the Kenneth G. Dixon Athletics Village the best of its kind in collegiate athletics.

See 6.4 EXHIBITS regarding current University-owned and -managed Athletics Facilities.

Planning Objective

On a continual basis, UCFAA reviews and assesses athletics facility needs and prioritizes future construction, enhancements, and expansion projects.

Priorities

- Student-athlete competition, training, nutrition, academic, and personal/career development
- Fan experience
- Revenue development
- Administration and support

RECOMMENDED IMPROVEMENTS

Significant expansion is anticipated during the 2025-35 planning interval, as funding becomes available.

The following projects, projected for the 10-year planning timeframe, are listed and mapped in 8.0 CAPITAL IMPROVEMENTS - Exhibits.

- Roth Tower Addition/Remodeling/Renovation
- Relocation of Football Practice Field
- Parking and Promenade Improvements
- Remodeling/Renovation Wayne Densch Sports Center
- New Football Operations Building
- New McNamara Cove
- New Soccer Stadium & Field
- New Track Stadium & Track
- New Tennis Complex
- Basketball Excellence Center - The Venue
- Spectrum Stadium Steel Re-coating

6.0 RECREATION & OPEN SPACE

6.4 EXHIBITS

Exhibit 6.4-1 Existing Recreation and Athletics Facilities

Exhibit 6.4-2 Recreation and Wellness Current Facilities Inventory Map

Exhibit 6.4-3 UCFAA Current Facilities Inventory Map

Exhibit 6.4-1 Existing Recreation and Athletics Facilities

On-Campus Athletics Facilities

University-owned and University-managed

Facilities used primarily by Intercollegiate Athletics - "Keys" refer facilities shown on UCFAA Current Facilities Inventory Map

Key	Description	Size	Typical Uses
A	Addition Financial Arena (2007)	370,773 GSF	Men's and Women's Intercollegiate Basketball training and competition, commencement, and special events. Managed by UCF Convocation Corp
B	The Venue (1991)	Incl above	Intercollegiate Women's Volleyball training and competition, and Special Events. Managed by UCF Convocation Corporation
C	John Euliano Park (2001)	4.7 acres	Intercollegiate Baseball (Spring home games). Youth Camps
D	Soccer Practice Field (2006)	2.37 acres	Intercollegiate Men's and Women's Soccer training
E	Track and Soccer Complex (1991, Stadium added 2010)	6.85 acres	Intercollegiate Women's Track, Men's Soccer, and Women's Soccer training and competition. Limited University community use
F	Nicholson Field House (2005)	81,337 GSF	Indoor conditioned training. Regulation football field
G	Roth Athletics Center	45,791 GSF	Administrative offices, Sport program offices, Team facilities
H	Wayne Densch Sports Center (2004)	GSF	Student-Athlete Training Facility, Football Staff Offices, Sports Medicine, Strength and Conditioning, Equipment Operations
I	Football Practice Fields two fields (2006, one moved 2024)	4.57 acres	Fall/Spring Practice, and Youth Camps
J	FBC Mortgage Stadium (2007)	10.12 acres	Intercollegiate Football games (Fall), and Special Events
K	Roth Tower	See Stadium	Part of FBC Stadium
L	Wayne Densch Center for Student-Athlete Leadership (2016)	45,330 GSF	Student-Athlete dining and nutrition, and Special Events
M	Garvy Center for Student-Athlete Nutrition (2018)	See Stadium	Student-Athlete dining and nutrition, and Special events
N	Softball Complex (2006)	1.65 acres	Fall/Spring Practice, Home Games, and Youth Camps
~	Tennis Courts - see <i>Shared On-Campus Facilities</i>	~	

Off-Campus Athletics Facilities

Facilities used primarily by Intercollegiate Athletics

Description	Size	Typical Uses
UCF Evans Family Rowing Center (Lake Pickett)	5.0 acres	Varsity Fall/Spring Home Games, Practices, Youth Camps

On-Campus Recreation Facilities

Facilities used primarily for Recreation - "Codes" refer facilities shown on RWC Current Facilities Inventory Map

Code	Description	Size	Typical Uses
1	Recreation and Wellness Center (RWC)	156,111 GSF	Recreation Use for Students and Faculty/Staff.
• 1.1	• RWC Lap Pool	0.23 acres	Recreation Use for Students and Faculty/Staff
• 1.2	• RWC Leisure Pool	2.06 acres	Recreation Use for Students and Faculty/Staff
2	William E. and Mary Jo Davis Lake Claire Recreation Area	4.2 acres	Boat house, Rec. facilities, etc. may be reserved by the UCF Community. Lake Claire, itself, is available to the public.
3	RWC Park (Fields & Support Facilities)	14.81 acres	Intramural Leagues, Sport Club Practices and Games, Rentals
• 3.1	• RWC Park Sport Club Field	3.87 acres	Sport Club Practice and Games
• 3.2	• RWC Park Softball Field	2.02 acres	Recreation Use and Intramural Tournaments
• 3.3	• RWC Park North Grass Field	4.15 acres	Reservations, Sport Clubs Games and Practices
4	Challenge Course	4.52 acres	UCF Community reservations
5	Outdoor Basketball Courts (3 lighted)	0.43 acres	UCF Community reservations
6	Sand Volleyball Courts (4 lighted)	0.35 acres	Campus Recreation Use, Intramural tournaments
7	RWC @ Ferrell Commons (part of Bldg. 7-E)	14,058 GSF	Sport Club Practices, Academic Martial Arts classes

On-Campus Shared Facilities

Facilities shared by UCFAA, CCIE, CHPS, and Recreation & Wellness

Code	Description	Size	Typical Uses
8	Tennis and Pickleball Courts (8 Tennis / 4 Pickleball, lighted)	1.62 acres	Varsity Practice, Intramurals, Campus Recreation, Youth Tennis Camp, Tennis Club. Pickleball available to UCF Community.
9	Disc Golf	37.15 acres	UCF Community Use
10	Band Field	1.79 acres	UCF Marching Knights and Campus Recreation Use
11	Education Complex (ED)	110,272 GSF	Sport Clubs, Academic Classes, UCFAA Practice
• 11.1	• Gymnasium (ED 176)	(12,907 asf)	Academic Classes
• 11.2	• Multipurpose (ED 174)	(2,769 asf)	Physiology of Work & Exercise Response (POWER) Lab
• 11.3	• Wellness Research Center (ED 179)	(2,427 asf)	Kinesiology Lab

Open Space

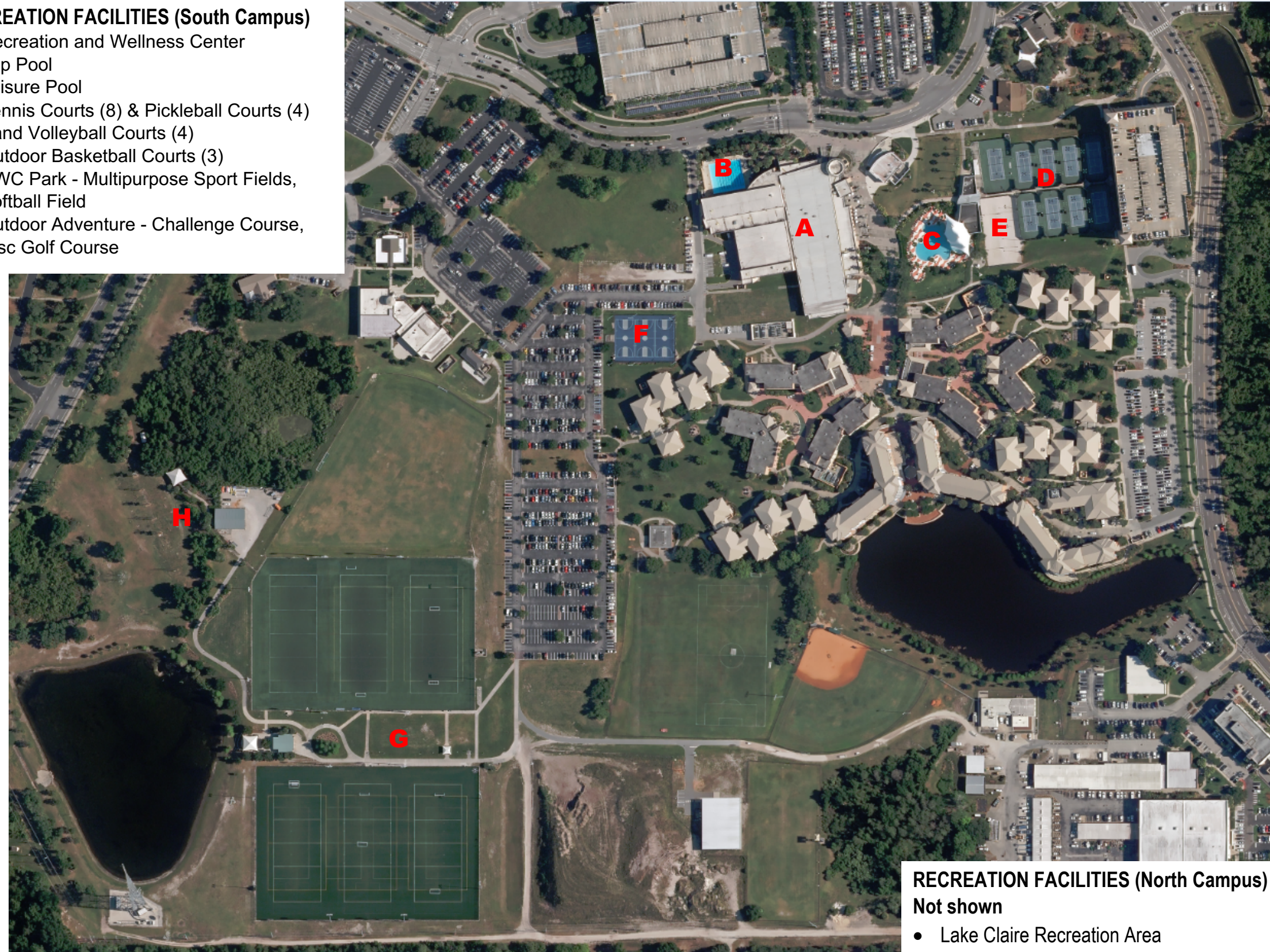
Facilities shared by UCF Community and Local Community

Description	Size	Typical Uses
Nature Trails	~ 3 miles	Hiking, biking, nature observation
Wetlands		
Upland Preservation		See 5.0 Conservation Element for acreage of Conservation and Preservation areas
Lakes		

Exhibit 6.4-2
Recreation and
Wellness Current
Facilities Inventory Map

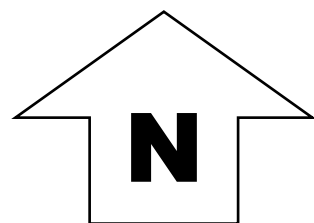
RECREATION FACILITIES (South Campus)

- A. Recreation and Wellness Center
- B. Lap Pool
- C. Leisure Pool
- D. Tennis Courts (8) & Pickleball Courts (4)
- E. Sand Volleyball Courts (4)
- F. Outdoor Basketball Courts (3)
- G. RWC Park - Multipurpose Sport Fields, Softball Field
- H. Outdoor Adventure - Challenge Course, Disc Golf Course



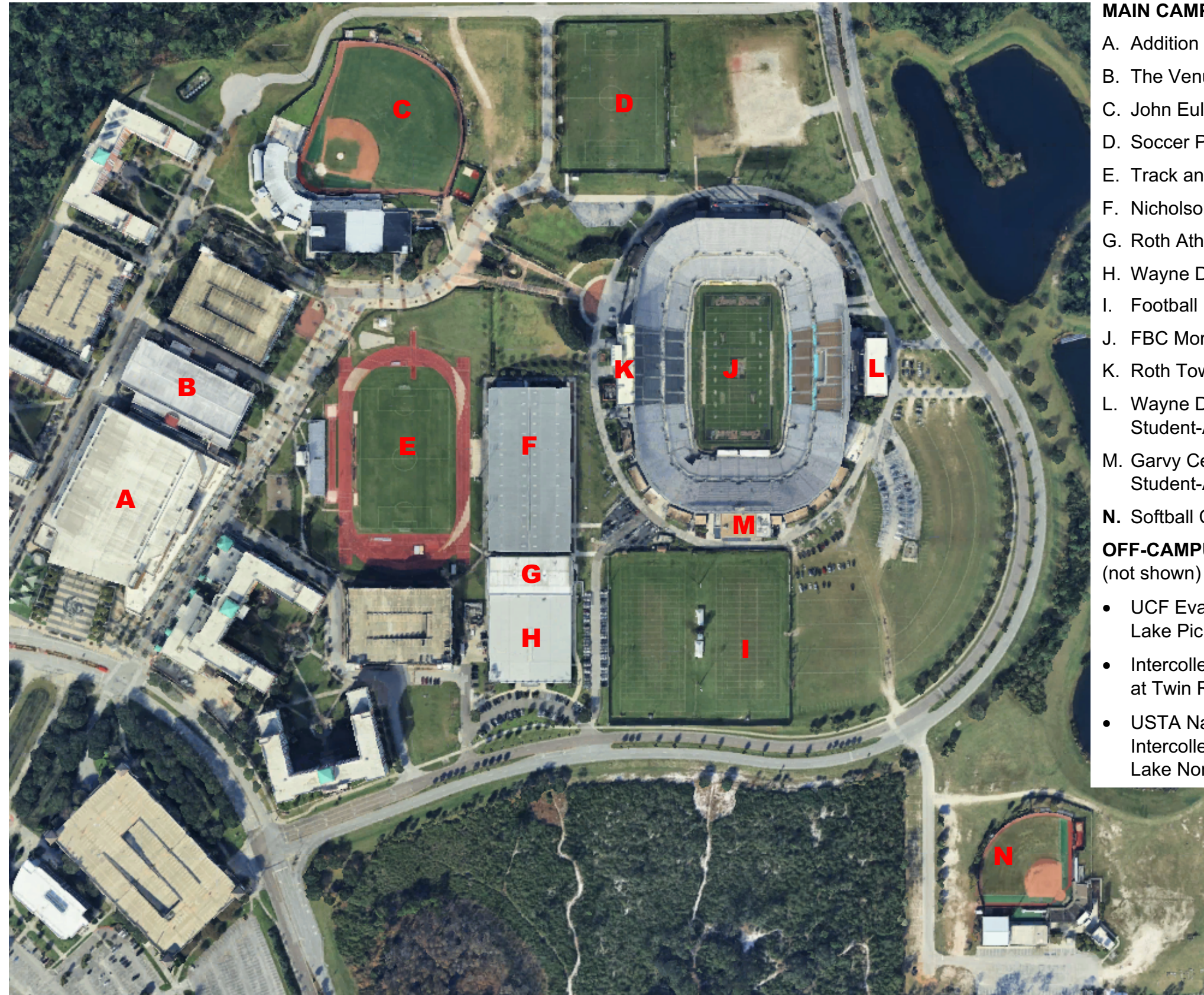
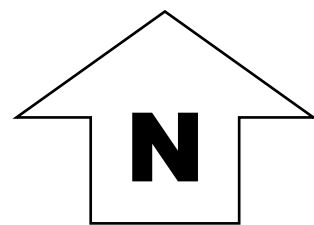
RECREATION FACILITIES (North Campus)
Not shown

- Lake Claire Recreation Area



6.0 RECREATION AND OPEN SPACE

Exhibit 6.4-3
UCF Athletics
Association -
Current Facilities
Inventory Map



MAIN CAMPUS FACILITIES

- A. Addition Financial Arena
- B. The Venue
- C. John Euliano Park (baseball)
- D. Soccer Practice Field
- E. Track and Soccer Complex
- F. Nicholson Field House
- G. Roth Athletics Center
- H. Wayne Densch Sports Center
- I. Football Practice Fields
- J. FBC Mortgage Stadium
- K. Roth Tower
- L. Wayne Densch Center for Student-Athlete Leadership
- M. Garvy Center for Student-Athlete Nutrition
- N. Softball Complex

OFF-CAMPUS FACILITIES

(not shown)

- UCF Evans Family Rowing Center. Lake Pickett (UCF-managed)
- Intercollegiate Golf Training Center at Twin Rivers GC, Oviedo
- USTA National Campus Intercollegiate Tennis Center Lake Nona