

University of Central Florida

2020-30 Campus Master Plan Update



INFORMAL INFORMATION SESSION

May 15, 2019

Schedule

KEY DATES

May 15, 2019

MEETING - Informal Information Session (statutory)

June 15 - 30, 2019

Campus Master Plan Draft is reviewed by UCF Administration

July 17, 2019

MEETING - First Public Hearing (statutory)

July 22, 2019

Campus Master Plan Draft submitted for 90-day review (statutory)

- Sent to Host and Affected Local Governments
- Sent to Local and State Review Agencies
- Placed in the UCF Library
- Posted on a UCF Website

October 21, 2019

90-Day Review Period Ends
UCF prepares the Campus Master Plan for adoption.

November 2019 (TBD)

MEETING - Second Public Hearing (statutory)

Special Meeting - UCF Board of Trustees adopts the Campus Master Plan

Notice of Adoption

Notice to certain affected persons (statutory)

Notice must be sent, within 45 days, to any affected person who submitted comments on the draft Campus Master Plan

Challenge Period

Certain affected persons may challenge the Campus Master Plan

Within 30 days after receipt of the notice of adoption or after the date the adopted plan is available for review, an affected person may challenge the campus master plan as not being in compliance with this section or any rule adopted under this section.

Statute, Regulation, Jurisdiction

Section 1013.30 Florida Statutes

The Campus Master Plan must contain 8 REQUIRED ELEMENTS

1. FUTURE LAND USE
2. HOUSING
3. RECREATION AND OPEN SPACE
4. GENERAL INFRASTRUCTURE
5. TRANSPORTATION
6. INTERGOVERNMENTAL COORDINATION
7. CONSERVATION
8. CAPITAL IMPROVEMENTS

Statute, Regulation, Jurisdiction

Board of Governors Regulations - Chapter 21

21.111 The Campus Master Plan shall be consistent with the State Comprehensive Plan and not in conflict with the adopted comprehensive plans of the host and affected local governments.

21.202 The Campus Master Plan must include eight (8) REQUIRED ELEMENTS. Optional elements are permitted. Related elements may be combined.

Statute, Regulation, Jurisdiction

JURISDICTION
of the
Campus Master Plan
extends only to the
UCF MAIN CAMPUS

UCF has prepared the following elements since 1995:

- | | |
|--------------------------------------|--------------------------------------------|
| 1. ACADEMIC MISSION | 10. UTILITIES |
| 2. ACADEMIC PROGRAMS | 11. TRANSPORTATION* |
| 3. URBAN DESIGN | 12. INTERGOVERNMENTAL COORDINATION* |
| 4. FUTURE LAND USE* | 13. CONSERVATION* |
| 5. ACADEMIC FACILITIES | 14. CAPITAL IMPROVEMENTS* |
| 6. SUPPORT FACILITIES | 15. ARCHITECTURAL DESIGN GUIDELINES |
| 7. HOUSING* | 16. LANDSCAPE DESIGN GUIDELINES |
| 8. RECREATION AND OPEN SPACE* | 17. FACILITIES MAINTENANCE |
| 9. GENERAL INFRASTRUCTURE* | |

* Required Elements

Proposed Changes

- Adding New Elements
- Renaming Elements
- Combining Elements
- Retiring Elements
- Adding a Vision Statement
- Adding Guiding Features to each Element
 - Introduction
 - Related Elements
 - Table of Contents
 - Statute/Regulation

The Elements

1.0 INTRODUCTION

- The INTRODUCTION is an over-arching view of the planning process, as well as the changes and improvements to the 2020-30 Campus Master Plan. It includes a snapshot of the University administration and organization at the time of adoption.

1.0 INTRODUCTION

2.0 FUTURE LAND USE & URBAN DESIGN

- **FUTURE LAND USE is a required Element.**

UCF cannot consider future land uses in the absence of urban design principles, or vice versa, therefore FUTURE LAND USE has been combined with the optional element, URBAN DESIGN.

The Elements

1.0 INTRODUCTION

2.0 FUTURE LAND USE & URBAN DESIGN

3.0 HOUSING

- HOUSING is a required Element.

The Elements

1.0 INTRODUCTION

2.0 FUTURE LAND USE & URBAN DESIGN

3.0 HOUSING

4.0 ATHLETICS, RECREATION & OPEN SPACE

- **RECREATION & OPEN SPACE is a required Element.**

Although Athletics was always included in this Element; the 2020-30 Campus Master Plan highlights UCF Intercollegiate Athletics and provides an opportunity for UCFAA to state its unique goals.

The Elements

1.0 INTRODUCTION

2.0 FUTURE LAND USE & URBAN DESIGN

3.0 HOUSING

4.0 ATHLETICS, RECREATION & OPEN SPACE

5.0 GENERAL INFRASTRUCTURE & UTILITIES

- GENERAL INFRASTRUCTURE (storm water, sanitary sewer, potable water, solid waste) is a required Element.

GENERAL INFRASTRUCTURE has been combined with the optional Element, UTILITIES (chilled water, electrical power, natural gas, and telecommunication).

6.0 TRANSPORTATION

- TRANSPORTATION is a required Element.

The Elements

6.0 TRANSPORTATION

7.0 INTERGOVERNMENTAL COORDINATION

- INTERGOVERNMENTAL COORDINATION is a required Element.

6.0 TRANSPORTATION

7.0 INTERGOVERNMENTAL COORDINATION

8.0 PUBLIC SAFETY

- UCF has introduced a new element, PUBLIC SAFETY.

This Element will allow UCF to set goals to ensure the protection of faculty, staff, students, and visitors against threats to their well-being; and to maintain compatibility with our neighbors.

6.0 TRANSPORTATION

7.0 INTERGOVERNMENTAL COORDINATION

8.0 PUBLIC SAFETY

9.0 CONSERVATION

- **CONSERVATION** is a required Element.

It includes the conservation of both natural resources and energy.

The Elements

6.0 TRANSPORTATION

7.0 INTERGOVERNMENTAL COORDINATION

8.0 PUBLIC SAFETY

9.0 CONSERVATION

10.0 CAPITAL IMPROVEMENTS & IMPLEMENTATION

- CAPITAL IMPROVEMENTS is a required Element.

UCF has paired CAPITAL IMPROVEMENTS with a new element IMPLEMENTATION – one that documents the steps taken to carry a project from “Ideation to Construction”.

Optional Elements

The Optional Elements are being reexamined for compliance with the purpose and intent of a Campus Master Plan.

- ACADEMIC MISSION (retired)
- ACADEMIC PROGRAMS (retired)
- URBAN DESIGN (combined with Future Land Use)
- UTILITIES (combined with General Infrastructure)
- ARCHITECTURAL DESIGN GUIDELINES (retired)
- LANDSCAPE DESIGN GUIDELINES (retired)
- ACADEMIC & SUPPORT FACILITIES (TBD)
- FACILITIES MAINTENANCE (TBD)

SUSTAINABILITY

SUSTAINABILITY was considered for inclusion as a new element. But, the UCF Sustainability Initiatives department determined that

SUSTAINABILITY TOUCHES EVERY ELEMENT

Now SUSTAINABILITY will be found throughout the master plan.

Goals, Objectives, & Policies

GOALS, OBJECTIVES & POLICIES

GOAL 1: The long-term end toward which programs or activities are ultimately directed.

OBJECTIVE 1.1: A specific, measurable, intermediate end that is achievable and marks progress toward a goal.

POLICY 1.1.1: The way in which programs and activities are conducted to achieve an identified goal

POLICY 1.1.2: More ways...

Data & Analysis

DATA & ANALYSIS

Narrative

D&A reports support the recommendations in each required element.

Goals, objectives, policies, standards, findings and conclusions must be based on data.

Data must be from professionally-accepted sources (best available existing data).

Tables, charts, graphs, maps, figures, sources, and their limitations must be clearly described.

2020-30 UCF CAMPUS MASTER PLAN UPDATE

The Old Look

2.9 GENERAL INFRASTRUCTURE ELEMENT Goals, Objectives and Policies

OBJECTIVE 1.4: To improve the existing SJRWMD permitted stormwater management system when possible and funding is available.

POLICY 1.4.1: The University shall identify storm water basins that do not meet current SJRWMD standards, develop an improvement plan that will meet current standards, and implement the plan when funding is available.

POTABLE WATER SUB-ELEMENT

GOAL 2: To continue to produce and provide quality potable water to the campus with reliable backup sources.

OBJECTIVE 2.1: To ensure that adequate potable water supply and distribution piping is available for both new and re-developed facilities.

POLICY 2.1.1: The University shall periodically design and construct potable water system improvements to (1) eliminate existing system deficiencies, (2) maintain/improve the existing system characteristics, and (3) expand the system to accommodate increased demand from proposed growth. The University will continue to correct deficiencies in the piping system and maintain that piping system and its associated valves.

POLICY 2.1.2: The campus water system shall have redundancy built into the supply and distribution network. Supply redundancy can be achieved by multiple water plant sources (i.e. Orange County and the Central Florida Research Park) and by multiple raw water wells. Interconnects with various utilities are desired for their capability to be used as backups in emergencies. Distribution network redundancy can be achieved by creating looped piping systems and eliminating dead-end pipe systems.

POLICY 2.1.3: Future increases in campus consumptive uses, whether residential or non-residential related, shall be approved only upon a finding that existing potable water treatment and distribution facility capacity is already on-line and available to accommodate the increased need. If capacity is not available, funding will be provided so capacity can be brought on-line at the forecasted future time of need.

OBJECTIVE 2.2: To meet adopted levels of service for potable water system fire flow and consumptive capacity to accommodate the proposed demand.

POLICY 2.2.1: Future development on the UCF campus which increases the demand for potable water shall be approved on the provision of a potable water distribution system which serves the proposed development under one or more of the following level of service standards:

The New Look

2.9 GENERAL INFRASTRUCTURE ELEMENT Goals, Objectives and Policies

OBJECTIVE 1.4: To improve the existing SJRWMD permitted stormwater management system when possible and funding is available.

POLICY 1.4.1: The University shall identify storm water basins that do not meet current SJRWMD standards, develop an improvement plan that will meet current standards, and implement the plan when funding is available.

POTABLE WATER SUB-ELEMENT

GOAL 2: To continue to produce and provide quality potable water to the campus with reliable backup sources.

OBJECTIVE 2.1: To ensure that adequate potable water supply and distribution piping is available for both new and re-developed facilities.

POLICY 2.1.1: The University shall periodically design and construct potable water system improvements to (1) eliminate existing system deficiencies, (2) maintain/improve the existing system characteristics, and (3) expand the system to accommodate increased demand from proposed growth. The University will continue to correct deficiencies in the piping system and maintain that piping system and its associated valves.

POLICY 2.1.2: The campus water system shall have redundancy built into the supply and distribution network. Supply redundancy can be achieved by multiple water plant sources (i.e. Orange County and the Central Florida Research Park) and by multiple raw water wells. Interconnects with various utilities are desired for their capability to be used as backups in emergencies. Distribution network redundancy can be achieved by creating looped piping systems and eliminating dead-end pipe systems.

POLICY 2.1.3: Future increases in campus consumptive uses, whether residential or non-residential related, shall be approved only upon a finding that existing potable water treatment and distribution facility capacity is already on-line and available to accommodate the increased need. If capacity is not available, funding will be provided so capacity can be brought on-line at the forecasted future time of need

OBJECTIVE 2.2: To meet adopted levels of service for potable water system fire flow and consumptive capacity to accommodate the proposed demand.

POLICY 2.2.1: Future development on the UCF campus which increases the demand for potable water shall be approved on the provision of a potable water distribution system which serves the proposed development under one or more of the following level of service standards:

5.0 GENERAL INFRASTRUCTURE & UTILITIES GOALS, OBJECTIVES, & POLICIES

GOALS, OBJECTIVES, & POLICIES

GOAL 1: Provide quality potable water to the campus with reliable backup sources.

OBJECTIVE 1.1: Ensure that adequate potable water supply and distribution piping is available for both new and re-developed facilities.



OBJECTIVE 1.2: Maintain the current quality and quantity of raw water available in the campus' potable water well field.

OBJECTIVE 1.3: Conserve potable water for human health and advancing research, as limited by the St. Johns River Water Management District of how much water it can lawfully draw from the Floridian Aquifer on an annual basis (*Policy 5.5*).

POLICY 1.1.1: The University shall rely upon the land use and building programs identified in the Comprehensive Master Plan, and ongoing implementation of Capital Plans/Programs, to address capacity limited by the St. Johns River Water Management District, while continuing to seek a holistic public water system approach to future development when evaluating: indoor, outdoor, and specialized-uses to protect the Central Florida Region water management district and state's precious water resources. Concurrency management systems shall establish an ongoing mechanism that ensures campus facilities and services needed to support development are available in relation to the impacts of such development.

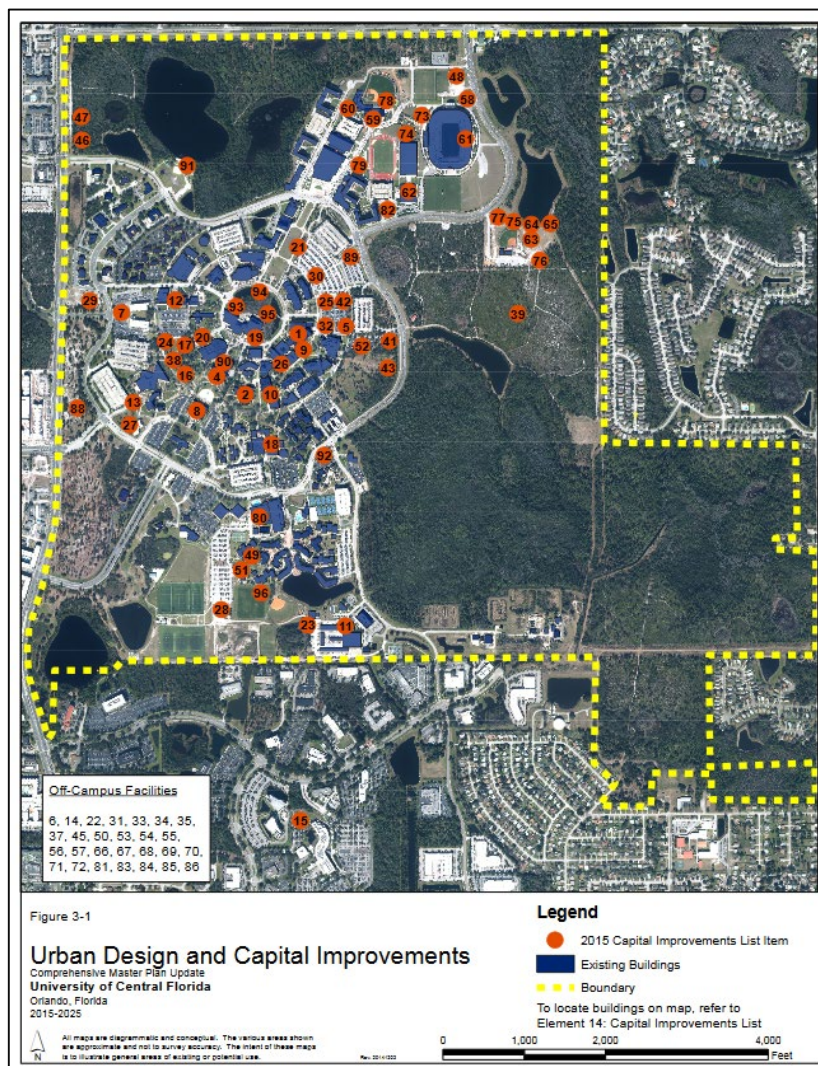
POLICY 1.1.2: The campus water system shall have redundancy built into the supply and distribution network. Supply redundancy can be achieved by multiple water plant sources (i.e. Orange County and the Central Florida Research Park) and by multiple raw water wells. Interconnects with various utilities are desired for their capability to be used as backups in emergencies. Distribution network redundancy can be achieved by creating looped piping systems and eliminating dead-end pipe systems.

POLICY 1.2.1: The University shall perform annual reviews of major system components of the water supply and distribution system. Review shall include wells, well pumps, water treatment plant components, storage tanks, distribution pumps, backup generators, distribution piping and valves, etc. Based on review, the University shall prepare a capital improvement needs list with schedule for improvements.

POLICY 1.3.1: Regardless of first cost, all new construction and renovations that increase water use shall adhere to the mandatory provisions in the latest ANSI / ASHRAE / USGBC /IES Standard 189.1 – Standard for the Design of High-Performance Green Buildings, and follow the appropriate compliance paths to ensure campus water efficiency and conservation measures are implemented.

POLICY 1.3.2: Pursuant to Consumptive Use Permit Number 2-095-3202-11, UCF shall use all available lower-quality sources of water including reclaimed water, surface water, and storm water in place of higher quality water sources when deemed feasible pursuant to the

The New Look



2015-25 CAMPUS MASTER PLAN UPDATE



2020-30 CAMPUS MASTER PLAN UPDATE

Happy 25th Birthday!

2020-30 UCF CAMPUS MASTER PLAN UPDATE

