

2.1 ACADEMIC MISSION OF THE UNIVERSITY

GOAL 1: To offer the best undergraduate education in the State of Florida.

OBJECTIVE 1.1: To provide for the maintenance or modification of the missions of individual colleges within the University over the planning time frame.

POLICY 1.1.1: The colleges shall continually review and update their missions in relation to the University's mission statement, the five general goals, and the goals of the academic departments and disciplines within their colleges.

POLICY 1.1.2: The University shall complete mission reviews one year prior to when the BOR revisions are due. Each College and Department has established internal procedures for updating and modifying their mission statement, and the missions of the individual colleges are reviewed within the Strategic Planning Five Year Timeline (see Appendix A).

POLICY 1.1.3: These mission statements are forwarded to the Provost for consideration after they have been approved by the College. The Colleges are expected to develop missions and goals that address University level goals and are in concert with the overall mission of the institution.

POLICY 1.1.4: Proposed amendments to the adopted campus master plan shall reflect the most recent BOR-approved mission statement for the University.

OBJECTIVE 1.2: To provide for the maintenance or modification of the mission of the University over the planning time frame.

POLICY 1.2.1: The mission of the University is reviewed within the Strategic Planning five year timeline (see Appendix A). The University shall complete mission reviews one year prior to when the BOR revisions are due.

OBJECTIVE 1.3: To provide for new or modification of existing academic programs and degrees offered.

POLICY 1.3.1: Establishment of new or modification of existing academic programs and degrees offered occur in synchronization with BOR deadlines within the five year strategic planning cycle (see Appendix B).

OBJECTIVE 1.4: To establish priorities among the development of new or modified academic programs.

POLICY 1.4.1: Establishment of priorities among the development of new or modified academic programs and degrees offered occurs in synchronization with BOR deadlines within the five year strategic planning cycle (see Appendix B). The priorities for developing new academic programs and modifying or terminating existing programs are identified in Academic Program Element Policy 1.2.1.

POLICY 1.4.2: The colleges shall continually review and update their degree offerings according to productivity, demand, relation to the mission, and other pertinent factors.

OBJECTIVE 1.5: UCF shall continue its practice of developing a Campus Master Plan, updated at five (5)-year intervals.

POLICY 1.5.1: UCF shall pursue modifications, upgrades and expansion of its physical facilities and infrastructure which are incorporated into the most recently approved Master Plan.

POLICY 1.5.2: UCF shall submit to the Board of Regents, within four years from the date of plan adoption and every five years thereafter, an evaluation and appraisal report which:

- Lists accomplishments during the implementation of the campus master plan, describing major problems associated with development and land uses, and the degree to which the goals, objectives and policies have been successfully reached;

- Identifies obstacles or problems which resulted in underachievement of goals, objectives, or policies;
- Identifies the need for new or modified goals, objectives, or policies needed to correct unanticipated and unforeseen problems and opportunities that have occurred since adoption of the campus master plan;
- Addresses local government and public participation in the process;
- Addresses the effects of changes to the State Comprehensive Plan and to the comprehensive plans of the host local government and any affected local governments;
- Identifies proposed and anticipated plan amendments necessary to address identified problems and opportunities; and
- Identifies a means of ensuring continuous monitoring and evaluation of the plan during the remainder of the overall planning period.

POLICY 1.5.3: UCF shall submit to the Board of Regents, within five years from the date of plan adoption and every five years thereafter, a proposed plan amendment which incorporates the findings and recommendations contained in the evaluation and appraisal report, and which contains updated baseline data (as appropriate) and goals, objectives and policies to be accomplished during the remainder of the overall planning period.

POLICY 1.5.4: UCF shall undertake an annual review of the goals, objectives and policies and programmed improvements identified in the most recently approved Master Plan to determine if amendments modifying the plan are necessary. Should revisions to this Master Plan, either alone or in conjunction with other amendments, exceed the thresholds established in s. 240.155(9), F.S., said amendments shall be reviewed and adopted under the provisions of s. 240.155(6)-(8), F.S. Amendments to this Master Plan which do not exceed these thresholds shall be consolidated into a single submittal and sent to the SUS Office of Capital Programs for review and approval by the Board of Regents.

GOAL 2: To achieve international prominence in key programs of graduate study and research.

OBJECTIVE 2.1: To receive Carnegie Research status for UCF in the next ten years.

POLICY 2.1.1: Selected graduate programs will be targeted and supported in order to achieve or retain international prominence.

GOAL 3: To provide international focus to our curriculum and research programs.

OBJECTIVE 3.1: To identify areas of international strength and potential in support of the teaching, research, and public service missions

POLICY 3.1.1: The University will explore methods of promoting the integration of international topics into the curriculum.

POLICY 3.1.2: The University will explore methods of promoting faculty development and exchange.

GOAL 4: To become more inclusive and diverse.

OBJECTIVE 4.1: To promote the participation of minorities and women as students and employees.

POLICY 4.1.1: UCF will continue to actively recruit and retain minorities and women.

POLICY 4.1.2: UCF shall comply with established Affirmative Action/Equal Employment Opportunity (AA/EEO) guidelines and requirements in student, faculty, administrator, and staff searches.

GOAL 5: To be America's leading partnership university.

OBJECTIVE 5.1: To promote partnerships as an area of emphasis at UCF.

POLICY 5.1.1: UCF will endeavor to increase partnerships across disciplines within the university.

POLICY 5.1.2: UCF will endeavor to increase partnerships within the community, the metropolitan area, the state of Florida, the nation, and the international arena.

OBJECTIVE 5.2: To promote outreach programs, volunteerism, and community-based research.

POLICY 5.2.1: UCF shall continue to systematically develop and engage in quality programs that are responsive to the needs of the community.

POLICY 5.2.2: UCF shall continue to encourage and support the development of high-quality continuing education programs.

POLICY 5.2.3: UCF shall continue to develop, engage in and support programs which enhance K-12 education.

APPENDIX A: STRATEGIC PLANNING TIMELINE

The Strategic Planning Council is a Reporting Committee to the Faculty Senate and recommends to the President on all strategic planning issues including academic planning, institutional effectiveness, accountability, budget planning, and student services. Its scope does not include that of the Campus Master Planning Committee and the specifics of computer policy that are covered by the Computer Policy Committee. The Accountability Committee is a subcommittee of the Council and is responsible for the planning, implementation, and monitoring of the University's Institutional Effectiveness Program and the Accountability Plan.

The duties and responsibilities of this committee are:

- To develop and recommend to the President the University Goals and any budget or academic actions necessary to support these Goals.
- To develop and recommend to the President the University's Action Plan and any budget or academic actions necessary to support those recommendations.
- To develop and recommend to the President the University's Mission Statement.
- To review the annual reports of the Accountability Subcommittee and recommend an appropriate course of action to the President in response to recommendations or findings of the subcommittee.
- To study and make recommendations to the President on any planning issues as requested by the President.
- To provide an annual report to the President and to the Chair of the Faculty Senate of its actions and recommendations.

The proposed timeline for the annual planning activities is outlined below. The timeline and events will be modified on an annual basis as needed. The purpose of the timeline is to create a predictable framework for the planning process.

August

Kickoff meeting with the President, Provost, and Steering Committee.

September

Strategic Planning Committee (SPC) meets as a whole, gets charge from Chair, set subcommittees, selects Executive Committee, and discusses the year's agenda.

October

SPC Executive Committee joins with Provost, deans, VPs, external strategic planning consultant, and other selected administrators to set yearly planning and budget priorities.

SPC sends out call for white papers for Strategic Planning Initiative Award Program to faculty. White papers due by mid November.

SPC sends request to deans, etc, for appointees to initiatives review committee.

Accountability Committee makes presentation on B.O.R. accountability report to President and Provost (open forum).

Accountability subcommittees meet:

SPC Chair meets with each committee to give them their year's charge.

This starts the collection of data, setting of new measures, etc.

Subcommittee reports are due by the first week of March.

In Years #2 and #5, SPC sends requests to departments and colleges to do SWOT (strengths, weaknesses, opportunities, and threats) analysis.

Department reports are due to colleges by end of November.

College reports are due to SPC and Provost by end of December.

These reports should include college-specific SWOT analysis.

SPC prepares and sends newsletter to faculty making them aware of planned activities of SPC, calling for proposals, etc.

November

Initiative review committee reads white papers and provides feedback to proposal teams by end of Fall semester.

December

Review committee sends feedback to proposal teams.

SPC issues call for proposals to faculty.

Full proposals are due by last week of January.

January

Mid-term report to the President and Provost.

Full proposals are received by the end of the month.

In years #2 and #5, college and department reports are received at start of month. SPC Executive Committee reviews reports and provide input to Provost by last week of January.

February

Initiative committee reviews full proposals.

Recommendations are due to Provost by last week of February.

March

Accountability subcommittee submit reports by end of first week.

Reports are distributed to entire SPC.

Second full SPC meeting occurs in third week of month to accept, amend, or reject accountability reports and to be apprised of year's progress.

SPC Executive Committee briefs deans on year's activities.

SPC prepares and sends Newsletter to faculty summarizing year's activities, announcing initiatives awards, and calling April open forum.

April

SPC holds open meeting for all members of campus community.
 Executive Committee meets with Provost on policy issues related to the budget.
 Strategic Planning presentation to the President, Provost, and Chair of the Faculty Senate.

APPENDIX B: FIVE-YEAR STRATEGIC PLANNING CYCLE

Five-year Strategic Planning Cycle: (Timing is offset one year from BOR).

Year #1 1992-93	Obtain Approval of New UCF Strategic Plan in Fall Measure Attainment of UCF Goals Provide Input to BOR for their Master Plan
Year #2 1993-94	Measure Attainment of UCF Goals Receive New BOR Master Plan
Year #3 1994-95	Produce Mid Course Correction on Existing UCF Plan Provide Input to BOR for their Mid Course Correction
Year #4 1995-96	Measure Attainment of UCF Goals Receive BOR Mid Course Correction
Year #5 1996-97	Perform UCF SWOT Analysis and Prepare New Strategic Plan
Year #1 1997-98	Obtain Approval of New UCF Strategic Plan in Fall Measure Attainment of UCF Goals Provide Input to BOR for their Master Plan
Year #2 1998-99	Measure Attainment of UCF Goals Receive New BOR Master Plan
Year #3 1999-2000	Produce Mid Course Correction on Existing UCF Plan Provide Input to BOR for their Mid Course Correction
Year #4 2000-01	Measure Attainment of UCF Goals Receive BOR Mid Course Correction
Year #5 2001-02	Perform UCF SWOT Analysis and Prepare New Strategic Plan

Departments and colleges will provide SWOT analysis and updates to their own plans in support of SPC activities in Years #2 and #5.

2.2 ACADEMIC PROGRAMS

GOAL 1: To offer the best undergraduate education in the State of Florida.

OBJECTIVE 1.1: UCF shall plan for and support student enrollments of 22,270 FTE and 40,636 headcount by the year 2005-06.

POLICY 1.1.1: UCF shall plan for and support enrollment based on the following projections*:

<u>Year</u>	<u>FTE</u>	<u>Headcount</u>
1995-96	14,667	26,502
2000-01	18,571	33,675
2005-06	22,270	40,636

* Includes Main Campus and Daytona, Brevard, South Orlando, and other off-campus facilities.

OBJECTIVE 1.2: To define the future distribution and location of planned and proposed academic programs.

POLICY 1.2.1: UCF shall establish the following academic programs during the planning period, which have been approved for development by the Board of Regents (CIP Code in parentheses):

BACCALAUREATE LEVEL

Mass Communication
Advertising and Public Relations (09.0201)

Health Professions & Related Sciences
Occupational Therapy (51.2306)

Business and Management
International Business (52.1101)
Real Estate (52.1501)

MASTER'S LEVEL

Education
English As A Second Language (13.1401)

Engineering
Aerospace Engineering (14.0201)
Optical Science and Engineering (14.1002)

Foreign Languages
Foreign Languages, Multiple (15.0101)

Protective Services
Criminal Justice (43.0104)

Health Professions & Related Sciences
Nursing (Feasibility/Planning Authorized 1/93) (27.0301)

Business and Management
Tourism Administration (52.0903)

DOCTORAL LEVEL

Education
Instructional Technology (13.0501)

Engineering
Optical Science and Engineering (14.1002)

Mathematics
Mathematics (Feasibility/Planning Authorized 1/93) (27.0301)

Psychology
Clinical Psychology (42.0201)

Public Administration and Service
Public Affairs (44.9999)

OBJECTIVE 1.3: To define the future distribution and location of the planned student population.

POLICY 1.3.1: Planned student populations shall be distributed among University facilities approximately as follows:

<u>Site</u>	<u>FTE</u>	<u>Headcount</u>
Main Campus		
1995-96	13,242	23,791
2000-01	16,675	29,806
2005-06	19,876	35,684
Daytona		
1995-96	459	808
2000-01	609	1,072
2005-06	768	1,351
Brevard		
1995-96	592	1,125
2000-01	780	1,480
2005-06	985	1,866
South Orlando		
1995-96	40	123
2000-01	40	123
2005-06	81	252
Off-Campus		
1995-96	334	655
2000-01	467	1,194
2005-06	560	1,483

OBJECTIVE 1.4: To establish priorities for distribution of funding.

POLICY 1.4.1: After funds have been deducted for line items, specials, and other considerations, the Office of Academic Affairs shall apply the Pegasus model for the distribution of funds based on enrollment. The Office of Academic Affairs works with the colleges using BOR budget tables to determine the projected cost for new programs. Each new proposal must include the budget tables.

Once agreement is reached, the amount of the budget shall be considered to be the commitment of the University until the third year of implementation. At that time, it is expected that programs will be self sufficient or fully funded through the colleges' budgets.

POLICY 1.4.2: The colleges shall continually evaluate the programs they offer in relation to the relevance to and support of university goals. Based upon their findings, colleges may propose to implement new programs or terminate or modify existing programs. All these options are processed in cooperation with the Office of Academic Affairs. Proposed program lists related to UCF's academic priorities shall be developed at the college level throughout their planning processes. Priorities shall be discussed between the deans and Provost as appropriate. A university level list of program priorities is produced once every two years. This list is forwarded to the BOR for consideration and approval during the Academic Master Plan updating process.

POLICY 1.4.3: Program terminations may be handled through the BOR at any time. The procedure for program modifications varies depending on the magnitude of the proposed changes. Most minor modifications are made through the colleges and do not require BOR action.

POLICY 1.4.4: If a program is not on the BOR five year program list, the BOR will not accept a new degree proposal for the program. The availability of outside funding alone will not cause the university to consider a new degree program; however, such funding may allow a program to be implemented prior to the previous timeline.

POLICY 1.4.5: Grants awarded to faculty in the university take into consideration space, equipment, and other budgetary needs when they are under development. These budgets must be approved by the faculty members' "supervisor". Often grants provide funds for these considerations and serve to reinforce and support the academic mission of the department. The Division of Sponsored Research must review and submit all grant proposals on behalf of UCF. In this role, the Office assures that the university has the capacity to "house" the grant.

POLICY 1.4.6: Plan amendments which, alone or in conjunction with other plan amendments, exceed the thresholds established in s.240.155(9), F.S., shall be reviewed and adopted under the provisions of s.240.155(6)-(8), F.S. Amendments which do not exceed these thresholds shall be consolidated into an annual submission and submitted to the Office of Capital Programs for review and approval by the Board of Regents.

2.3 URBAN DESIGN

GOAL 1: To create a campus which is a cohesive environment, characterized by appropriate building placement, organized open spaces and logical pedestrian and vehicular circulation.

OBJECTIVE 1.1: To protect, enhance and develop symbolic campus spaces.

POLICY 1.1.1: The Master Planning Committee together with the Administration, Faculty and the Office of Facilities Planning shall review the proposed campus development for compliance with the Master Plan Urban Design Criteria, as well as all other appropriate master plan goals, objectives and policies.

POLICY 1.1.2: Axial arms of open space between buildings in the academic core shall be encouraged as visual corridors in and out of the university.

POLICY 1.1.3: Building edges shall reinforce the pattern of open spaces within academic core and housing areas.

POLICY 1.1.4: Landscaping and covered walkways can be used as tools of enclosure and space makers, as well as elements of continuity.

POLICY 1.1.5: Develop and infill academic quadrangles within the academic core. Preserve internal open spaces.

POLICY 1.1.6: Emphasize sequence of movement from open space to open space through structured gates within the academic core.

POLICY 1.1.7: Structured gates are recommended by the master plan.

POLICY 1.1.8: Preserve and enhance open space by consolidating on-grade parking areas into parking structures.

POLICY 1.1.9: Four percent of future building construction budgets and funding shall be allotted to the development of the campus open spaces which they shall define.

POLICY 1.1.10: The timing for the development of the campus spatial environment, as determined by the placement of buildings and open spaces, shall occur in the following order:

1- Student Services Quadrangle defined by:
the Communications Building in 1995
the Bookstore addition in 1996

2- Arena Mall defined by:
the clearing of temporary parking between
Pegasus Circle and Mercury Circle by 1995
and the Health and Public Affairs Building in 1996
the Classroom Building II in 1999
the Health and Public Affairs Bldg. II in 2004

3- Health and Public Affairs Quadrangle defined by:
Health and Public Affairs Building in 1996

Business and Administration Building in 2003
Health and Public Affairs Bldg. II in 2004
Science and Engineering Library in 2008
University Research Center in 2009

4- Engineering Sciences Quadrangle defined by:
the Engineering Research Building in 1997
the Simulation and Training Building in 2002

5- Visual Arts Mall defined by:
Arts Complex II Phase I in 2000
Arts Complex II Phase II in 2008

6-Central Florida Boulevard Mall defined by:
the extension of Central Florida
Boulevard by 2000

OBJECTIVE 1.2: To organize the placement of service and loading functions to avoid interference with campus open spaces and circulation.

POLICY 1.2.1: Service and loading areas shall be located adjacent to the 400 and 1200 foot rings for academic buildings.

POLICY 1.2.2: In order to minimize the number of sites for service and loading, their locations shall be selected to serve as many buildings as possible from one area.

POLICY 1.2.3: Non-vehicular paths shall be located so as not to cross or be adjacent to service areas.

POLICY 1.2.4: Service and loading areas shall be visually and acoustically screened from their surroundings, through the use of landscaping, fencing, walls and placement of buildings.

POLICY 1.2.5: Vehicular access to service areas shall be minimized and restricted to authorized vehicles only.

OBJECTIVE 1.3: To ensure compatibility of the university with the host community boundary and context area with respect to building location, orientation, mass and scale, landscape character and ground level character.

POLICY 1.3.1: Principal academic buildings shall be contained within the 1200 foot radius.

POLICY 1.3.2: A 200 foot landscape buffer shall be maintained around the entire UCF campus.

POLICY 1.3.3: The University will coordinate, with the host community regarding issues related to the urban design character of the University with respect to the context area.

POLICY 1.3.4: Develop visual and physical links with the community that encourage public transportation and participation in campus activities.

OBJECTIVE 1.4: To maintain and enhance functional linkages between major campus activities.

POLICY 1.4.1: Campus activities of similar function shall be clustered together.

POLICY 1.4.2: Encourage separation of vehicular and non-vehicular circulation paths.

POLICY 1.4.3: Articulate vehicular and non-vehicular paths with landscaping, grading design and building edges.

POLICY 1.4.4: Campus housing and permanent parking areas shall be constructed outside of the 1200 foot radius of the campus central core.

POLICY 1.4.5: Locate retail and support services (e.g. close to campus housing; i.e., fast food, laundry, social activity centers, etc.)

POLICY 1.4.6: Locate parking facilities to support the academic, recreational and housing centers on the campus.

POLICY 1.4.7: The construction or installation of temporary and portable buildings on campus shall be discouraged.

OBJECTIVE 1.5: Campus buildings and facilities shall be energy efficient.

POLICY 1.5.1: Minimize the east and west exposures of buildings.

POLICY 1.5.2: Provide overhangs and shading of south facing windows.

POLICY 1.5.3: By the Fall of 1995 the university shall establish and enforce minimum thermal insulation values for exterior walls and roofs of all air conditioned facilities.

POLICY 1.5.4: Continue to connect all new and existing campus facilities to the centrally controlled Energy Management System (EMS).

POLICY 1.5.5: Position landscaping to help shade campus buildings.

POLICY 1.5.6: Windows may have tinting but the color and reflectance must comply with the UCF Architectural Guidelines and be approved by the Director of Facilities Planning.

POLICY 1.5.7: Light fixtures shall have energy efficient ballasts.

POLICY 1.5.8: Energy saving features, such as occupancy controls on lighting, shall be considered for new and existing facilities.

DATE
TIME

UCF Ca

12

DATE
TIME

2.4 FUTURE LAND USE

GOAL 1: To create development pattern that directs future growth into developable areas and away from environmentally sensitive areas, in a manner that is compatible with the surrounding community.

OBJECTIVE 1.1: To protect natural resources including surface waters and wetlands.

POLICY 1.1.1: UCF shall establish Conservation areas as identified on the Future Land Use Map (Figure 4-1) and on the Conservation Element Map (Figure 13-1). No construction is anticipated in these areas except for minimal structures and improvements necessary to ensure safe access and essential support functions.

POLICY 1.1.2: Before any such construction is authorized and a plan of development is approved, UCF shall review all available and economic options (including the costs of mitigation). If this review indicates that development in designated Conservation areas is the only viable option, then UCF shall pursue all reasonable efforts to minimize and mitigate any unavoidable impacts to these areas.

POLICY 1.1.3: Should mitigation be deemed necessary the Director of Facilities Planning shall be responsible for coordinating any necessary actions with the appropriate UCF departments. The Director shall also coordinate any mitigation requirements through the appropriate cognizant federal, state and regional agencies in accordance with their permitting processes.

POLICY 1.1.4: A definitive campus arboretum site shall be established for the study and preservation of native plant and animal species by the fall of 1995. Non-native species shall be limited to the arboretum outside of native natural communities.

OBJECTIVE 1.2: To minimize land use compatibility problems between the university and the host community.

POLICY 1.2.1: Pursuant to s.240.155(9), F.S., any amendment to the adopted Campus Master Plan shall be transmitted to the host and affected local governments and other external review agencies for review if such amendment, alone or in conjunction with other amendments, would:

- a) increase density or intensity of use of land on campus by more than 10%;
- b) decrease the amount of natural areas, open space, or on campus by more than 10%; or
- c) rearrange land uses in a manner that will increase the impact of any proposed campus development by more than 10% on a road or another public facility or service provided or maintained by the state, the county, the host local government, or any affected local government.

POLICY 1.2.2: Proposed amendments to the adopted campus master plans which do not exceed the thresholds established in s.240.155(9), F.S., and which have the effect of changing land use designations or classifications, or impacting off-campus facilities, services or natural resources, shall be submitted to the host and affected local governments for a courtesy review.

POLICY 1.2.3: A 200 foot wide (minimum) green buffer shall be maintained around the entire periphery of the campus. Exceptions shall only be made for entrances, retention ponds and campus rights of way. In order to maintain the effectiveness of the buffer, non-invasive native plant species will be used in landscaping activities.

OBJECTIVE 1.3: To correct existing land use compatibility problems on the university campus.

POLICY 1.3.1: All permanent academic functions shall be located between the 400 foot radius (Pegasus Circle) and the 1200 foot radius (Apollo Circle).

POLICY 1.3.2: Academic core areas or quadrangles shall be created by locating academic uses that are linked, similar or adjacent to each other.

POLICY 1.3.3: Surface parking areas shall be located outside of the 1200 foot radius (Apollo Circle) and inside of Gemini Boulevard, in order to reduce vehicular vs. pedestrian conflicts on campus. Exceptions may be made for temporary non-paved lots.

POLICY 1.3.4: Overflow parking areas may be located outside of Gemini Blvd., but shall never be located within the 1200 foot radius (Apollo Circle).

POLICY 1.3.5: Areas identified in the master plan as temporary classrooms and parking lots shall remain as so until future projects proposed for those areas are developed.

POLICY 1.3.6: All parking shall be removed from the area where the Temporary 600 parking lot is located by the year 2000.

POLICY 1.3.7: In order to preserve the open space nature of the campus and to minimize impervious surface needs, parking lot areas beginning in 1997 will be consolidated into structured parking decks.

POLICY 1.3.8: In order to minimize automobile traffic, and therefore conflicts resulting from high vehicular levels of service, proposed parking decks shall be placed at strategic points near campus entrances. This will intercept a high volume of vehicles before they penetrate the campus circulation routes.

POLICY 1.3.9: Gemini Boulevard south shall be re-aligned in the direction of Central Florida Boulevard so that existing parking lots in the vicinity fall inside the Gemini Loop, therefore reducing present vehicular vs. pedestrian conflicts.

POLICY 1.3.10: The Master Planning Committee along with the administration, faculty and the Office of Facilities Planning shall review all proposals for compliance with the Master Plan's criteria for the Land Use Element.

POLICY 1.3.11: In the event that unforeseen changes are deemed necessary, to the Land Use Plan, the Master Planning Committee together with the administration, faculty, the Office of Facilities Planning and with the president's approval shall make the necessary amendments. Campus Master Plan amendments that, alone or in conjunction with other amendments, exceed the thresholds established in s.240.155(9), F.S., and Future Land Use Element Policy 1.2.1, shall be reviewed and adopted under the provisions of s.240.155(6)-(8), F.S.; and that amendments to the Campus Master Plan that do not exceed these thresholds shall be consolidated into an annual submission and submitted to the Office of Capital Programs for review and approval by the Board of Regents.

POLICY 1.3.12: All decisions concerning land use and development on campus, especially those which concern Policy 1.3.11, must be coordinated with the present Capital Improvements Plan.

POLICY 1.3.13: Future development shall comply with the following densities or intensities of use:

South Housing Village 57.2 Residents per Acre

Central Florida Blvd. Housing 75.33 Residents per Acre

South Greek Park 20.1 Residents per Acre

Parking 102.5 Spaces per Acre
Academic Core Area .20 FAR
East Academic Area .30 FAR
Athletic & Recreation Area .30 FAR
Conservation Areas .05 FAR
Ponds & Lakes .05 FAR
Arboretum .05 FAR
Specialized Housing .10 FAR
Support Services 1.0 FAR
Utilities 1.0 FAR
Special Use 1.0 FAR

Note: The FAR values assigned to conservation, arboretum and retention areas take into consideration that although these are zones of no-development there might arise the need to provide structures which house utilities and other similar needs.

OBJECTIVE 1.4: To coordinate future land uses with the availability of facilities and services.

POLICY 1.4.1: Projects that propose increases to campus infrastructure, utilities, facilities or services shall be approved only if such facilities are funded and already on-line to accommodate the need or will be on-line prior to occupancy of any structure to be served by such infrastructure, utilities, facilities or services.

POLICY 1.4.2: The following order of priorities shall be implemented concerning coordination of land uses with appropriate facilities and services:

- Priority 1
Eliminate existing system deficiencies which may prevent future development.
- Priority 2
Maintain the existing system as long as it is deemed capable of maintaining immediate needs.
- Priority 3
Systems shall be expanded to accommodate needs.

POLICY 1.4.3: Campus development which might increase demands for solid waste collection and disposal shall be approved under provisions delineated in Policy 4.2.1 of the General Infrastructure Element (2.9).

POLICY 1.4.4: Campus development which might increase amount of required impervious surface areas shall be approved on the provision of a drainage system that adheres to the conditions set forth in Policy 1.2.1 of the General Infrastructure Element (2.9).

OBJECTIVE 1.5: To ensure the availability of suitable land on campus for utility facilities required to support proposed on-campus development.

POLICY 1.5.1: Land shall be set aside in the northern portion of the academic core, between the 400 and 800 foot radii, for a future chiller plant station.

POLICY 1.5.2: Open utility corridors shall be maintained along the 800 foot radius (Apollo Circle) for future utility lines.

OBJECTIVE 1.6: To minimize off campus constraints which limit future development on campus (i.e. traffic, utilities) and minimize on campus conflicts with land uses within the context area.

POLICY 1.6.1: The University shall request signalization for all Alafaya Trail access roadways as they become warranted.

POLICY 1.6.2: The University shall coordinate with the state and local governments to assist in obtaining:

- a. The future widening of Alafaya Trail north from University Boulevard to at least Chapman Road in Seminole County.
- b. The four laning of SR 426 south of the Red Bug interchange and of Chapman Road up to Alafaya Trail.
- c. The implementation of an east-west collector road along the McCulloch Road alignment from Alafaya Trail west to Dean Road.
- d. The support of the Orlando-Orange County Expressway Authority to develop a reduced rate for students using the expressway system to access the campus.

POLICY 1.6.3: The University shall work with Orange County, Seminole County and the City of Oviedo in an effort to widen and surface Lockwood Road in Seminole County to Lake Pickett Road in Orange County in an effort to discourage campus cut through traffic from the McCulloch connector entrance to campus.

OBJECTIVE 1.7: To coordinate future land uses with the appropriate topography and soil conditions.

POLICY 1.7.1: Development shall not occur within the present Federal Emergency Management Assistance 100 year flood line.

POLICY 1.7.2: UCF shall maintain a data base of existing topographic and soil conditions, which shall be updated on a regular basis, and as additional data developed for future construction projects become available.

POLICY 1.7.3: Areas containing severe soil constraints such as those that are found in and around wetland sites and Lakes Lee and Claire shall remain undisturbed.

POLICY 1.7.4: Future development shall not alter the topographical features and surface water run-off patterns adapted by this Master Plan.

POLICY 1.7.5: Consistent with Policy 1.3.10 above, the University shall review future construction projects for consistency with existing topographic and soil data.

POLICY 1.7.6: UCF shall ensure that appropriate methods of controlling soil erosion and sedimentation to help minimize the destruction of soil resources be used during site development and use. Such methods shall include, but not be limited to:

- Phasing and limiting the removal of vegetation.
- Minimizing the amount of land area that is cleared.

- Limiting the amount of time bare soil is exposed to rainfall.
- Use of temporary ground cover on cleared areas if construction is not imminent.
- Special consideration shall be given to maintaining vegetative cover on areas of high soil erosion potential (i.e., steep or long slopes, banks of streams, stormwater conveyances, etc.).

POLICY 1.7.7: UCF shall require the integration of natural topographic and other physical features in project designs in order to develop the campus in harmony with its natural environment.

OBJECTIVE 1.8: To ensure that future campus development projects are consistent with regulations governing development in areas where historically or archaeologically significant resources may be present.

POLICY 1.8.1: In coordination with state and local historic preservation officials, UCF shall maintain an information file which identifies and locates properties under University ownership which may contain historic or archaeological resources which appear to qualify for inclusion in the National Register of Historic Places.

POLICY 1.8.2: The University shall consider the effect of any undertaking on any historic property that is included, or eligible for inclusion, in the National Register of Historic Places. The University shall afford the Department of State's Division of Historical Resources a reasonable opportunity to comment on such an undertaking.

POLICY 1.8.3: The University shall consult with the Department of State's Division of Historical Resources prior to any land clearing, ground disturbing, or rehabilitation activities which may disturb or otherwise affect any property which is included, or eligible for inclusion, in the National Register of Historic Places.

POLICY 1.8.4: Prior to a historic property being demolished or substantially altered in a manner that adversely affects its character, form, integrity, or archaeological value, the University shall consult with the Department of State's Division of Historical Resources to avoid or mitigate any adverse impacts, or to undertake any appropriate archaeological salvage excavation or recovery action.



2.5 ACADEMIC FACILITIES

GOAL 1: To provide modern, well-equipped academic facilities on campus sufficient to meet general requirements of state-of-the-art instruction in all of its various programs.

OBJECTIVE 1.1: To keep pace with demands for classrooms generated by enrollment growth.

POLICY 1.1.1: The University will seek to increase its classroom inventory by an average of at least 6,600 square feet per year and thereby achieve a minimum classroom increase of 66,000 square feet by the year 2004.

POLICY 1.1.2: The University will seek to increase the classroom inventory by 20,000 square feet beyond the increase required by enrollment growth.

POLICY 1.1.3: The University shall apply space use standards established in Rule Chapter 6A-2, F.A.C., to determine future classroom building programs and to plan the renovation of existing classrooms to optimize existing classroom space.

OBJECTIVE 1.2: To keep pace with demands for teaching laboratories generated by enrollment growth.

POLICY 1.2.1 The University will seek to increase its teaching laboratory inventory by approximately 60,000 square feet during the planning period.

POLICY 1.2.2: The University shall apply space use standards established in Rule Chapter 6A-2, F.A.C., to determine future teaching laboratory building programs and to plan the renovation of existing teaching laboratories to optimize existing laboratory space.

OBJECTIVE 1.3: To keep pace with demands for research laboratories generated by enrollment growth.

POLICY 1.3.1 The University will seek to increase its research laboratory inventory by an average of at least 2,000 square feet per year.

POLICY 1.3.2: The University shall apply space use standards established in Rule Chapter 6A-2, F.A.C., to determine future research laboratory building programs and to plan the renovation of existing teaching laboratories to optimize existing laboratory space.

OBJECTIVE 1.4: To establish the timing and phasing of development of future academic space on campus.

POLICY 1.4.1: Final authority for planning is vested in the University President, acting upon advice with the President's Advisory Staff (PAS). The PAS is comprised of the five divisional Vice Presidents, and the Faculty Senate President. The University President also receives input on all master planning issues from the Chair of the University Master Planning Committee (see Appendix A).

POLICY 1.4.2: The timing and phasing requirements for proposed academic facilities during the planning period are established in the Capital Improvements Element (see Table 2.14.1, page 2.14-6, and Table 2.14.2, pages 2.14-7 through 2.14-25).

OBJECTIVE 1.5: To set priorities for the development of future academic buildings.

POLICY 1.5.1: The priorities for proposed academic facilities during the planning period are established in the Capital Improvements Element (see Table 2.14.1, page 2.14-6, and Table 2.14.2, pages 2.14-7 through 2.14-25).

POLICY 1.5.2: The Capital Improvements Element shall be reviewed annually and amended as needed to reflect any changes to the timing and phasing requirements and priorities for the construction of academic facilities.

OBJECTIVE 1.6: To estimate the funding necessary for the development of future academic facilities.

POLICY 1.6.1: The University President, the President's Advisory Staff, and the University Master Plan Committee have estimated the funding necessary for the development of future buildings in the Capital Improvements Element. Requests for PECO funds for each of the major academic facilities cited in the Capital Improvement Plan generally range from \$12 million to \$18 million.

OBJECTIVE 1.7: To define appropriate locations for future academic buildings.

POLICY 1.7.1: As shown in the Future Land Use Element, sufficient space exists in the academic core to accommodate future academic buildings for the time horizon of this Master Plan. Future academic facilities shall be located as identified in Figure 5.1.

OBJECTIVE 1.8: To encourage energy efficiency and conservation techniques in all future facilities.

POLICY 1.8.1 New academic facilities shall meet the Florida Model Energy Code as established by the Florida Department of Community Affairs. New facilities shall also, where possible, have Variable Frequency Drive (VFD) and shall be connected to the Energy Management System (EMS) by fiber optics.

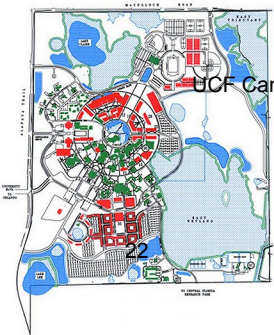
APPENDIX A: THE UNIVERSITY MASTER PLAN COMMITTEE

The University Master Plan Committee (UMPC) is comprised of representatives from a broad variety of constituencies, including five faculty by college, one faculty from either Biology or Environmental Engineering, one member from the Chair's Council, three administrators of whom two are chosen by the Vice President for Academic Affairs and one by the Vice President for Student Affairs, one student chosen by the Student Government Association, the Director of the Physical Plant, and the Director of Facilities Planning. In addition, the Director of Environmental Health and Safety and the Associate Director of Facilities Planning function as support staff to the UMPC.

The overall purpose of the UMPC is to recommend to the President of the University matters concerning the planning, development, and use of the University's physical resources. Among other matters, this includes the following goals:

- 1) To ensure that the Campus Facilities Master Plan and the Land Use Plan accommodate and support the academic plan of the University.
- 2) To develop and recommend policies for land use which can be used to guide the development of the Campus Facilities Master Plan and the Land Use Plan.
- 3) To guide the development of the Campus Facilities Master Plan and the Land Use Plan and to recommend these plans to the President or review and approval.
- 4) To review and make recommendations to the President on all changes of the Campus Facilities Master Plan and the Land Use Plan.

5) To monitor the execution of the Campus Facilities Master Plan and the Land Use Plan.



2.6 SUPPORT FACILITIES

GOAL 1: To continue to plan and develop support facilities required to meet the needs of the projected future student enrollment.

OBJECTIVE 1.1: To define appropriate locations for future support facilities including: administrative offices, physical plant facilities, auxiliary facilities, and intercollegiate, intramural and recreational athletic facilities.

POLICY 1.1.1: Future administrative offices shall continue to be placed in and around the academic core area within the Gemini Road loop.

POLICY 1.1.2: Physical plant facilities shall continue to be located on the southern portion of the campus. By the Fall of 1998, a small satellite physical plant facility shall be located in the northern half of the campus.

POLICY 1.1.3: Athletic fields and facilities presently located on the southern part of campus shall remain as they are until approximately academic year 2000 when housing development in this area should be necessary.

POLICY 1.1.4: Future athletic facilities shall be located on the northeastern part of campus adjacent to the Arena.

OBJECTIVE 1.2: Define the timing and phasing requirements for development of future support facilities.

POLICY 1.2.1: Visitor information centers will be placed at each existing entrance beginning in 2003 in the following order:

- Priority 1
at the University Boulevard entrance.
- Priority 2
at the Central Florida Boulevard extension entrance.
- Priority 3
at the McCulloch Road entrance.
- Priority 4
at the Centaurus Drive entrance.
- Priority 5
North Gemini Boulevard.

POLICY 1.2.2: The following priorities shall apply concerning future areas of student services:

- Priority 1
The present bookstore will be expanded in 1996.
- Priority 2
A recreational services building shall be built adjacent to the Academic Villages in 1999.
- Priority 3
The Student Health and Services Building will be expanded in 2001.

POLICY 1.2.3: Housing development slated for the south-central part of campus shall not occur until athletic and recreational facilities in the northeastern edge of the campus are completed. The following priorities shall apply concerning athletic facilities:

Priority 1

The construction of a baseball stadium in 1997.

Priority 2

The implementation of track stands and fields in 2000.

POLICY 1.2.4: The campus police facility shall be expanded in 2001.

POLICY 1.2.5: The present hazardous waste storage area shall be expanded in 2000.

POLICY 1.2.6: Allocation of funds for future support facilities shall follow the Capital Outlay Improvements plan and include the following:

PECO projects

The Police Facility Expansion - \$4,900,000

The Hazardous Waste Expansion - \$1,000,000

Entrance Information Centers - \$2,700,000

non-PECO projects

The Baseball Stadium - \$4,000,000

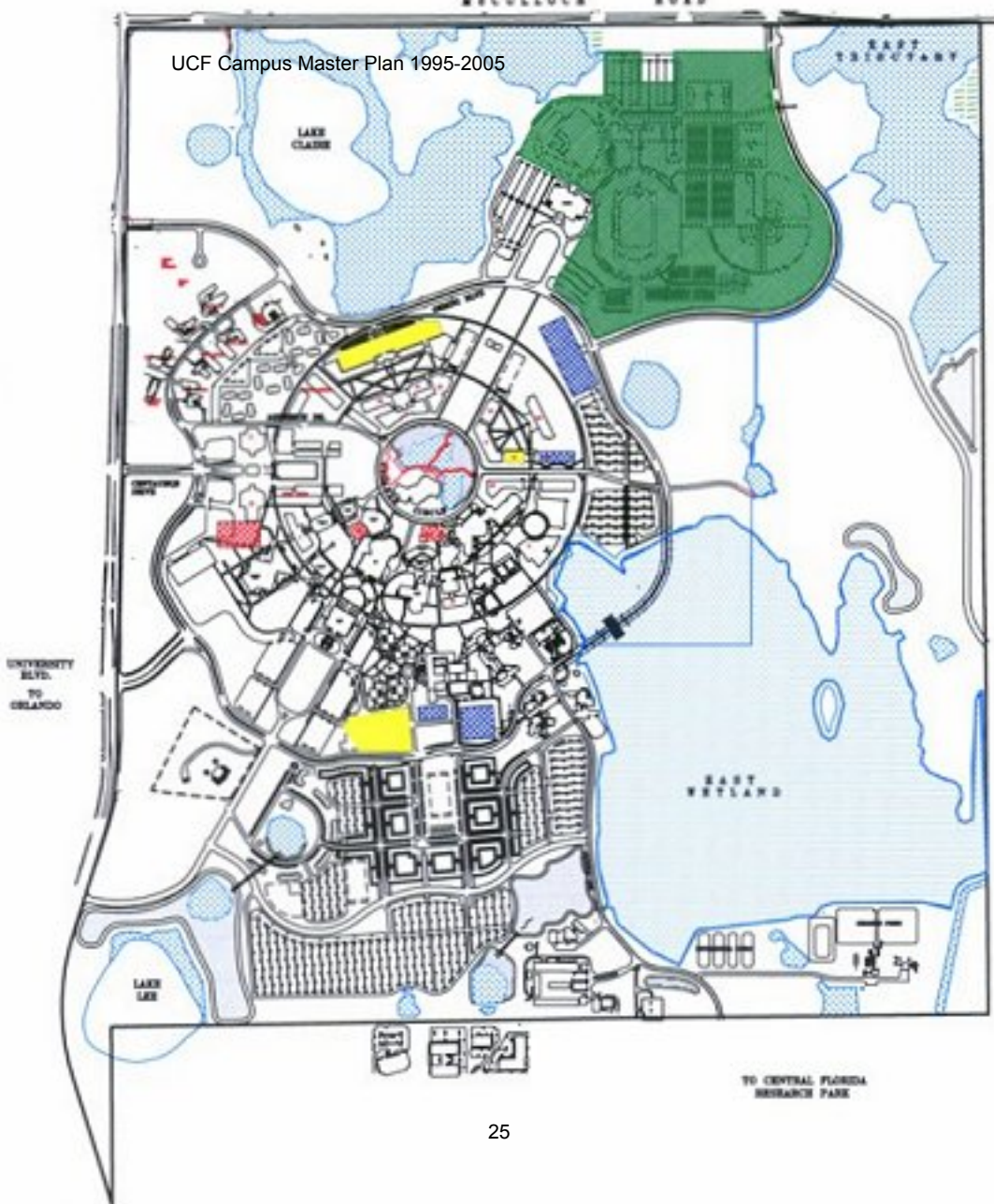
The Recreational Services Bldg. - \$10,000,000

The Student Health Services

Expansion - \$5,000,000

Track Stands and Fields - \$3,000,000

UCF Campus Master Plan 1995-2005



2.7 HOUSING

GOAL 1: To ensure the provision of public and private housing facilities on campus and within the host community adequate to meet the needs of the projected University enrollment during the planning period.

OBJECTIVE 1.1: To ensure the availability of affordable housing units and support facilities, on campus, that will meet the projected need for student housing.

POLICY 1.1.1: The university shall provide enough beds to house 15% of the projected student body, through the year 2005.

POLICY 1.1.2: Out of the total of students to be housed on campus 21% will be in married housing, 10% in Greek housing and 64% in undergraduate housing.

POLICY 1.1.3: For the life of this master plan all university owned housing shall be built on campus grounds.

POLICY 1.1.4: Parking ratios for student housing shall not be less than one space per 1.85 residents.

POLICY 1.1.5: Future housing sites shall be located on the south-central portion of campus and flanking both sides of the Central Florida Boulevard (see Figure 7-1).

POLICY 1.1.6: Support facilities for the south-central housing village shall occur around a centralized village green. These facilities shall also occur on the ground floor of their respective buildings and carry two or three floors of housing above them.

POLICY 1.1.7: Densities for housing areas shall be: 57.2 students per acre for the South-Central Housing Village, 75.33 students per acre for the Central Florida Blvd. housing area, and 20.1 students per acre around Scholarship Pond.

POLICY 1.1.8: Land for privately developed housing on campus shall be sub-leased for a 99 year term. This area shall be leased to requesting alumni associations that meet the requirements set forth by the Greek Park Committee and the Office of Student Affairs.

POLICY 1.1.9: The timing and phasing requirements and priorities for future on-campus student housing are identified in the Capital Improvements Element (see Table 2.14.2, pages 2.14-20 through 2.14-21, and page 2.14-23).

POLICY 1.1.10: Sanitary sewer, potable water, stormwater management and solid waste facilities shall be provided at established levels of service prior to occupancy of new housing facilities.

OBJECTIVE 1.2: To ensure the availability of off-campus housing and support facilities, within close proximity to the campus, which will meet the projected student enrollment.

POLICY 1.2.1: The university shall provide information on projected student enrollment to private developers and local governments to ensure that the off-campus housing stock and support facilities shall continue to meet the demands of the projected student body not to be housed on campus.

POLICY 1.2.2: The university shall continue to provide information to students concerning the availability of off-campus affordable housing within the immediate context area.

POLICY 1.2.3: The University shall establish, in conjunction with Orange County, a housing coordination committee for the purpose of:

- Monitoring the supply, costs and suitability of off-campus housing;
- Establish a registry of off-campus housing providers;
- Monitoring factors pertaining to safety, transit utilization, pedestrian access, etc.;
- Ensuring that new off-campus student-oriented housing opportunities are located within walking or bicycling distance to campus; and
- Ensuring that convenient service and shopping opportunities for students exist near off-campus student-oriented housing units.

OBJECTIVE 1.3: To prevent sub-standard housing or remodel it to an acceptable condition for student use.

POLICY 1.3.1: Preventive maintenance programs shall be established consistent with the policies below and with the Facilities Maintenance Element policies and reviewed on a periodic basis.

POLICY 1.3.2: Plumbing and HVAC units shall be inspected on a periodic basis, kept in reasonably good repair, and replaced as need and available funding dictate.

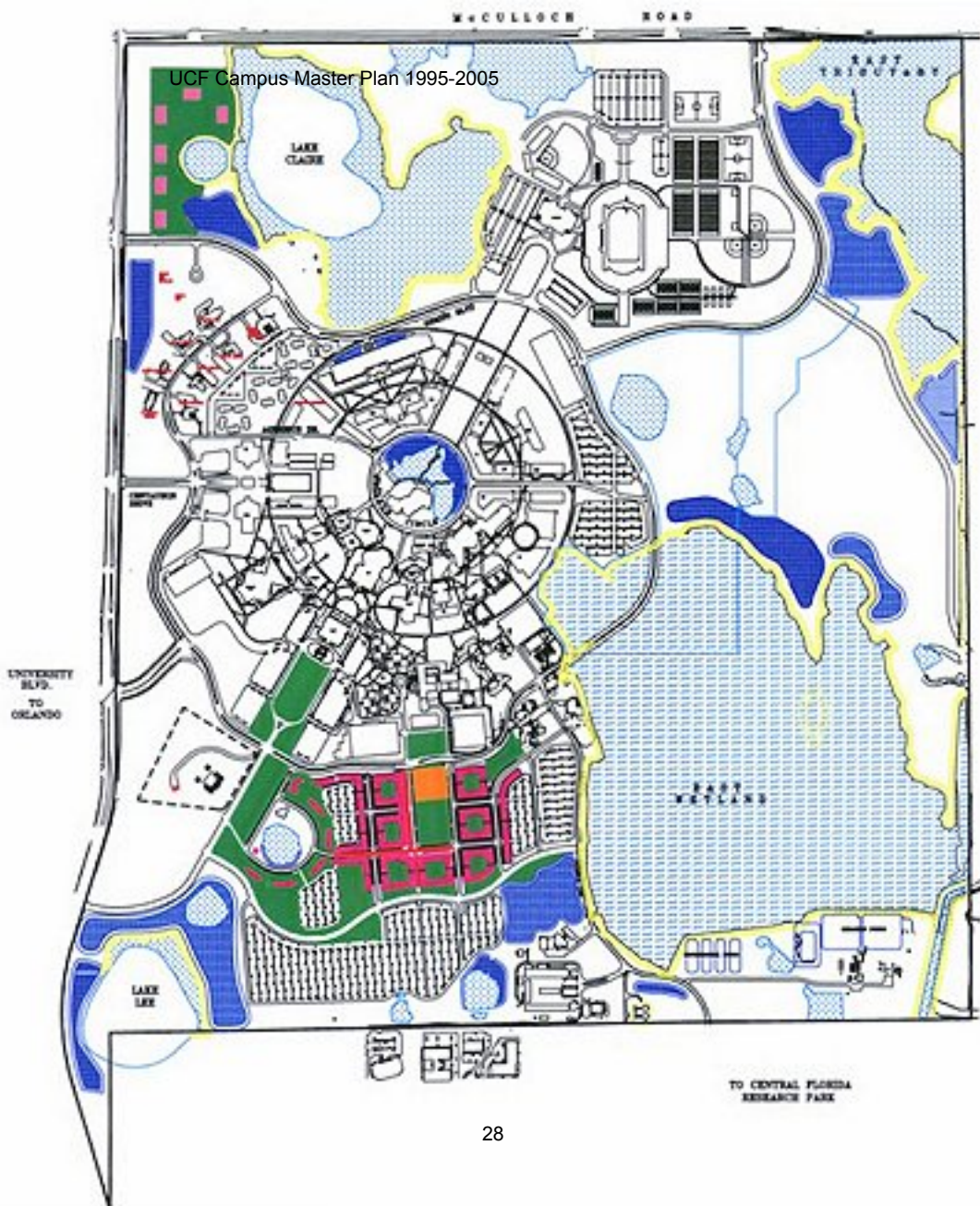
POLICY 1.3.3: On-campus housing, with the exception of Greek Park, shall be reviewed on a regular basis during the second quarter of every year in order to determine possible disrepair. These inspections shall be conducted by qualified University personnel.

POLICY 1.3.4: Routine maintenance shall be conducted on campus housing facilities exterior walls, windows and doors as needed. Routine roof maintenance shall be done every year.

POLICY 1.3.5: Campus housing interiors shall receive the following maintenance: walls shall be painted every 8 years or as needed, carpets (where applicable) shall be replaced every 7 years or as needed and ceilings shall be replaced every 10 years or as needed.

POLICY 1.3.6: The University shall identify ground level housing units that may be adapted for use by handicapped students. The adopted campus master plan shall be amended as needed to reflect the timing and phasing requirements and priorities for adapting these units.

UCF Campus Master Plan 1995-2005



2.8 RECREATION AND OPEN SPACE ELEMENT

GOAL 1: The University shall provide a variety of safe, efficient and enjoyable on-campus recreation and intercollegiate athletic facilities, physical laboratories and open space areas which promote the health, welfare and campus aesthetic ambience for the students, faculty and staff.

OBJECTIVE 1.1: The University shall rely upon a variety of public and private funding sources and programs to ensure the availability of recreation facilities, intercollegiate athletics and physical education laboratories for campus students and other user groups.

POLICY 1.1.1: The University's Recreational Services and Physical Education Department shall be responsible for the provision of adequate facilities for quality recreational and academic programs for all students of the University. The development of such programs and facilities shall be based upon existing and prospective student demand and user interest and the availability of funds from such sources as student and user fees.

POLICY 1.1.2: The University's Athletics Department shall be responsible for the provision of adequate facilities for participants in intercollegiate athletic programs, consistent with the adopted campus master plan. The need and phasing for specific facilities shall be based upon specific programming studies and the availability of funds from private and public sources such as spectator and user fees, alumni donations, etc.

POLICY 1.1.3: With regard to those students and faculty who reside off-campus, the University shall continue to rely upon the recreational facility planning and programming efforts undertaken by the host community and other local government jurisdictions to address their respective local and regional service population needs.

POLICY 1.1.4: As necessary, the University shall continue to rely upon service contracts and other contractual relationships with off-campus private and public facility providers to meet recreation, physical education or intercollegiate athletic needs.

OBJECTIVE 1.2: The University shall rely upon a variety of continuing in-house planning and facility development programs to ensure that recreation, intercollegiate athletic facilities, physical education laboratories and open space areas are adequately and efficiently provided.

POLICY 1.2.1: UCF shall continue to maintain and develop functional and aesthetically pleasing open spaces between structures and throughout the campus. This shall be accomplished through the application of building development and land use intensity guidelines consistent with the Urban Design and Future Land Use Elements and the open space preservation areas and policies as identified in the Conservation Element of this Plan.

POLICY 1.2.2: While future planning shall, in some cases, recognize the distinct need of Recreational Services, Intercollegiate Athletics, and the Physical Education programs for separate facilities, program representatives shall coordinate and attempt to share facilities wherever feasible.

POLICY 1.2.3: Future facilities in the north portion of campus will be developed on land identified in Figure 8-A.

POLICY 1.2.4: To the extent practical, future on-campus residence hall development in the south portion of campus shall occur in phases to coincide with the efficient relocation of recreational,

intercollegiate athletic and academic program laboratories to the northeast portion of campus. In order to implement this policy, the University's Office of Facilities Planning, Recreational Services, Intercollegiate Athletics and Physical Education Departments shall initiate a study to provide for the orderly phased relocation of field and building facilities to the northeast area of the campus. The adopted campus master plan shall be amended as needed to incorporate the results of this study.

POLICY 1.2.5: As the south campus housing development programs progress into the programming and design stage, the University's Office of Facilities Planning, Recreational Services, Intercollegiate Athletics and Physical Education Departments shall consider those facilities and programs which could be maintained in these areas as part of the housing area open space scheme.

POLICY 1.2.6: The timing and phasing requirements and priorities for improvements to athletic, recreation and open space facilities necessary to correct existing deficiencies and meet the future demands are identified in the Capital Improvements Element.

OBJECTIVE 1.3: The University shall promote unrestricted or managed public access to all campus recreation and athletic facilities or open space areas to the maximum extent feasible.

POLICY 1.3.1: Campus open space areas shall be developed and maintained as areas of unrestricted public access wherever feasible. Such provisions for access would include those special provisions or design criteria necessary under federal regulations to provide for disabled or handicapped persons. Access to certain areas of environmentally sensitive habitat may be restricted (on occasion) if it is determined by the University to be necessary in order to best protect the local animal and plant species.

POLICY 1.3.2: The University shall establish the priority use of campus athletic and recreational facilities for campus students, faculty and staff. Non-campus user populations of campus facilities will be accommodated to the extent that campus user demands are adequately met while allowing for reasonable maintenance and restoration periods for the particular facility.

OBJECTIVE 1.4: To protect and enhance present campus open spaces.

POLICY 1.4.1: The University shall protect from encroachment the existing conservation areas and maximize the retention of open space by strictly enforcing the future placement of buildings, parking facilities, infrastructure and other man-made improvements consistent with sites selected and adopted in the Future Land Use Element. The pattern of open spaces established in Figure 4-1 shall not be subject to encroachment without amending the adopted campus master plan.

POLICY 1.4.2: The University shall maintain densities and intensities for the development of the campus which maximize the retention of on-campus open space (see Future Land Use Element Policy 1.3.13).

POLICY 1.4.3: The University shall select sites for infrastructure and academic and support facilities which are designed to maximize the retention of campus open space.

2.9 GENERAL INFRASTRUCTURE ELEMENT

STORMWATER MANAGEMENT SUB-ELEMENT

GOAL 1: The future development of the UCF campus shall be based on the provision of an on-site stormwater management system which, to the extent possible, provides for adequate system capacity to protect campus populations and facilities while remaining sensitive to the natural functions and environmental attributes of the campus' native plant and animal communities.

OBJECTIVE 1.1: By 1997, UCF shall correct existing stormwater management deficiencies by reducing by 25% the pre-1994 levels of untreated impervious area stormwater runoff which outfall into the campus' wetland system.

POLICY 1.1.1: The University shall continue to implement the St. Johns River Water Management District (SJRWMD) approved UCF Stormwater Master Plan. The University's Facilities Planning and Physical Plant offices shall be responsible for the continued permitting of the stormwater management system. The plan shall continue to recognize a variety of implementation priorities to (1) eliminate existing system deficiencies, (2) maintain the existing system and (3) expand the system to accommodate new drainage needs.

POLICY 1.1.2: UCF shall design and construct stormwater management ponds as necessary during the planning period. The proposed location of these ponds is identified in Figure 9A. The timing and phasing requirements and priorities for these stormwater management improvements are identified in the Capital Improvements Element.

POLICY 1.1.3: In conjunction with the engineering and construction of Gemini Boulevard, as well as the development of other future campus buildings, the University shall pretreat approximately 25 acres of currently untreated impervious surface area runoff prior to discharge into campus receiving natural water bodies.

OBJECTIVE 1.2: Future development on the UCF campus shall occur based on a finding of adequate stormwater management system capacity to accommodate the proposed development.

POLICY 1.2.1: Any future development on the UCF campus which increases the amount of impervious surface area shall be approved per the provision of an on-site drainage system which serves the proposed development area under one or more of the following St. Johns River Water Management District (SJRWMD) permitted level of service standards:

- 1) Building finished floor elevations shall be a minimum 1' above the measured/calculated 100 floodwater elevation,
- 2) Stormwater quality treatment shall be provided at the greater of (a) 2.5" times the area of proposed impervious surface or (b) the calculated first 1" of runoff for the greater site,
- 3) Stormwater quantity treatment shall be based on treatment system capacity which detains the calculated stormwater volume for a 25 year/24 hour storm event.

POLICY 1.2.2: Any proposed increase in campus impervious surfaces shall be implemented only upon a finding that existing facility capacity is already on-line to accommodate the increased need, or that additional capacity will be funded and on-line at the time of need. In this respect, the

University shall maintain a record of existing and committed impervious surface areas relative to the agency approved permit maximums, as amended.

POLICY 1.2.3: Pursuant to the St. Johns River Water Management District (SJRWMD) regulatory permit requirements, the University's Stormwater Management Sub-Element shall continue to take into account those off-site stormwater flows which travel through the campus' wetlands and drainage basins.

POLICY 1.2.4: The University shall rely upon the stormwater system permitting criteria and processes of the SJRWMD to coordinate drainage issues with off-campus entities.

OBJECTIVE 1.3: Through the year 2005, UCF shall protect natural drainage system functions by (1) generally prohibiting development within the campus' existing jurisdictional wetland areas, (2) by maintaining a common pre-post development rate of stormwater discharge for newly developed areas and (3) by maintaining or reestablishing normal wetland hydroperiod elevations.

POLICY 1.3.1: The UCF Office of Facilities Planning office shall be charged with reviewing all proposed development projects to ensure that increases in impervious surface can be accommodated in the capacity of the existing and/or committed drainage system.

POLICY 1.3.2: It shall be the policy of UCF that no stormwater discharges may cause or contribute to a violation of water quality standards in waters of the State.

POLICY 1.3.3: UCF shall continue to mitigate University-generated stormwater and to minimize stormwater borne pollutants through the implementation of a system of Best Management Practices (BMPs), which includes, but is not limited to:

1. Incorporating stormwater management retention and detention features into the design of parks, trails, commons and open spaces, where such features do not detract from the recreational or aesthetic value of a site.
2. Use of slow release fertilizers and/or carefully managed fertilizer applications timed to ensure maximum root uptake and minimal surface water runoff or leaching to groundwater.
3. Educating maintenance personnel about the need to maintain motor vehicles to prevent the accumulation of oil, grease and other fluids on impervious surfaces, where they might be conveyed to surface and ground waters by runoff, and the need to regularly collect and properly dispose of yard debris.
4. Avoid the widespread application of broad spectrum pesticides by involving only purposeful and minimal application of pesticides, aimed at identified targeted species.
5. Coordinating pesticide application with irrigation practices to reduce runoff and leaching to groundwater.
6. Incorporating features into the design of fertilizer and pesticide storage, mixing and loading areas that are designed to prevent/minimize spillage.

POLICY 1.3.4: All stormwater management facilities shall be designed to retain on-site all volume of runoff generated by the University and shall not adversely impact adjacent property.

POTABLE WATER SUB-ELEMENT

GOAL 2: The future development of UCF shall be based on the provision of a campus potable water system which, to the extent possible, minimizes raw water consumption while providing for adequate system capacity to serve future campus population/facility needs.

OBJECTIVE 2.1: In order to reduce existing system deficiencies, UCF shall install one or more additional distribution line loops to improve the current estimated levels of line hydraulic flow capacity.

POLICY 2.1.1: The University shall design and construct potable water system improvements to (1) eliminate existing system deficiencies, (2) maintain/improve the existing system characteristics, and (3) expand the system to accommodate increased fire flow and/or consumptive needs.

POLICY 2.1.2: UCF shall increase its ability to provide potable water to the Southern portion of the campus and improve fire flow during the planning period. The proposed location of these improvements is identified in Figure 9B. The timing and phasing requirements and priorities for these potable water system improvements are identified in the Capital Improvements Element.

OBJECTIVE 2.2: Future development on the UCF campus shall meet adopted levels of service for potable water system fire flow and consumptive capacity to accommodate the proposed demand.

POLICY 2.2.1: Future development on the UCF campus which increases the demand for potable water shall be approved on the provision of a potable water distribution system which serves the proposed development under one or more of the following level of service standards:

- 1) Fire flows @ 20 pound PSI pressure for a 1 hour duration,
- 2) 15 gallons per day per FTE student, and/or
- 3) for buildings as follows:

- Classrooms - 39.2 GPD/1,000 GFA
- Office Buildings - 184 GPD/1,000 GFA
- Food Service Areas - 25 GPD/Dorm Resident
- Residences - 51 GPD/Dorm Resident w/o Food Service; 94 GPD/Fraternity/Sorority Resident
- Athletic Showers - 25,000 GPD for campus.

POLICY 2.2.2: Proposed increases in campus consumptive uses, whether residential or non-residential related, shall be approved only upon a finding that existing potable water treatment and distribution facility capacity is already on-line to accommodate the increased need, or that additional capacity will be funded and on-line at the forecast future time of need.

OBJECTIVE 2.3: Through the year 2005, UCF shall maintain the current quality and quantity of raw water available in the campus' potable water wellfield.

POLICY 2.3.1: The UCF potable water treatment and distribution system shall be primarily oriented to the needs of the campus and secondarily oriented to the needs of off-campus consumers. The University shall make every effort to cooperate with the St. Johns River Water Management District (SJRWMD) with respect to the consideration and implementation of existing and future regional ground water management strategies.

POLICY 2.3.2: UCF shall continue to require low flow and low flush plumbing appurtenances in all new building construction.

POLICY 2.3.3: The use of "xeric" landscaping techniques, including the maintenance or installation of selected vegetation species, low volume irrigation and compact hydrazone concepts, shall be a required element of all new building and ancillary facility construction through the year 2005.

POLICY 2.3.4: The University shall continue to implement and operate a treated effluent water system for irrigation, fire protection systems, and other non-potable uses. Seminole County has agreed to construct the necessary apparatus to increase the on-campus capacity to 2 million gallons per day. This shall decrease the portable water demand for irrigation and fire flow, while increasing the portable water availability to the campus.

SANITARY SEWER SUB-ELEMENT

GOAL 3: The future development of UCF shall be based on the provision of a campus wastewater collection and treatment system which adequately serves the future campus' population needs and protects the function and quality of maintained natural areas.

OBJECTIVE 3.1: The University shall continue to operate and maintain its existing wastewater and treatment system to meet all regulatory standards.

POLICY 3.1.1: The University shall design and construct sanitary sewer system improvements to (1) eliminate existing system deficiencies, (2) maintain the existing system and (3) expand the collection and treatment system to accommodate increased flow and/or wastewater needs.

POLICY 3.1.2: UCF shall increase the capacity of its sanitary sewer/wastewater system during the planning period. The proposed location of these improvements is identified in Figure 9C. The timing and phasing requirements and priorities for these sanitary sewer/wastewater system improvements are identified in the Capital Improvements Element.

OBJECTIVE 3.2: Future development on the UCF campus shall occur based on a finding of adequate collection and treatment capacity to accommodate the proposed demand.

POLICY 3.2.1: Future development on the UCF campus which increases the demand for wastewater collection and treatment shall be approved under the provision of a wastewater collection and treatment system which serves the proposed campus development area under one or more of the following level of service standards:

- 1) Adequate collection line flow capacity at 70 percent full flow rates,
- 2) 15 gallons per day per FTE student, and/or
- 3) For buildings as follows:
 - Classrooms - 39.2 GPD/1,000 GFA
 - Office Buildings - 184 GPD/1,000 GFA
 - Food Service Areas - 25 GPD/Dorm Resident

- Residencies - 51 GPD/Dorm Resident without Food Service; 94 GPD/Fraternity/Sorority Resident
- Athletic Showers - 25,000 GPD for campus

POLICY 3.2.2: The University's wastewater collection and treatment plant capacity shall recognize any existing contractual commitments with off-campus users. The University shall not enter into any new agreements with off-campus users beyond those under current contractual obligations.

POLICY 3.2.3: Proposed increases in campus generating uses, whether residential or non-residential related, shall be approved only upon a finding that existing wastewater collection and treatment plant capacity is already on-line to accommodate the increased need, or that additional capacity is funded and will be on-line at the forecast time of need. It shall be the responsibility of the University's Facilities Planning and Physical Plant offices to maintain a record of existing and committed project flows in order to determine that adequate system capacity is available for expanded use.

SOLID WASTE SUB-ELEMENT

GOAL 4: The future development of UCF shall be based on the provision of a solid waste on-campus collection and off-campus disposal system which adequately serves the future campus population needs and to the maximum extent feasible, protects the function and quality of the surrounding natural environment.

OBJECTIVE 4.1: By the year 2000, the University shall undertake the removal of debris from the old construction landfill in the southeast quadrant of the campus.

POLICY 4.1.1: The University shall establish as implementation priorities to (1) eliminate existing unregulated on-site disposal areas, (2) maintain the existing collection system and (3) expand the system to accommodate increased demand.

OBJECTIVE 4.2: Future development on the UCF campus shall occur based on a finding of adequate solid waste collection and disposal capacity to accommodate the proposed demand.

POLICY 4.2.1: Future development on the UCF campus which increases the demand for waste collection and disposal shall be approved under the provision of a solid waste collection and disposal system which serves the proposed development under one or more of the following level of service standards:

- 1) Twice weekly collection,
 - 2) 3.9 pounds per day per FTE student, and/or
 - 3) For buildings as follows:
- Classrooms - PPD/1,000 GFA
 - Office Buildings - PPD/1,000 GFA
 - Food Service Areas - PPD/Dorm Resident
 - Residences - PPD/Dorm Resident without Food; Service PPD/Fraternity/Sorority Resident

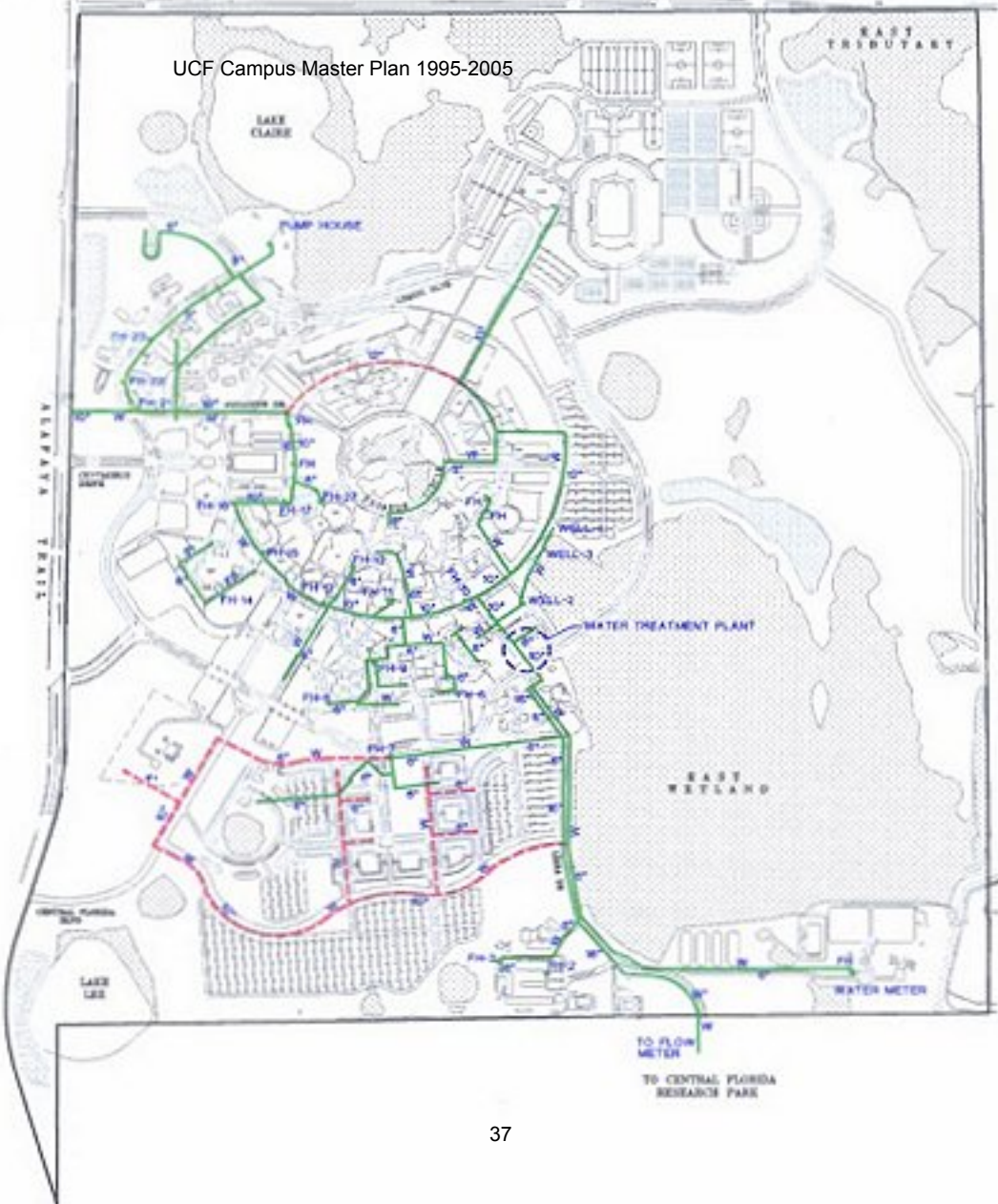
POLICY 4.2.2: As necessary and appropriate, UCF shall continue to participate in the regional solid waste management waste reduction and facility planning strategies undertaken by Orange County. Such activities will include continued recycling efforts for paper, glass, metal and plastics as currently collected on-campus.

POLICY 4.2.3: The University shall continue to rely upon private vendors to collect and convey the campus' solid waste to area disposal sites. As part of the campus development process, the University's Office of Facilities Planning or the Physical Plant shall be responsible for coordination with the waste vendor to establish the appropriate dumpster sizing and pick-up scheduling for new campus development areas. This coordination activity shall also include the appropriate planning actions for the siting and scheduling of recyclable materials dumpsters.

POLICY 4.2.4: UCF shall continue to rely upon Orange County's solid waste facility planning efforts for plant expansion.

POLICY 4.2.5: Proposed increases in campus generating uses - whether residential or non-residential related - shall be approved only upon a finding by the University that existing solid waste disposal capacity is already on-line to accommodate the increased need, or that additional capacity will be funded and on-line at the forecasted future time of need. The University offices of Facilities Planning and Physical Plant shall be responsible for the review of all development proposals and perform the appropriate periodic coordination efforts with Orange County to determine that solid waste capacity is available.

UCF Campus Master Plan 1995-2005



UCF Campus Master Plan 1995-2005



2.10 UTILITIES ELEMENT

CHILLED WATER SUB-ELEMENT

GOAL 1: The future development of UCF shall be based on the provision of an on campus chilled water generation and distribution system which adequately serves the future campus population needs.

OBJECTIVE 1.1.1: The University shall conform to all EPA requirements to eliminate CFC refrigerants in its existing chilled water plant.

POLICY 1.1.1: The University shall convert Chillers Nos. 1-4 to a non-CFC refrigerant by 1999. This activity will commence with the conversion of Chiller No 1 in the 1995/96 winter season, with Chillers Nos. 2, 3 and 4 (based on decreasing size) converted on a successive, annual basis.

OBJECTIVE 1.2: Future development on the UCF campus shall occur based on a determination that there is an adequate chilled water generation and distribution system capacity to accommodate the proposed demand.

POLICY 1.2.1: Future development on the UCF campus which increases the demand for chilled water generation and distribution capacity shall be approved under the provision of a system which serves the proposed development under the following level of service standards:

- 1) Under the existing campus wide average service conditions, one (1) ton of plant capacity per 250 square of building floor area, or
- 2) A finding that proposed additional building design loads may be accommodated under the available generation and distribution system parameters.

POLICY 1.2.2: The University shall establish as overall implementation priorities the following: (1) continued servicing of the existing campus built areas, (2) the maintenance of 1,000 tons of residual plant capacity for emergency back-up purposes, (3) expansion of the existing plant generation and distribution system capacity in order to more efficiently serve existing demand, (4) maintenance of sufficient capacity to provide for the orderly and balanced refrigerant changeover and (5) expansion of a plant and distribution system capacity to serve new development areas/buildings.

POLICY 1.2.3: UCF shall be solely responsible for the provision, maintenance and continued operation of a chilled water system to serve only the campus building needs.

POLICY 1.2.4: The University shall rely upon the land use and building programs identified in the Comprehensive Master Plan, and on-going implementing Capital Plans/Programs, to stage the construction of an expanded chilled water system, such that the expanded system is on-line at the time of the projected increased demand. This process shall be the shared responsibility of the Facilities Planning Office, the Physical Plant and the University's Administrator of Capital Funding. It shall be the responsibility of the Physical Plant to determine that sufficient plant and distribution system capacity is/will be available at such time any new building is proposed for construction.

POLICY 1.2.5: The University shall fund the engineering and construction of a new satellite chiller plant to come on-line by 1996.

POLICY 1.2.6: The University shall implement improvements to the chilled water distribution system as identified in Figure 10A. The timing and phasing requirements and priorities for the

provision of future chilled water system improvements are identified in the Capital Improvements Element.

POLICY 1.2.7: Based on a balancing of other competing objectives, the University shall continue to subscribe to a variety of active and passive energy management/conservation strategies. As currently practiced, such strategies may include building site orientation design, stringent building insulation standards and, as appropriate, zonal airflow systems within buildings. The responsibility for administering these strategies shall fall to the Office of Facilities Planning and the Physical Plant.

POLICY 1.2.8: The University shall continue to use treated wastewater effluent as a source of make-up water for the UCF Chiller Plant(s).

ELECTRICAL POWER AND OTHER FUELS SUB-ELEMENT

GOAL 2: The future development of UCF shall be based on the provision of an on campus electrical power and natural gas distribution system which adequately serves the future campus population needs.

OBJECTIVE 2.1: Through ongoing inspection and coordination efforts with service providers, the University shall continue to identify and resolve any deficiencies in the servicing of electrical and natural gas power distribution systems.

POLICY 2.1.1: The University shall coordinate with Florida Power Corporation, Peoples Gas System or any successors concerning with regard to the replacement of outmoded or deteriorating service lines or facilities. At this time, the University's priority replacements needs include the primary electrical feeder line which parallels Libra Drive from the substation north to Gemini Boulevard.

OBJECTIVE 2.2: The University shall ensure the provision of adequate electrical and natural gas services through the continued internal funding and coordination with external service providers.

POLICY 2.2.1: The University's Office of Facilities Planning and the Physical Plant shall be responsible for the continued coordination of power supply services with Florida Power Corporation and Peoples Gas System. To the extent feasible, it shall be the responsibility of these offices to determine that adequate plant and distribution system capacity is available to serve expanded needs and to promptly avail the University funding officer of any needs for UCF funds for maintenance, expansion or replacement.

POLICY 2.2.2: Future development on the UCF campus which increases the demand for electrical power and/or natural gas or other fuels shall be approved under the following level of service standards:

- 1) 5.25 Average Daily KWH electricity per FTE Student
- 2) 6.1 Peak Daily KWH electricity per FTE Student

POLICY 2.2.3: The University shall establish as overall implementation priorities the following: (1) continued servicing of the existing campus built areas, (2) maintenance of UCF owned power manhole and conduit system, (3) expansion of the existing line distribution system capacity in order to more efficiently serve existing demand and (4) expansion of the distribution system capacity, including the designation of future transformer sites to serve new development areas/buildings.

POLICY 2.2.4: The University shall rely upon the land use and building programs identified in the Comprehensive Master Plan, and those ongoing implementing Capital Plans/Programs, to coordinate a staged expanded electrical system such the expanded system is on-line at the time of the projected increased demand. This process shall be the shared responsibility of the Office of Facilities Planning, the Physical Plant and the University's Administrator of capital funding programs. It shall be the responsibility of the Physical Plant office to determine that sufficient plant and distribution system capacity is/will be available at such time any new building is proposed for construction.

POLICY 2.2.5: The University shall implement improvements to the electrical power and natural gas distribution system as identified in Figures 10B and 10C. The timing and phasing requirements and priorities for the provision of future electrical power and natural gas distribution system improvements are identified in the Capital Improvements Element.

POLICY 2.2.6: Based on a balancing of other competing objectives and policies, the University shall, to the maximum extent feasible, continue to administer a variety of active and passive energy conservation strategies. As currently practiced, these strategies include appropriate building site design techniques, stringent building insulation standards and, as appropriate, zonal airflow and lighting systems. The responsibility for administering these strategies shall fall to the Facilities Planning and Physical Plant offices.

POLICY 2.2.7: The University shall install energy efficient equipment (i.e., electronic ballasts for fluorescent lighting fixtures, octron T-8 lamps, etc.) in new buildings and when retrofitting existing buildings.

TELECOMMUNICATIONS SUB-ELEMENT

GOAL 3: The future development of UCF shall be based on the provision of an on campus telecommunications system which adequately serves the future campus population needs.

OBJECTIVE 3.1: Through ongoing inspection and coordination efforts with service providers, the University shall continue to identify and resolve any deficiencies in the servicing of telecommunications systems.

POLICY 3.1.1: The University shall continue to identify and upgrade or otherwise replace existing conduits and telecommunications lines, as identified in Figure 10D.

POLICY 3.1.2: The timing and phasing requirements and priorities for the provision of future telecommunication system improvements are identified in the Capital Improvements Element.

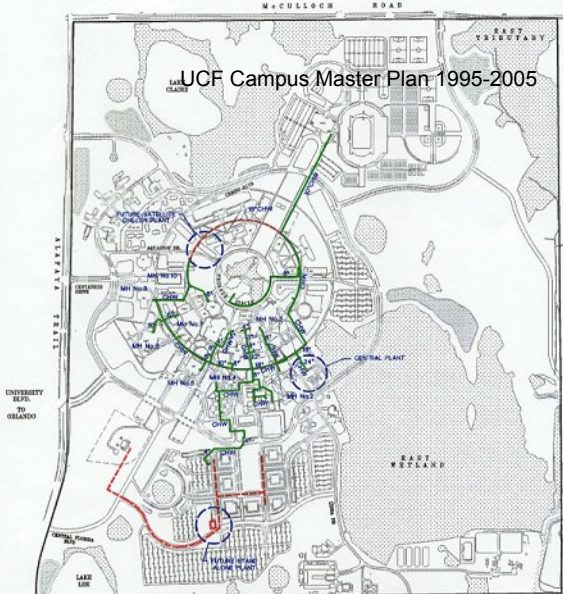
OBJECTIVE 3.2: The University shall ensure the provision of adequate telecommunications facility services through continued internal funding of improvements and coordination with external service providers.

POLICY 3.2.1: The University's Offices of Computer Services and Telecommunications shall be responsible for the continued coordination of telecommunications services with off-site vendors and user groups. To the extent feasible, it shall be the responsibility of this office, the Facilities Planning Office and the Physical Plant to jointly determine that service capacity is available to serve expanded needs and to promptly avail the University funding officer of any needs for UCF funds for maintenance, expansion or replacement of such systems.

POLICY 3.2.2: The University shall establish as overall implementation priorities the following: (1) continued servicing of the existing campus built areas, (2) maintenance of the UCF owned power manhole and conduit system, (3) expansion of the existing line distribution system capacity

in order to more efficiently serve existing demand and (4) expansion of the distribution system capacity, including the designation of future demarcation sites to link new development areas/buildings with on and off-campus systems.

POLICY 3.2.3: The University shall rely upon the land use and building programs identified in the Comprehensive Master Plan, and ongoing implementing Capital Plans/Programs, to coordinate a staged expanded telecommunications system such the expanded system is on-line at the time of the projected increased demand. This process shall be the shared responsibility of the Computer Services and TeleCommunications Office, the Facilities Planning Office, the Physical Plant and the University's Administrator of Capital Funding Programs.



UCF Campus Master Plan 1995-2005

FIGURE NUMBER 10-A FUTURE CHILLED WATER SYSTEM

LEGEND:

- CHIL — EXISTING CHILLED WATER LINE
- CHIL — FUTURE CHILLED WATER LINE

SOURCE:
IVEY, HARRIS & WALLS, INC.
UNIVERSITY OF CENTRAL FLORIDA



COMPREHENSIVE MASTER PLAN
UNIVERSITY OF
CENTRAL FLORIDA
ORLANDO, FLORIDA

DATE: 8-15-1995



UCF Campus Master Plan 1995-2005

CLARE

EAST
TRIBUTARY

ALAPPA TRAIL

UNIVERSITY
BLVD.
TO
ORLANDOCENTRAL FLORIDA
PARKLAKE
LUREEAST
WETLANDUCF POWER
SUB-STATIONTO CENTRAL FLORIDA
PARK

44

FIGURE NUMBER 10-B

FUTURE ELECTRICAL
POWER SYSTEM

EXISTING ELECTRICAL FACILITIES

LEGEND:

-  FEEDER CABLE
-  THREE PHASE PRIMARY
-  SINGLE PHASE PRIMARY
-  FEEDER 1016
-  FEEDER 1014
-  OPEN POINT
-  OPEN SWITCH
-  CLOSED SWITCH

GENERALIZED ROUTING OF FUTURE
PRIMARY ELECTRICAL SERVICE LINES:
DETAILED ROUTING & SERVICES PROVISIONS
TO BE DETERMINED BY FPC.

SOURCE:

FLORIDA POWER CORPORATION (1994)
IVEY, HARRIS & WALLS, INC.



COMPREHENSIVE MASTER PLAN
UNIVERSITY OF
CENTRAL FLORIDA
ORLANDO, FLORIDA

DATE 8-15-1995



MCCULLOCH ROA



LEGEND:

— GAS — EXISTING NATURAL GAS LINE
- - - GAS - - - FUTURE NATURAL GAS LINE

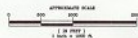
SOURCE:

PEOPLE'S GAS SYSTEM
UNIVERSITY OF CENTRAL FLORIDA
IVEY, HARRIS & WALLS, INC.



COMPREHENSIVE MASTER PLAN
UNIVERSITY OF
CENTRAL FLORIDA
ORLANDO, FLORIDA

DATE 8-15-1995



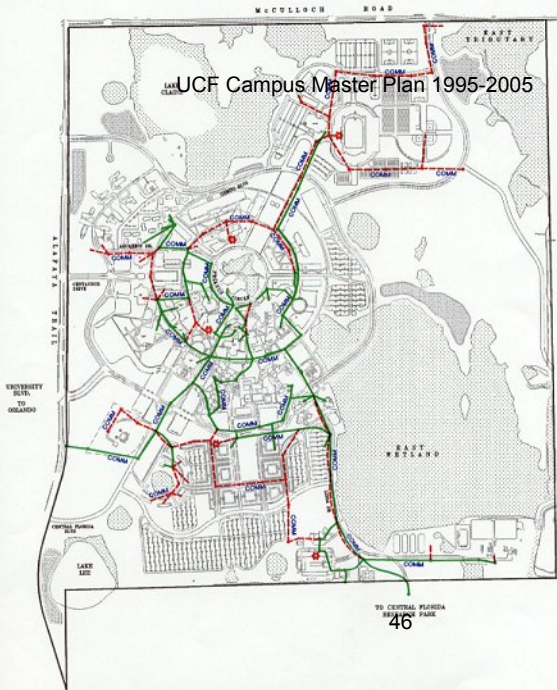


FIGURE NUMBER 10-D
**FUTURE
 TELECOMMUNICATIONS**
 LEGEND:

- COMM — EXIST. TELECOMMUNICATION LINE
- COMM — FUTURE TELECOMMUNICATION LINE
- EXISTING/FUTURE SERVICE NODE

SOURCE:

IVEY, HARRIS & WALLS, INC.
 UNIVERSITY OF CENTRAL FLORIDA



COMPREHENSIVE MASTER PLAN
**UNIVERSITY OF
 CENTRAL FLORIDA**
 ORLANDO, FLORIDA

DATE 8-15-1995



2.11 TRANSPORTATION ELEMENT

TRANSIT, CIRCULATION AND PARKING SUB-ELEMENT

GOAL 1: It is the goal of the University to plan for future motorized and non-motorized traffic circulation systems to ensure the provision of adequate transit, circulation and parking facilities to meet future University needs.

OBJECTIVE 1.1: The University shall facilitate safe and efficient multi-modal access to, from and within the UCF campus.

POLICY 1.1.1: The University shall maintain a minimum level of service of "E" for all campus roadways.

POLICY 1.1.2: The University shall maximize accessibility to the external roadway system by realigning and extending Central Florida Boulevard to the south with a fully directional intersection and providing northern access to the campus through the implementation of an East Gemini Boulevard to McCulloch Road connection.

POLICY 1.1.3: The University shall improve the internal circulation of the University by completing Gemini Boulevard to the east along with the four laning of Gemini from Libra Drive to the Wayne Densch Sports Center; and by realigning South Gemini Boulevard in the vicinity of Central Florida Boulevard to eliminate vehicle-pedestrian conflicts. Any impacts to designated environmentally sensitive areas shall be mitigated consistent with Conservation Element policies 1.2.8 and 1.4.5.

POLICY 1.1.4: The University shall control of access to Gemini Boulevard by limiting direct parking and building drive access, encouraging the use of frontage roads, and attempting to consolidate existing access points.

POLICY 1.1.5: The University shall coordinate with Orange and Seminole counties and the Florida Department of Transportation, as appropriate, to ensure that signalization is available when needed to support roadway improvements.

POLICY 1.1.6: The University shall pursue the restriction of general vehicular access to the campus core, as defined by the 1,200-foot ring of Apollo Circle. Access to Aquarius Drive at the perimeter of Mercury Circle and Pegasus Circle shall be restricted to campus transit vehicles and necessary service vehicles.

POLICY 1.1.7: The University shall attempt to minimize campus vehicular and non-vehicular conflicts by appropriately locating the Multi-Modal terminal access near a main campus entrance off of Alafaya Trail within the Gemini Boulevard loop.

POLICY 1.1.8: The University shall include provisions for bicycle lanes on newly constructed or improved existing campus roadways. Standards for bicycle racks and for their placement on campus are established in Landscape Design Element Policy 1.1.13.

POLICY 1.1.9: A future south campus access road connecting Central Florida Boulevard to Libra Drive shall be constructed as parking and south central housing access concurrent with south housing and parking construction.

POLICY 1.1.10: The University supports the expedited widening of Alafaya Trail (SR 434) north from University Boulevard to at least Chapman Road in Seminole County. As a long-term project,

the University supports the direct connection to the GreeneWay, Red Bug Road, SR 426 interchange via Mitchell-Hammock Road.

POLICY 1.1.11: As a companion project serving as an interim facility in lieu of Policy 1.1.11, the University supports the four laning of SR 426 south of the Red Bug Road interchange.

POLICY 1.1.12: The University supports the development of an east-west collector road along the McCulloch Road alignment from Alafaya Trail (SR 434) west to Dean Road.

POLICY 1.1.13: The University supports Orange County, Seminole County, and the City of Oviedo to surface and widen old Lockwood Road (Tanner Road) east of the campus from Lockwood Boulevard in Seminole County to Lake Pickett Road in Orange County in an effort to minimize campus cut-through traffic from the McCulloch connector entrance to UCF.

POLICY 1.1.14: In anticipation of the need for additional roadway capacity by the year 2000, the University shall coordinate with the Florida Department of Transportation, the Orange County and Seminole County Planning Departments, and the Orlando Metropolitan Planning Organization (MPO) to evaluate strategies and improvements to meet the projected need for additional east-west access to the UCF campus. The adopted campus master plan shall be amended as needed to incorporate the results and of this evaluation.

POLICY 1.1.15: The University shall coordinate with the Florida Department of Transportation and the Orange County and Seminole County Planning Departments to evaluate strategies and improvements to develop a new major entrance/gateway to the southeastern portion of the campus. The new entrance would be designed to alleviate traffic on SR 50 and South Alafaya Trail. The adopted campus master plan shall be emended as needed to incorporate the results and of this evaluation.

POLICY 1.1.16: The proposed location of the proposed traffic circulation improvements is identified in Figure 11-1. The timing and phasing requirements and priorities for additional parking are identified in the Capital Improvements Element.

OBJECTIVE 1.2: The University shall provide safe, adequate, accessible and effective campus parking facilities.

POLICY 1.2.1: The University shall provide sufficient campus parking throughout the planning period, maintaining a desired student to parking space ratio.

POLICY 1.2.2: The University shall provide an additional 2,500 parking spaces during the planning period. The proposed location of additional parking is identified in Figure 11-1. The timing and phasing requirements and priorities for additional parking are identified in the Capital Improvements Element.

POLICY 1.2.3: The University shall establish and maintain sufficient visitor parking at strategic campus locations.

POLICY 1.2.4: The University shall achieve the desired parking ratio by implementing Transportation Demand Management (TDM) strategies to provide viable parking alternatives.

POLICY 1.2.5: By commencement of Fall semester, 1995, the University shall provide Transportation Demand Management (TDM) student information brochures and extra incentives for reducing on campus parking demand.

POLICY 1.2.6: The University shall encourage transit usage and emphasize bicycle and pedestrian modes as a means of travel from parking lots to other on-campus destinations.

POLICY 1.2.7: The University shall provide parking facilities which maintain effective and energy efficient lighting at all facilities used after dusk and landscaping shall be placed with a strong emphasis on safety and security.

POLICY 1.2.8: Within one year after plan adoption, the University shall establish parking design standards and criteria regarding access, circulation, green space and landscaping, lighting, security, and provisions for associated stormwater management to be implemented for future facilities. The adopted campus master plan shall be amended to incorporate these standards and criteria.

POLICY 1.2.9: Replacement parking budgets shall be an integral part of new construction budgets if the new construction displaces existing parking spaces. Funds allocated for replacement parking shall be based on a percentage of the total construction costs.

OBJECTIVE 1.3: The University shall implement measures to improve transit service to, from and within the campus.

POLICY 1.3.1: The University shall designate and implement a campus intermodal transportation terminal. The proposed location of this terminal is identified in Figure 11-1. The timing and phasing requirements and priorities for this terminal are identified in the Capital Improvements Element.

POLICY 1.3.2: The University, in conjunction with area public transportation systems and organizations, shall expand campus transit service to, from, and within the University to achieve a transit mode share of 5 percent of trips by transit or an equivalent share of trips reduced by ridesharing by the year 2005.

POLICY 1.3.3: The University, in conjunction with area public transportation systems and organizations, shall identify residential concentrations of students as well as transit routes used most by campus patrons and increase transit service on these routes by decreasing bus headways or developing additional new routes.

POLICY 1.3.4: The University, in conjunction with area public transportation systems and organizations, shall evaluate the feasibility of providing bicycle racks on transit vehicles serving the University from off-campus locations. Standards for bicycle racks and for their placement on campus are established in Landscape Design Element Policy 1.1.13.

POLICY 1.3.5: The University shall inventory and evaluate the positioning of all transit stop locations. This inventory will include the availability of seating, shelter, lighting, amenities, etc.

POLICY 1.3.6: The University shall periodically update data regarding all transit, bicycle, and pedestrian services with the student commuter needs survey as outlined in Policy 1.4.2.

OBJECTIVE 1.4: To encourage the use of alternative modes of transportation and reduce dependence on the personal automobile.

POLICY 1.4.1: UCF shall continue active participation in the University/Alafaya Corridor Transportation Association (UACTA) to promote transportation demand management techniques both on campus and in the context area around campus.

POLICY 1.4.2: Within one year after plan adoption, the University, in conjunction with UACTA, shall survey the UCF students, faculty, and staff to identify commuter characteristics and travel patterns such as auto ownership, socio-economics, transit usage, parking preference, demographics, mode choice reasoning, origin-destination, etc. Furthermore, the survey will determine what TDM strategies, if implemented, will be most applicable to the students, faculty, and staff.

POLICY 1.4.3: Based upon the survey results, the University shall implement, with the assistance of UACTA, TDM strategies identified in the above survey. These strategies shall include, but shall not be limited to:

- Improved utilization of public or University provided transit services;
- Improved pedestrian and non-vehicular facilities;
- Increasing the number of students living on campus;
- Academic scheduling modifications; and
- Operational improvements to the on-campus roadway system.

Within one year of implementing TDM strategies, the University shall again survey the students, faculty, and staff to determine any shifts in commute patterns. The adopted master plan shall be amended as needed to reflect the results of this survey.

POLICY 1.4.4: The University shall utilize increased parking fee structures to encourage higher vehicle occupancy ratio and use of alternative transportation modes.

POLICY 1.4.5: The University shall establish a high-occupancy vehicle parking incentive program which provides preferential parking treatment for automobiles carrying three or more persons.

POLICY 1.4.6: The University shall coordinate with the Orange County and Seminole County Planning Departments to establish campus-wide ridesharing and carpool programs for UCF students, faculty and staff.

POLICY 1.4.7: The University shall evaluate the potential uses of distance learning as a technique to reduce the need for students to travel to the University.

POLICY 1.4.8: The University will continue to refine class scheduling as a method of mitigating peak-hour traffic conditions and to maximize utilization of existing transportation infrastructure investment.

POLICY 1.4.9: The University shall coordinate with the Orange County and Seminole County Planning Departments to evaluate other options and strategies for reducing the dependence on the personal automobile, such as park and ride operations from locations off-campus, and special UCF feeder bus services. If any of these proves to be economically feasible and practical, the University shall amend the adopted campus master plan as needed to incorporate these strategies into the overall transportation plan.

OBJECTIVE 1.5: The University shall annually inventory and analyze parking and roadway traffic demand and operating conditions.

POLICY 1.5.1: Parking utilization and parking space ratios shall be annually monitored by the University to determine that adequate parking is being provided.

POLICY 1.5.2: The University shall annually collect and monitor traffic data on campus roadways and those roadways within the UCF context area.

POLICY 1.5.3: A system for recording accident and safety related data on campus by specific location and incident type shall be developed and maintained by the University by spring semester 1995. This information shall serve as a basis for identifying improvements necessary to reduce the number of accidents and improve campus safety.

OBJECTIVE 1.6: To ensure the coordination of the University's transportation system improvements with the master plans and transportation improvement programs of UCF, the host community, and affected local governments.

POLICY 1.6.1: The University Master Planning Committee and Office of Facilities Planning, together with appropriate faculty and administration, shall review all campus development plans for compliance with the Master Plan's criteria for parking, circulation, and access as described in the Transportation Element.

POLICY 1.6.2: The University shall coordinate with Orange County and Seminole County concerning campus infrastructure development by submitting notice of development for review by the host community, as described in the Intergovernmental Coordination Element policies for reciprocal review (Objective 1.2).

POLICY 1.6.3: The prioritization and timing of on-campus transportation infrastructure improvements shall be concurrent with the construction of campus land uses which impact existing and proposed campus infrastructure. All necessary on-campus roadways and parking facilities required to support the Campus Master Plan development program must be in place and operating with available capacity to accommodate new development impacts without degradation in operations below the minimum levels of service, as defined and adopted by the University.

Appendix A

UCF Campus Roadway Levels of Service Capacities Average Daily Traffic

No. Lanes	Level of Service (for NON-STATE other signalized roadways ¹)				
	A	B	C	D	E
2L	N/A	N/A	5200	10300	11700
4LD	N/A	N/A	11500	22800	25300
6LD	N/A	N/A	17250	34200	37950

(1) Florida Level of Service Standards and Guidelines Manual,
June 1992

PEDESTRIAN AND NON-VEHICULAR CIRCULATION SUB-ELEMENT

GOAL 1: To create logical patterns of pedestrian and non-vehicular circulation systems which enhance the overall urban and social-academic quality of the campus.

OBJECTIVE 1.1: To coordinate pedestrian and non-vehicular circulation systems with those to be developed by the host community in its local comprehensive plan, bicycle plans or traffic circulation plans.

POLICY 1.1.1: The University shall work with the host community to coordinate the implementation of sidewalks, bicycle paths and pedestrian crosswalks along all vehicular corridors adjacent or leading into and out of campus.

POLICY 1.1.2: The University shall coordinate with Orange and Seminole counties and the Florida Department of Transportation, as appropriate, to ensure that signalization is available when needed to facilitate the movement and safety of pedestrian and non-vehicular traffic.

OBJECTIVE 1.2: To ensure that future pedestrian and non-vehicular circulation facilities be coordinated with the Campus Safety Plan.

POLICY 1.2.1: The Offices of the Facilities Planning, Physical Plant, Environmental Health & Safety and the Chief of Campus Police shall meet on a regular basis to ensure that provisions concerning pedestrian and non-vehicular circulation facilities are incorporated into the Campus Safety Plan and associated programs.

POLICY 1.2.2: The Offices of the Facilities Planning, Physical Plant, Environmental Health & Safety and the Chief of Campus Police shall coordinate the development of programs and procedures to improve the safety of persons using pedestrian and non-vehicular facilities on campus. The adopted campus master plan shall be amended as needed to incorporate these new and revised programs and procedures.

OBJECTIVE 1.3: To coordinate the locations for additional lighting along pedestrian and non-vehicular circulation routes with recommendations contained within the Campus Safety Plan.

POLICY 1.3.1: The University shall include recommendations for type and location of future lighting requirements into the part of the Campus Safety Programs which addresses pedestrian and non-vehicular circulation systems.

POLICY 1.3.2: The Director of Facilities Planning and of the Chief of Campus Police shall review all future plans for lighting along proposed pedestrian and non-vehicular systems to ensure compliance with both the Campus Safety Plan and the adopted UCF Architectural Design Guidelines.

POLICY 1.3.3: Appropriate lighting systems shall be constructed concurrent with pedestrian and non-vehicular circulation systems.

OBJECTIVE 1.4: To ensure that the future provision of pedestrian and non-vehicular circulation systems will meet the needs of the University and the projected student enrollment.

POLICY 1.4.1: The following order of priorities shall be applied to the future development of pedestrian paths and non-vehicular systems:

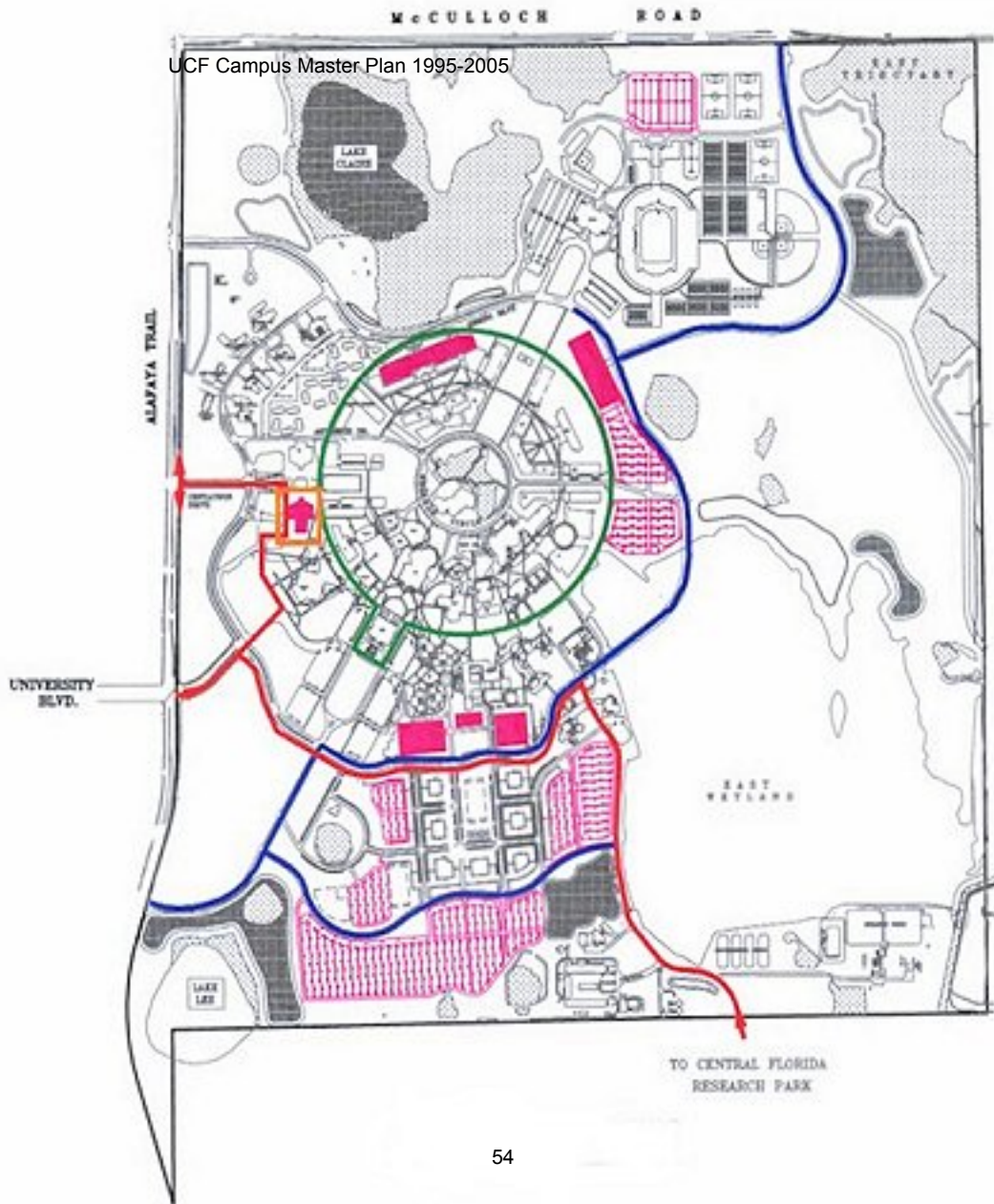
- Priority 1
The completion of the 800 foot radius Mercury Ring.
- Priority 2
The completion of the 1200 foot radius Apollo Ring.

- Priority 3
The construction of sidewalks and bicycle paths along both sides of the completed Gemini Boulevard Loop.
- Priority 4
The construction of pedestrian paths connecting buildings, which share academic quadrangles, to each other.
- Priority 5
The construction of sidewalks and bicycle paths along all campus entrance roads leading to Gemini Boulevard.
- Priority 6
The construction of pedestrian paths connecting the proposed commuter parking lots and residential areas, on the southern portion of the campus, to the academic core.

POLICY 1.4.2: Pedestrian crosswalks shall be located at all points where pedestrian and other non-vehicular circulation crosses Gemini Boulevard, as well as at all access routes into campus.

POLICY 1.4.3: In order to encourage greater pedestrian and non-vehicular activities, students which reside on-campus shall receive parking permits that restrict them from parking outside of residential parking areas.

UCF Campus Master Plan 1995-2005



2.12 INTERGOVERNMENTAL COORDINATION

GOAL 1: To achieve the goals, objectives, and policies of the University Master Plan through the use and promotion of intergovernmental coordination with local, regional, and federal government entities.

OBJECTIVE 1.1: To promote land use compatibility between the University and host local government through the coordination of the University's Master Plan with the comprehensive master plans of the host community.

POLICY 1.1.1: It shall be the policy of UCF that proposed amendments to the comprehensive plan of Orange County which have the effect(s) of changing land uses or policies that guide the development of land within the context area, affect the provision of local services, or which otherwise impact University facilities or resources shall be submitted to the University Director of Facilities Planning for review and comment.

POLICY 1.1.2: The University shall establish, in conjunction with Orange County a process for reciprocal review of comprehensive plans.

POLICY 1.1.3: Proposed amendments to the adopted campus master plan which exceed the thresholds established in Chapter 240.155(9), F.S., shall be transmitted to the Orange County Planning Department, East Central Florida Regional Planning Council, St. Johns River Water Management District, Florida Game and Fresh Water Fish Commission, Florida Department of Transportation, Florida Department of State, Florida Department of Environmental Protection, Florida Land Management Advisory Council, and the State of Florida Department of Community Affairs for review in accordance with the procedures established in Chapter 6C-21, Part 1, Florida Administration Code.

POLICY 1.1.4: Proposed amendments to the campus master plan which do not exceed the thresholds established in Chapter 240.155(9), F.S., and which have the effect of changing the manner in which development on campus may occur or impacting off-campus facilities, services or natural resources, shall be transmitted to the Orange County Planning Department for a courtesy review.

POLICY 1.1.5: The University's Director of Facilities Planning shall arrange one or more meetings with appropriate Orange County officials to determine an appropriate process for reciprocal review and comment of appropriate elements of the UCF campus master plan by local government officials, and of appropriate elements of local government comprehensive plans by the University.

POLICY 1.1.6: Every effort shall be made to formalize the terms and conditions of the reciprocal plan review process through an interlocal agreement or memorandum of understanding.

OBJECTIVE 1.2: To establish administrative procedures and coordination mechanisms for the reciprocal review of campus and host community development plans

POLICY 1.2.1: It shall be the policy of UCF that proposed development within the context area which has the potential to impact or affect University facilities or resources shall be submitted to the University's Director of Facilities Planning for review.

POLICY 1.2.2: The UCF Director of Facilities Planning shall meet with local officials to establish the criteria and thresholds for development proposals which would be subject to review

by the University. The construction or renovation of single-family homes, and other small scale developments are to be excluded from review by the University.

POLICY 1.2.3: Except when otherwise stated in Section 240.155, F.S., the provisions of the Campus Master Plan and associated campus development agreement supersede the requirements of Part II of Chapter 163, F.S.

POLICY 1.2.4: University officials shall participate and cooperate with local officials in the review of proposed campus development to assess potential impacts on local, regional, and state resources and facilities until execution of the campus development agreement.

POLICY 1.2.5: Once the campus development agreement is executed, all campus development may proceed without further review by the host local government if it is consistent with the adopted Campus Master Plan and associated campus development agreement.

POLICY 1.2.6: When it has been determined that proposed development on campus would have an adverse impact on local facilities, services or natural resources, University officials shall participate and cooperate with local officials and representatives from appropriate regional and state agencies in the identification of appropriate strategies to mitigate the impacts of campus development on local, regional, and state resources and facilities.

POLICY 1.2.7: University officials shall participate and cooperate with local officials in the review of proposed development within the context area to assess potential impacts on University resources and facilities.

POLICY 1.2.8: When it has been determined that proposed development on campus would have an adverse impact on local services, facilities or natural resources, University officials will participate and cooperate with Orange County and other pertinent regional and state agencies in the identification of appropriate strategies to mitigate the impact consistent with the terms and conditions of the interlocal agreement.

POLICY 1.2.9: UCF shall seek to execute a memorandum of understanding with Orange County that would require Orange County to transmit to the UCF Office of Facilities Planning any application for Development Order or Construction Permit within the designated context area surrounding the University which is subject review under Policy 1.2.2 above.

POLICY 1.2.10: When it has been determined that proposed development within the designated context area would have an adverse impact on the University's facilities and resources, UCF officials will participate and cooperate with local, regional or state officials in the identification of appropriate strategies to mitigate the impacts on UCF facilities and resources.

POLICY 1.2.11: Any dispute between the University and a host or affected local government regarding the assessment or mitigation of impacts shall be resolved in accordance with the process established in Subsection 240.155 (8), F.S.

OBJECTIVE 1.3: To assess and mitigate the impacts of on-campus development on the surrounding community, host and affected local governments, and service providers.

POLICY 1.3.1: As provided for in s. 240.155, F.S., within 270 days after adoption of the Campus Master Plan by the Board of Regents, a draft Campus Development Agreement shall be transmitted to appropriate host and affected local governments. This Agreement must:

Identify geographic area covered by the Agreement;

Establish the duration of the Agreement (5-10 years);

Identify LOS Standards for public services and facilities, the entity to provide these services and facilities and any financial arrangements between the Board of Regents and the service provides;

Determine impact of proposed campus development on identified public services and facilities and any deficiencies likely to occur as a result;

Identify facility improvements to correct deficiencies;

Identify the Board of Regents' "fair share" of the costs of needed improvements; and
Be consistent with adopted Campus Master Plan and host local government comprehensive plan.

POLICY 1.3.2: The Board of Regents and host government shall execute the Campus Development Agreement within 180 days after receipt of the draft agreement.

POLICY 1.3.3: Once the Campus Development Agreement is executed, all campus development may proceed without further review by the host local government if it is consistent with the Campus Development Agreement and the adopted Campus Master Plan.

POLICY 1.3.4: Once the Board of Regents pays its "fair share" for capital improvements as identified in the Campus Development Agreement, all concurrency management responsibilities of the University and Board of Regents are deemed to be fulfilled.

POLICY 1.3.5: Any dispute between the University and host local government which arises from the implementation of the Campus Development Agreement shall be resolved in accordance with the process established in s. 240.155 (16), F.S.

OBJECTIVE 1.4: To use University facilities and resources as shelters and for the staging of emergency services for an emergency event.

POLICY 1.4.1: The University shall work closely with the Orange and Seminole Counties' Office of Emergency Management, the Sheriff's Department, and the American Red Cross to develop standards and operating procedures for the activation and operation of emergency shelters on campus to house on-campus and near-campus students, faculty, and staff.

POLICY 1.4.2: The University shall participate in emergency exercises to evaluate management plans and procedures.

POLICY 1.4.3: Consistent with Coastal Management Element Policy 1.3.5, the University will make available to the Orange County emergency Management office annually a listing of available public shelters on the UCF campus.

OBJECTIVE 1.4: To ensure the provision of adequate public services and facilities necessary to support development on campus and to meet the future needs of the University.

POLICY 1.4.1: The University shall coordinate the provision of additional stormwater management facilities consistent with General Infrastructure Element policies 1.1.1, 1.2.1 and 1.2.3.

POLICY 1.4.2: The University shall coordinate the provision of additional potable water facilities consistent with General Infrastructure Element Policy 2.3.1.

POLICY 1.4.3: The University shall coordinate the provision of additional sanitary sewer facilities consistent with General Infrastructure Element Policy 3.2.2.

POLICY 1.4.4: The University shall coordinate the provision of additional solid waste collection facilities consistent with General Infrastructure Element policies 4.2.2 through 4.2.5.

POLICY 1.4.5: The University shall coordinate the provision of additional electrical power and natural gas service consistent with Utilities Element policies 2.1.1 and 2.2.1.

POLICY 1.4.6: The University shall coordinate transportation system improvements consistent with Future Land Use Element policies 1.6.2 and 1.6.3, and Transit, Circulation and Parking Sub-Element policies 1.1.5, 1.1.14, 1.1.15, 1.4.1, 1.4.3, 1.4.6, 1.4.9, and 1.6.2.

POLICY 1.4.7: The University shall coordinate pedestrian and non-vehicular circulation improvements consistent with Pedestrian and Non-Vehicular Circulation Sub-element Policy 1.1.2.

POLICY 1.4.8: The University shall coordinate the provision of affordable housing off-campus consistent with Housing Element Policy 1.2.3.

OBJECTIVE 1.5: To ensure the protection of natural, historical and archaeologically significant resources from the adverse impacts of development on campus.

POLICY 1.5.1: The University shall coordinate the protection of environmentally sensitive areas, species, and natural resources consistent with Future Land Use Element policies 1.1.3, Conservation Element policies 1.1.1, 1.2.2, 1.3.2, 1.4.3, 1.4.9, 1.5.3, 1.5.4, and Landscape Design Guidelines Element Policy 1.1.1.

POLICY 1.5.2: The University shall coordinate the protection of historical and archaeologically significant resources consistent with Future Land Use Element policies 1.8.1 through 1.8.4.

2.13 CONSERVATION ELEMENT

GOAL 1: The University shall maintain a balanced commitment to the preservation and enhancement of the natural resources and ecosystems found on campus lands while accommodating the continued development and expansion of the campus' built environment.

OBJECTIVE 1.1: To maintain or improve existing air quality on campus.

POLICY 1.1.1: The University shall continue to participate in and consider those programs which will maintain or improve existing air quality on campus lands. Such programs include participation in local transportation management associations, LYNX routing and terminal servicing activities and the promotion of bicycle and pedestrian circulation improvements.

POLICY 1.1.2: UCF shall reduce mobile sources of air pollution through Transportation Element policies designed to discourage dependence on the personal automobile as the primary transportation mode on campus, and to encourage alternative modes of transportation on campus (i.e., public transit, bicycles, etc.).

POLICY 1.1.3: UCF shall minimize emissions of air pollutants from and within buildings on campus through the installation of appropriate filtering devices on fume hoods and by minimizing the storage and use of volatile and hazardous materials in campus buildings.

POLICY 1.1.4: UCF shall determine the potential impacts on air quality before construction of parking structures. Parking structures shall be designed to facilitate rapid ingress and egress of vehicles to minimize idling time, and to maximize air flow through them to eliminate pockets of stagnation where pollutant levels can build up.

POLICY 1.1.5: Within three years after plan adoption, UCF shall implement a program for the monitoring of both indoor and outdoor air quality. Indoor sampling shall occur at chemistry laboratories, kitchens, and other sites where fumes are produced. Outdoor sampling sites shall include parking lots and congested intersections. Failure to meet air quality standards adopted by the State Department of Environmental Protection shall result in an assessment of the probable cause and the preparation and implementation of a plan to improve and maintain air quality.

OBJECTIVE 1.2: To conserve, appropriately use, and protect the quantity and quality of projected water sources.

POLICY 1.2.1: By 1997, the University shall initiate a study of local groundwater conditions relative to establishing a cone of influence about each potable water wellhead. The adopted campus master plan shall be amended as needed to incorporate the results of this study.

POLICY 1.2.2: The University shall coordinate with the Department of Environmental Protection and the St. Johns River Water Management District to establish a wellhead cone of influence centered about the University's potable water source wells.

POLICY 1.2.3: By 1997, the University shall initiate a study oriented to the need and feasibility of relocating the potable water wells to one or more of the preserved land areas on the campus. The adopted campus master plan shall be amended as needed to incorporate the results of this study.

POLICY 1.2.4: The University shall continue to monitor and test raw well water, destined for potable use, on a daily and monthly basis.

POLICY 1.2.5: The University shall continue to monitor and test treated potable water on a daily and monthly basis.

POLICY 1.2.6: The University shall continue to monitor Lake Claire compliance with existing standards for water quality. Within one year after adoption of the master plan, the University shall implement a program to monitor all surface waters, including Lake Lee, for compliance with existing standards for water quality.

POLICY 1.2.7: The University shall continue to implement a comprehensive water conservation program, to include:

- (1) the use of treated wastewater effluent for an expanded campus irrigation system and chilled water system make-up water,
- (2) the use of automated timers and other irrigation flow monitoring mechanisms,
- (3) xeriscape landscape treatments for new building construction and new campus common areas, and
- (4) the use of low flow and low flush fixtures in new building construction.

POLICY 1.2.8: The University shall not undertake activities on-campus which would contaminate groundwater sources or designated recharge areas unless provisions have been made to prevent such contamination or otherwise provide mitigation for such activities so as to maintain established water quantity and quality standards.

POLICY 1.2.9: The University shall further protect water quantity and quality through adherence to General Infrastructure Element policies 1.3.1 through 1.3.4.

OBJECTIVE 1.3: To designate environmentally sensitive lands for protection based on state and regionally determined criteria.

POLICY 1.3.1: As hereby established by the adoption of this Plan, the University shall maintain, in a managed natural state, all of those sites identified for preservation on the Future Conservation Areas Map (Figure 13-A). Consistent with Future Land Use Element Policy 1.1.1, no construction is anticipated in these areas except for minimal structures and improvements necessary to ensure safe access and essential support functions.

POLICY 1.3.2: Within two years after adoption of the master plan, the University shall coordinate with the Florida Game and Fresh Water Fish Commission and other appropriate state and regional environmental agencies to conduct a management study for designated Conservation areas. The scope of this study shall include, but not be limited to:

- (1) Maps depicting the location of vegetative communities and management units within designated Conservation areas;
- (2) Identifying the University entity with responsibility for management of designated Conservation areas;
- (3) A description of how each management unit will be maintained or restored;
- (4) A monitoring and evaluation schedule;
- (5) A plan for the removal and control of exotic plants and wildlife;
- (6) A description of compatible uses; and
- (7) Developing specific guidelines to ensure the protection of the natural areas in the Arboretum.

The adopted campus master plan shall be amended as needed to incorporate the results and recommendations contained in the management study.

OBJECTIVE 1.4: To conserve, appropriately use, and protect native vegetative communities and wildlife habitat.

POLICY 1.4.1: The University shall develop the natural areas within the campus as a system of interconnected wetlands linked with upland buffers and preserves, as shown on the Future Conservation Areas Map (Figure 13-A).

POLICY 1.4.2: The University shall use plant species that are indigenous to the natural plant communities of the Central Florida area. In cases where non-invasive exotic plants are used to enhance the landscape, plantings shall be limited to those non-invasive species that are able to resist periods of drought and which require little fertilization and the use of pesticides.

POLICY 1.4.3: It is the intent of UCF to remove all non-native invasive plants (whether grasses, shrubs or trees) which are identified on the Exotic Pest Plant Council's "Florida's Most Invasive Species List" from the campus grounds. As these species are located on the campus, UCF shall coordinate with the Florida Department of Environmental Protection and other appropriate governmental entities to ensure the proper removal and disposal of these exotic species.

POLICY 1.4.4: UCF shall establish a buffer of 50 feet for upland areas adjacent to identified on-campus wetland areas.

POLICY 1.4.5: Before any encroachment into the buffer established in Policy 1.4.4 above is authorized and a plan of development approved, UCF shall review all available environmental and economic options (including the costs of mitigation). If this review indicates that encroachment into the buffer is the only viable option, then UCF shall pursue all reasonable efforts to minimize and mitigate any unavoidable impacts.

POLICY 1.4.6: Any proposed development adjacent to an environmentally sensitive area shall be carefully sited and integrated into the existing landscape to have minimal visual impact on the area. Landscape treatment shall preserve significant existing vegetation to allow a gracious transition from developed areas to undeveloped areas to preserved areas. The existing vegetation shall serve to essentially buffer proposed development in order to maintain the natural and undeveloped character of the area. Biological and hydrological impacts to environmentally sensitive area shall be avoided or minimized.

POLICY 1.4.7: Copies of land development criteria and standards which reflect the policies contained in the adopted campus master plan shall be provided to design consultants and appropriate University staff. The University shall standardize the construction review process to assure adherence to appropriate master plan policies.

POLICY 1.4.8: In order to consider the feasibility of plant or animal species relocation elsewhere on the campus, the University's Facilities Planning Director or Physical Plant Director shall continue to provide the appropriate UCF department 2 weeks minimum written notice of the pending development of an undeveloped natural vegetation site.

POLICY 1.4.9: Should periodic controlled management burns of selected preserve areas of xeric or other pyroclimatic native habitat take place i.e., sandhill, upland pine, pine flatwoods, etc.), such activities shall comply with all applicable regulatory guidelines and shall include direct coordination with the Florida Department of Agriculture and Consumer Services' Division of Forestry and the fire departments of Orange and Seminole counties.

OBJECTIVE 1.5: To restrict university activities known to threaten the habitat and survival of threatened and endangered species and species of special concern.

POLICY 1.5.1: The University shall continue to require the use of best management construction practices, including the use of soil stabilizers, silt screens, surface moisture applications and other techniques to reduce the impact of development activities.

POLICY 1.5.2: UCF shall continue to protect and conserve threatened and endangered species of plants and animals, and species of special concern, as required by the Endangered Species Act of

1973, as amended, Chapter 39, F.A.C., and federal and state management policies relating to the protection of threatened and endangered species, and species of special concern.

POLICY 1.5.3: During the initial planning phase of any physical changes to the campus, the University shall perform a census of wildlife and plants in the area to be affected. Plants or animals identified in the "Official Lists of Endangered and Potentially Endangered Fauna and Flora in Florida", which is updated annually by the Florida Game and Fresh Water Fish Commission, or otherwise afforded protection by the host communities and state and federal agencies, shall be noted. Protection plans for those identified species shall be formulated consistent with those of the host communities and appropriate state and federal agencies.

POLICY 1.5.4: University personnel shall, when encountering listed species, follow procedures and seek consultation with the appropriate agencies as identified in the Florida Game and Fresh Water Fish Commission's "Wildlife Methodology Guidelines", dated January 15, 1988.

OBJECTIVE 1.6: To protect and conserve the natural functions of soils, lakes, floodplains, and wetlands.

POLICY 1.6.1: UCF shall require that appropriate methods of controlling soil erosion and sedimentation to help minimize the destruction of soil resources be used during site development and use. Such methods shall include, but not be limited to:

- Phasing and limiting the removal of soil;
- Minimizing the amount of land area that is cleared;
- Limiting the amount of time bare land is exposed to rainfall;
- Use of temporary ground cover on cleared areas if construction is not imminent;

Special consideration is to be given to maintaining vegetative covered areas of high soil erosion (i.e., banks of streams, steep or long slopes, stormwater conveyances, etc.).

POLICY 1.6.2: The University shall minimize stormwater-borne pollutants generated as a result of University operations and maintenance practices through adherence to General Infrastructure Element policies 1.3.1 through 1.3.4.

OBJECTIVE 1.7: The University shall continue to implement a variety of existing programs and conserve the use of energy on the campus.

POLICY 1.7.1: Energy conservation fixtures, air conditioning and lighting systems and other building specific energy use and management techniques shall continue to be a required element of all new buildings constructed on the campus.

POLICY 1.7.2: Where feasible, existing buildings shall be retrofitted with energy conservation lighting fixtures.

OBJECTIVE 1.8: To maximize on-campus reclamation of hazardous materials and consumer products.

POLICY 1.8.1: All University buildings shall be designed with facilities to accommodate collection, storage and disposal of recycled materials.

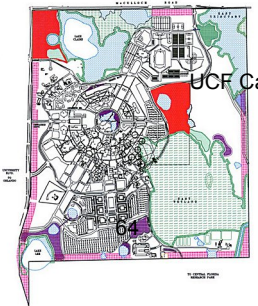
POLICY 1.8.2: The University shall coordinate on-campus recycling programs with those of local government in regard to materials collected, and disposal/collection procedures.

POLICY 1.8.3: The University shall provide on-campus facilities for the collection and storage of hazardous materials used in University operations as required by federal, state and local regulations.

POLICY 1.8.4: The University shall implement academic programs that promote awareness of environmental impacts of resource recycling.

POLICY 1.8.5: The University shall implement hazardous materials handling and storage procedures to include as a minimum the proper containerization, classification and labeling of all hazardous waste.

POLICY 1.8.6: The University shall utilize only licensed hazardous waste transportation and disposal companies.



2.14 CAPITAL IMPROVEMENTS

GOAL 1: To provide facilities to meet the academic needs of a student enrollment which will exceed 45,000 students during the early part of the 21st century.

OBJECTIVE 1.1: To seek a reasonable share of state capital construction funds to construct teaching, research, and support facilities.

POLICY 1.1.1: All major campus construction and renovation projects will incorporate line item funding equal to approximately 10 percent of the project total cost for enhancement of campus utilities, communications, and stormwater infrastructure costs.

OBJECTIVE 1.2: To include as a part of all capital construction activities and planning, provision for the renovation, repair, upgrading, and, in some cases, elimination of existing and aging facilities that do not serve existing or future needs.

POLICY 1.2.1: Funding for building renovations will be requested to coincide with and compliment the construction of new buildings. In this way, areas which are vacated when a new building is completed are immediately renovated for the new occupants.

OBJECTIVE 1.3: To coordinate land use decisions and available resources to maintain level of service standards adopted in the campus master plan and meet existing and projected facility needs.

POLICY 1.3.1: Construction project priorities will be reviewed each year by appropriate on campus committees, but specifically by the University Master Planning Committee, to determine the order of priorities has changed due to changes in enrollment patterns or other factors such as the needs of the state to promote economic development in selected research fields.

POLICY 1.3.2: Criteria for the setting of priorities for new construction, renovations, and infrastructure will be established and will be the responsibility of the Office of Facilities Planning working with the University Master Planning Committee (UMPC), the Office of Physical Plant, and the Offices for Telecommunications and Computing. Primary criteria used in setting priorities for new construction include enrollment growth in the specific academic areas, auxiliary and Capital Improvement Trust Fund (CITF) projects required by enrollment growth sustained funding support from external sources through contracts and grants, and earmarked construction as a result of private donations.

POLICY 1.3.3: All final decisions on priorities for new construction, renovations and infrastructure rest with the President of the University.

POLICY 1.3.4: The campus 15-year project list provides a schedule of committed and projected campus capital improvements by year along with the estimated cost of those improvements. The projects included are those which the academic master plan indicates will be needed to serve the expected program mix of students who will be enrolled.

Projected costs of projects which will be state funded, and the yearly distribution of those projects, are within the estimated resource guidelines projected by the Board of Regents and Department of Education staffs. Funding for non-PECO funded projects depend on private donations, student fee collections, campus auxiliary funding sources, and the sale of revenue bonds. Non-PECO projects shown can be reasonably expected to be funded in the time frame shown in the 15-year project list.

Site locations for all planned projects shown on the 15 year project list will be shown on campus master plan drawing Figure 14-1.

OBJECTIVE 1.4: To complete studies and review enrollment patterns, classroom needs, research laboratory needs, faculty and staff office needs, and infrastructure needs in relation to projected capital improvements funding to assure that adequate facilities and supporting infrastructure will be available when needed.

POLICY 1.4.1: All campus structures will be reviewed on an annual basis to determine the need for repairs, renewal, or renovations to meet on-going and changing needs of the campus.

POLICY 1.4.2: Campus infrastructure needs will be reviewed annually to determine if electric, water, waste water treatment, and telecommunications utilities are adequate to meet the needs of the campus for the next five years.

OBJECTIVE 1.5: To be prepared to limit on-campus enrollment if adequate capital construction, including infrastructure, cannot be provided or funded.

POLICY 1.5.1: Capital budget requests each year will be consistent with the provisions of the campus master plan and with campus development agreements entered into with external agencies and stormwater infrastructure costs.

GOAL 2: To provide support facilities including utility plants, student services buildings, libraries, computer services buildings, food services buildings, and auxiliary services buildings, including a bookstore, a banking services building, and other buildings to meet the needs of students who live on or near campus.

OBJECTIVE 2.1: To seek additional funds to augment state capital construction funds.

POLICY 2.1.1: The University will seek external funds in the form of gifts and donations which can be matched by state funds to provide campus facilities.

POLICY 2.1.2: The University will obtain funding through the selling of revenue bonds to continue construction of student housing and parking structures on campus.

POLICY 2.1.3: The University will earmark funding in auxiliary enterprises budgets that can be set aside for specific construction needs such as parking lots, parking garage structures, expansion of the bookstore, and other auxiliary support space needs.

POLICY 2.1.4: The University will seek funding through the SUS Concurrency Trust Fund to meet off-campus construction requirements that may be needed as part of the campus master planning process.

POLICY 2.1.5: The University shall seek funding through local sources with the backing of the UCF Foundation and the UCF Research Foundation to construct research and special purpose facilities on campus.

Project Name: Communications Building	Project Priority: #1
Project Description: The Communications Building will be an expansion facility of approximately 73,000 S.F. to include specialized classrooms and lab facilities benefiting several thousand students enrolled in general education classes and journalism programs, including news editorial and advertising/public relations; radio-television.	
Project Funding:	Construction (1995-96) \$12,507,000
	Equipment (1996-97) 1,036,000

	Total Project Cost \$13,543,000
Gross Square Feet: 75,338	
Net Square Feet: 49,112	
Funding Source: PECO	

Project Name: Health and Public Affairs Building	Project Priority: #2
Project Description: Health & Public Affairs Building will provide approximately 63,000 S.F. of classroom, teaching and research labs, and faculty and administration offices. This will be a new expansion facility consolidating the College of Health and Public affairs into a more centralized location	
Project Funding:	Planning (1995-96) \$650,000
	Construction (1996-97) 11,090,000
	Equipment (1997-1998) 2,147,000
	Total Project Cost \$13,887,000
Gross Square Feet: 91,611	
Net Square Feet: 63,180	
Funding Source: PECO	

Project Name: Computer Center I&II Renovation Project	Project Priority: #3
Project Description: Computer Center I & II Remodeling will primarily consist of upgrading student classrooms, computer labs and faculty offices.	
Project Funding:	Construction \$2,490,070
	Equipment 672,895
	Total Project Cost \$3,162,895
Gross Square Feet: 42,736	
Net Square Feet: 30,526	
Funding Source: PECO	

Project Name: Waste Water Treatment Plant	Project Priority: #4
Project Description: This project is critical. Existing facilities are presently operating at near capacity. Projected University growth demands the construction of a new waste water treatment plant. The addition of the new plant is in keeping with the proposed goals of the University master plan.	
Project Funding:	Planning & Construction (1995-96) \$2,500,000
	Total Project Cost \$2,500,000
Gross Square Feet: 1,830	
Net Square Feet: 1,220	
Funding Source: PECO	

Project Name: Engineering Building Project	Project Priority: #5
Project Description: The proposed Engineering Building II will be an expansion facility consisting of approximately 98,000 S.F. This facility will accommodate the college's ever expanding need for classroom and teaching labs. Without this facility the academic program will be severely restricted. In addition, research labs and faculty offices will be provided.	
Project Funding:	Planning (1996-97) \$692,000
	Construction (1997-98) 12,340,000
	Equipment (1998-1999) 1,039,000
	Total Project Cost \$14,071,000
Gross Square Feet: 82,196	
Net Square Feet: 40,816	
Funding Source: PECO	

Project Name: Roadway Expansion Project	Project Priority: #6
Project Description: The Roadway Expansion is a master planning priority. Record student enrollment has increased the need for completion of the primary roadway system. This will provide a unifying effect linking all campus facilities through better traffic circulation. Additionally, the NE section of the campus will be opened up providing a much needed artery access to the campus from the north.	
Project Funding:	Planning (1996-97) \$750,000
	Construction (1997-98) 1,000,000
	Construction (1998-1999) 1,000,000
	Total Project Cost \$2,750,000
Gross Square Feet: N/A	
Net Square Feet: N/A	
Funding Source: PECO	

Project Name: Classroom Building Phase I	Project Priority: #7
Project Description: The Classroom Building Phase I will be an expansion facility of approximately 63,000 S.F. The building will consist of "High Tech" classrooms which will serve the general academic community. Additionally, teaching and research labs and faculty offices will be included.	
Project Funding:	Planning (1997) \$750,000
	Construction (1998-99) 9,375,000
	Equipment (1999-2000) 1,931,250
	Total Project Cost \$12,056,000
Gross Square Feet: 70,425	
Net Square Feet: 46,950	
Funding Source: PECO	

Project Name: Remodel HFA	Project Priority: #8
----------------------------------	-----------------------------

Building Phase II	
Project Description: Phase II of Remodeling of the Humanities and Fine Arts Building will include the first, fifth, and part of the second floors. These areas will be vacated upon completion of the Communication Building in 1997. The remodeling will provide space for the rapidly growing Department of Foreign Languages and Literatures, and the Department of History. It will also complete work such as anthropology darkrooms which were planned during Phase I, but were not completed.	
Project Funding:	Planning (1998-99) \$221,000
	Construction (1999-2000) 2,575,000
	Equipment (2000-2001) 265,225
	Total Project Cost \$3,061,225
Gross Square Feet: 38,921	
Net Square Feet: 25,947	
Funding Source: PECO	

Project Name: Physics Building Remodeling	Project Priority: #9
Project Description: The remodeling of the Physics Building will accomplish two goals. Firstly, addressing of environmental health and safety concerns, entailing asbestos removal and correction of unsafe staircases. Secondly, it will allow the Physics Department to utilize spaces vacated by Health and Public Affairs which would have moved into a new building.	
Project Funding:	Planning (1998-99) \$220,000
	Construction (1999-2000) 2,317,000
	Equipment (2000-2001) 212,180
	Total Project Cost \$2,750,180
Gross Square Feet: 64,118	
Net Square Feet: 42,745	
Funding Source: PECO	

Project Name: Classroom Building Phase II	Project Priority: #10
Project Description: This is the second phase of a proposed building dedicated to general classroom space. The resultant classrooms will be used for teaching of required core curriculum classes. This building will eliminate the need to use rental accommodation such as the UC6 multi-screen theater, adjacent to the campus.	
Project Funding:	Planning (1998-99) \$500,000
	Construction (1999-2000) 6,437,500
	Construction (2000-2001) 1,200,000
	Total Project Cost \$8,137,500
Gross Square Feet: 50,820	
Net Square Feet: 33,880	
Funding Source: PECO	

Project Name: Art Complex II - Performance	Project Priority: #11
---	------------------------------

Project Description: The new Art Complex II - Performing Arts building will be the second of three buildings comprising the Center for the Performing Arts. It will provide a 1,200 seat concert hall and a 750 seat recital hall. This facility will benefit both UCF students and faculty, and the metropolitan community of Orlando.

Project Funding:	Planning (1999-2000) \$831,210
	Construction (2000-2001) 8,120,129
	Equipment (2001-2002) 834,286
	Total Project Cost \$9,785,625
Gross Square Feet: 54,750	
Net Square Feet: 36,500	
Funding Source: PECO	

Project Name: Social Science Building	Project Priority: #12
Project Description: The proposed Social Science Building will accommodate the departments of Psychology, Sociology and Anthropology, and Political Science. There will be shared classrooms also available to general education courses, in addition to department dedicated spaces. It will allow departments such as Anthropology and Political Science, which currently do not have dedicated research laboratories, to finally get much needed facilities.	
Project Funding:	Planning (2000-2001) \$604,713
	Construction (2001-2002) 8,425,700
	Construction (2002-2003) 865,760
	Total Project Cost \$9,896,173
Gross Square Feet: 74,250	
Net Square Feet: 49,500	
Funding Source: PECO	

Project Name: Engineering Building III/ROTC	Project Priority: #13
Project Description: Engineering Building III will provide additional research, classroom, and teaching laboratory space. It will allow relocation, and expansion of some departments from the existing Engineering Building. This in turn will permit the remodeling of the existing Engineering Building, and expansion of spaces allocated to those programs remaining in it.	
Project Funding:	Planning (2000-2001) \$600,000
	Construction (2001-2002) 8,000,000
	Equipment (2002-2003) 1,400,000
	Total Project Cost \$10,000,000
Gross Square Feet: 54,741	
Net Square Feet: 36,494	
Funding Source: PECO	

Project Name: Hazardous Waste Expansion Project	Project Priority: #14
Project Description: The Hazardous Waste Expansion Facility will double the University's chemical waste storage capabilities. It	

will benefit proposed expansions of science and health programs to be housed in the renovated Physics and Engineering Buildings, as well as the new Health and Public Affairs, and Engineering Buildings. All of these programs generate radioactive wastes.

Project Funding: Planning, Construction, Equipment \$1,000,000

Total Project Cost \$1,000,000

Gross Square Feet: 3,440

Net Square Feet: 2,293

Funding Source: PECO

Project Name: Simulation and Training Building

Project Priority: #15

Project Description: The Institute of Simulation and Training is now located off campus in the Research Park. Soon to outgrow its present facilities the Institute is in need of classrooms, teaching and research labs, simulator spaces and offices. A facility on campus is needed and is in keeping with the University master plan.

Project Funding: Planning (2001-2002) \$1,064,000

Construction (2002-2003) 13,310,000

Equipment (2003-2004) 3,720,000

Total Project Cost \$18,094,800

Gross Square Feet: 73,014

Net Square Feet: 48,676

Funding Source: PECO

Project Name: Remodel Howard Phillips Hall

Project Priority: #16

Project Description: As a goal of the University master plan Howard Phillips Hall is projected to be an adjunct to the Administration Building. The building will be remodeled to accommodate offices and spaces to support the administrative functions of the University.

Project Funding: Planning (2002-2003) \$172,500

Construction (2003-2004) 2,723,440

Equipment (2004-2005) 279,268

Total Project Cost \$3,175,208

Gross Square Feet: 27,308

Net Square Feet: 18,883

Funding Source: PECO

Project Name: Business Administration II

Project Priority: #17

Project Description: Due to dramatic growth in student enrollment and the ever-increasing need for academic space, the University master plan has projected the need for an additional Business Administration Building proximate to the existing facility. The project will provide much needed classrooms, teaching and research labs and offices.

Project Funding: Planning (2001-2002) \$800,000

Construction (2002-2003) 8,200,000

	Equipment (2003-2004) 1,000,000
	Total Project Cost \$10,000,000
Gross Square Feet: 27,308	
Net Square Feet: 18,883	
Funding Source: PECO	

Project Name: Visitor Information Centers	Project Priority: #18
Project Description: The University master plan has proposed various gateways" to the University. Visitors need a consistent means by which they can find their way around campus. High tech" information centers are to be located at the various gateways" in order to direct visitors to their destinations.	
Project Funding:	Planning (2002-2003) \$200,000
	Construction (2003-2004) 2,000,000
	Equipment (2004-2005) 500,000
	Total Project Cost \$2,700,000
Gross Square Feet: 11,233	
Net Square Feet: 7,488	
Funding Source: PECO	

Project Name: Health and Public Affairs II	Project Priority: #19
Project Description: The second phase of the Health and Public Affairs Building will complete the first building dedicated to the College of Health and Public Affairs since its inception in 1989. This will permit increased enrollment in programs such as nursing, medical laboratory sciences, and public administration. It will allow for the introduction of graduate level programs in some disciplines, and overcome accreditor's comments pertaining to inadequate space in other disciplines	
Project Funding:	Planning (2003-2004) \$1,815,000
	Construction (2004-2005) 10,540,000
	Total Project Cost \$12,355,000
Gross Square Feet: 55,719	
Net Square Feet: 37,146	
Funding Source: PECO	

Project Name: Bio-Science Building Renovation	Project Priority: #20
Project Description: The existing Biological Sciences Building is twenty years old. The building currently houses the university's Air Force ROTC, medical technology program, and the physical therapy program. These spaces will be vacated when the Health and Public Affairs Building is opened. This will release space within the Biological Sciences Building to be used by the Department of Biological Sciences after renovation.	
Project Funding:	Planning (2004-2005) \$250,000
	Total Project Cost \$250,000
Gross Square Feet: 55,719	

Net Square Feet: 37,146

Funding Source: PECO

Project Name: Chemistry Building Addition
--

Project Priority: #21

Project Description: The Chemistry Building Addition will double the existing available space. The project will provide critically needed classrooms, teaching and research labs and offices. This addition is consistent with the goals of the University master plan.
--

Project Funding:	Planning (2004-2005) \$500,000
-------------------------	--------------------------------

Total Project Cost \$500,000

Gross Square Feet: 29,121

Net Square Feet: 19,414

Funding Source: PECO

Project Name: Police Facility Expansion
--

Project Priority: #22

Project Description: This facility is proposed to be a companion building to the existing police station. Located adjacent to the police station, this building will provide classrooms, a lecture hall and office spaces to support academic and self-training programs. This project is consistent with the goals of the University master plan.

Project Funding:	Planning (2004-2005) \$400,000
-------------------------	--------------------------------

Total Project Cost \$400,000

Gross Square Feet: 21,379

Net Square Feet: 14,253

Funding Source: PECO

Project Name: President's Home

Project Priority: #23

Project Description: The UCF Foundation has embarked on a fund-raising drive to help finance an on campus, accessible, home for the UCF President. The President's Home will provide an on campus venue for public relations activities hosted by the President. It will help to draw contributors on campus where they may better see the fruits of their contributions.
--

Project Funding:	(1995-2005) \$1,000,000
-------------------------	-------------------------

Total Project Cost \$1,000,000

Gross Square Feet: 5,454

Net Square Feet: 3,636

Funding Source: Auxiliary

Project Name: Honors Center

Project Priority: #24

Project Description: The Honors Center will be a resource center solely for use by honor students. It will provide dedicated study areas, a media center, and computer lab space for specific lab based coursework. Additional space may be provided for instruction of honors courses. The University currently lacks a facility dedicated to usage by honor students.
--

Project Funding:	(1996-2005) \$4,000,000
-------------------------	-------------------------

Total Project Cost \$4,000,000

Gross Square Feet: 17,741
Net Square Feet: 11,827
Funding Source: Auxiliary

Project Name: Multilingual Multicultural Center	Project Priority: #25
Project Description: The Multilingual Multicultural Center will be a new facility for the teaching of foreign languages. It will allow relocation of various portions of the Department of Foreign Languages, and the Center of Continuing Education, which are functional related, into one discrete physical unit. This will in turn release portions of the Humanities and Fine Arts Building, the Research Park, and leased portables, for other purposes.	
Project Funding:	(1996-2005) \$1,729,269
	Total Project Cost \$1,729,269
Gross Square Feet: 22,074	
Net Square Feet: 16,351	
Funding Source: Auxiliary	

Project Name: Bookstore Addition	Project Priority: #26
Project Description: The Bookstore Addition will add critically needed space to existing facilities. Dramatic increases in student enrollment and expanded curriculum requires substantial increases in management offices, inventory space and retail sales areas. The addition will approximately double the size of the existing bookstore and assist in fulfilling one of the goals of the University master plan.	
Project Funding:	(1996-2005) \$4,000,000
	Total Project Cost \$4,000,000
Gross Square Feet: 22,275	
Net Square Feet: 16,500	
Funding Source: Auxiliary	

Project Name: Student Housing	Project Priority: #27
Project Description: Student Housing is a phased project designed to meet the master plan objective of providing affordable housing units and support facilities, on campus, in keeping with projected student growth. This project is crucial to the university's capability to provide housing to 15% of the projected student body through the year 2005.	
Project Funding:	(1996-2005) \$37,000,000
	Total Project Cost \$37,000,000
Gross Square Feet: 164,105	
Net Square Feet: 109,403	
Funding Source: Auxiliary	

Project Name: Greek Park Housing	Project Priority: #28
---	------------------------------

Project Description: The Greek Village will be a new accommodation for Greek organizations active on campus. This will assist meeting a master planning goal of providing more on campus housing. The existing Greek Park is currently fully subscribed, with the last remaining lots currently in design phase. Greek housing is a popular form of on-campus housing which the university wishes to support.

Project Funding:	(1995-2005) \$6,000,000
	Total Project Cost \$6,000,000

Gross Square Feet: 26,612

Net Square Feet: 17,741

Funding Source: Auxiliary

Project Name: Greek Lodge Housing	Project Priority: #29
--	------------------------------

Project Description: The Greek Lodge will be a new facility to accommodate active Greek organizations on campus. The project will provide meeting rooms and dormitory housing for the various groups. This project is consistent with the master planning goal of providing more on-campus housing and also provides an identity" space for the lesser known and smaller organizations.

Project Funding:	(1996-2005) \$3,000,000
	Total Project Cost \$3,000,000

Gross Square Feet: 5,999

Net Square Feet: 4,137

Funding Source: Auxiliary

Project Name: Parking Garage	Project Priority: #30
-------------------------------------	------------------------------

Project Description: The increasing need for accessible and efficient parking remains critical. It is anticipated that the University will continue to remain primarily a commuter school serving the greater Orlando area. A parking shortage already exists. Construction of a parking garage containing approximately 1300 spaces is a viable option for reducing the shortage while providing convenient parking for the campus population. This project is in keeping with the University master plan.

Project Funding:	(1996-2005) \$27,000,000
	Total Project Cost \$27,000,000

Gross Square Feet: N/A

Net Square Feet: N/A

Funding Source: Auxiliary

Project Name: Printing Facility Renovation	Project Priority: #31
---	------------------------------

Project Description: The Printing Facility Renovation will completely overhaul the existing Printshop which is architecturally and operationally outdated. Numerous life safety code violations exist. The current printing equipment needs to be replaced with modern equipment. The proposed renovation will revamp the printing shop floor area, offices, and storage areas.

Project Funding:	(1997-2005) \$1,000,000
	Total Project Cost \$1,000,000

Gross Square Feet: 8,316

Net Square Feet: 5,544

Funding Source: Auxiliary

Project Name: Athletics-Baseball Stadium	Project Priority: #32
---	------------------------------

Project Description: The project includes the construction of a 1,500 seat baseball facility to be located within the UCF sports complex on the northeast quadrant of the campus. The stadium will replace a rapidly deteriorating facility which lacks accessible and efficient parking. The UCF sports programs at all levels greatly benefits the students and faculty of the university, as well as, increases the interest and encourages participation by the surrounding communities.

Project Funding:	(1997-2005) \$4,000,000
	Total Project Cost \$4,000,000

Gross Square Feet: N/A

Net Square Feet: N/A

Funding Source: Auxiliary

Project Name: Recreational Services Building	Project Priority: #33
---	------------------------------

Project Description: The location of this facility is to be near the existing Arena. Its purpose is primarily to serve general student needs. The project will contain a swimming pool, hand-ball and racquet ball courts, health club, etc. The facility will be capable of supporting intramural events and other competitions. This project will accomplish one of the goals of the University master plan.

Project Funding:	(1997-2005) \$10,000,000
	Total Project Cost \$10,000,000

Gross Square Feet: 44,353

Net Square Feet: 29,568

Funding Source: Auxiliary

Project Name: Married and Graduate Student Housing	Project Priority: #34
---	------------------------------

Project Description: One of the University master plan goals includes increasing the number of facilities available to house students on campus. Married and Graduate Student Housing will, in part, serve to meet this goal and also to reduce the scheduling, vehicular traffic circulation pressures now existing on campus.

Project Funding:	(1999-2005) \$12,000,000
	Total Project Cost \$12,000,000

Gross Square Feet: 53,223

Net Square Feet: 35,482

Funding Source: Auxiliary

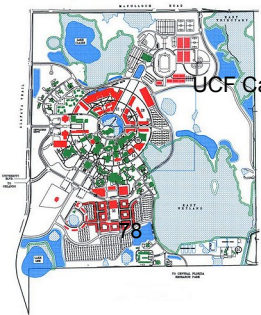
Project Name: Student Health Services Expansion	Project Priority: #35
--	------------------------------

Project Description: The proposed Student Health Services Expansion will be an addition to the existing Student Health Center and Health Education Building. The end result will be one building with additional reception, examination, doctor's office, and pharmacy space. This will allow the Student Health Center to meet the demands placed on it by a growing student body.

Project Funding:	(2000-2005) \$5,000,000
	Total Project Cost \$5,000,000
Gross Square Feet: 22,176	
Net Square Feet: 14,784	
Funding Source: Auxiliary	

Project Name: Creative School Expansion	Project Priority: #36
Project Description: The Creative School Expansion will add several special education kindergarten classrooms to the existing facility. The Creative School provides an on campus demonstration of the teaching profession which may be observed by students from the College of Education. It also allows for educational research by faculty and graduate students.	
Project Funding:	(2000-2005) \$3,000,000
	Total Project Cost \$3,000,000
Gross Square Feet: 13,306	
Net Square Feet: 8,871	
Funding Source: Auxiliary	

Project Name: Athletics-Track and Field Stands	Project Priority: #37
Project Description: The Track and Fields Stands will provide bleacher style seating for 15,000 people. This will give the university an alternate venue for events, like graduation ceremonies, which are currently performed in the basketball arena. It will also increase revenue for the Athletic Department through ticket sales.	
Project Funding:	(2000-2005) \$3,000,000
	Total Project Cost \$3,000,000
Gross Square Feet: N/A	
Net Square Feet: N/A	
Funding Source: Auxiliary	



2.15 ARCHITECTURAL GUIDELINES

GOAL 1: To develop a campus which recognizes a legacy of consistency and excellence in the architecture already in place, and sets a standard of excellence for future design endeavors.

OBJECTIVE 1.1: To define the elements of consistency (materials, massing, color, detailing, etc.) that exist in the current campus so as to derive the principals to govern future designs.

POLICY 1.1.1: Buildings in the academic core are generally between 3 and 4 stories in height.

POLICY 1.1.2: Buildings outside the core are generally between 1 and 4 stories in height.

POLICY 1.1.3: Brick is the predominant building material on campus. Masonry and glass are secondary materials of enclosure.

POLICY 1.1.4: Architectural details are generally rendered in masonry, with the "UCF arch" being the most common detail on campus.

POLICY 1.1.5: Brick colors on campus have varying ranges of red and some creams.

OBJECTIVE 1.2: To create a palette of materials, textures, colors and scale that will continue the traditions of the existing architecture.

POLICY 1.2.1: Future campus buildings shall emulate the established qualities described in objective 1.1.

POLICY 1.2.2: The predominant material on campus building facades shall continue to be brick.

POLICY 1.2.3: Architectural details may be done in mason, in order to provide visual interest and relief.

POLICY 1.2.4: The blend of brick materials that produces the "UCF Blend" shall be emphasized as the preferable blend, and brick that is not of a reddish tone or color, not currently used on campus, will be disallowed.

POLICY 1.2.5: The use of reflective glass shall be discontinued as of July 1995.

POLICY 1.2.6: The maximum height of buildings shall not exceed 4 stories.

POLICY 1.2.7: Screen walls and service area enclosure materials, colors and finishes shall be consistent with the exterior elevations of the buildings which they serve, and shall not exceed 6 feet in height.

POLICY 1.2.8: Project proposals shall comply with the guidelines set forth in the University of Central Florida Envelope and Site Criteria.

POLICY 1.2.9: The final judgment on matters concerning aesthetics and architectural character, for campus project proposals, shall be reserved for the President of the University.

POLICY 1.2.10: The Director of Facilities Planning shall review each design proposal for individual merit. Provisions shall be made so that unique or innovative design solutions appropriate to the atmosphere of a thoughtful academic community shall not be discouraged by campus policies or guidelines.

POLICY 1.2.11: The Office of the Director of Facilities Planning shall review each newly constructed, renovated or remodeled facility six months after completion so that any necessary adjustments may be made to the Architectural Design Guidelines.

POLICY 1.2.12: Proposed revisions to the adopted Architectural Design Guidelines shall be transmitted to the SUS Office of Capital Programs in the form of a proposed plan amendment and shall become effective upon approval by the Board of Regents.

POLICY 1.2.13: The designs for buildings on satellite campuses shall be coordinated through the Office of the Director of Facilities Planning, in order to ensure that the quality of those designs reflect the standards set forth by the Architectural Design Guidelines and the Master Plan.

OBJECTIVE 1.3: To adhere to existing guidelines and minimum standards for the campus graphics and signage program that will be harmonious with the architecture and landscape, and will stress permanence.

POLICY 1.3.1: Campus buildings shall have their names displayed on the building near their respective main entrances.

POLICY 1.3.2: Lettering on these signs shall be "Garamond Bold".

OBJECTIVE 1.4: To establish guidelines and minimum standards for energy efficiency and life cycle costing.

POLICY 1.4.1: New buildings shall comply with the criteria and specifications as stated in the Florida Energy Code Section 8.

POLICY 1.4.2: The east and west exposures of buildings shall contain no more than 25% of the total windows found on the project.

POLICY 1.4.3: South facing windows shall be provided with overhangs and shading to the extent possible.

POLICY 1.4.4: Minimum insulation values of R-30 for roofs and R-15 for walls shall be established and enforced to the extent possible for all air-conditioned facilities.

POLICY 1.4.5: All new and existing campus facilities shall be connected to the centrally connected Energy Management System (EMS) .

POLICY 1.4.6: Landscaping shall be positioned to help shade campus buildings.

POLICY 1.4.7: Light fixtures shall have energy saving ballasts.

POLICY 1.4.8: Energy saving features, such as occupancy controls on lighting, shall be considered for new and existing facilities.

POLICY 1.4.9: New building designs at satellite campuses shall comply with the guidelines and minimum standards for energy efficiency and life cycle costs set forth by this master plan and contained under Architectural Guidelines policies 1.4.1 through 1.4.8.

OBJECTIVE 1.5: To establish guidelines and minimum standards for site lighting, plaza, sidewalk and other hardscape materials, furniture, building illumination, and landscape materials and design, and other elements that contribute to the overall environment and safety of the campus.

POLICY 1.5.1: Hardscape materials for plazas and sidewalks shall be medium broom finished and poured in place concrete. Exceptions may be made in special areas, such as campus entrances, where a specific contrast or effect is desired.

POLICY 1.5.2: Primary walkways (800 and 1200 foot radii) shall be 16 feet in width. Secondary walkways (all others) shall be a minimum of 6 feet in width.

POLICY 1.5.3: Site lighting and furniture, hardscape materials and design shall conform with Appendix G of the UCF Architectural Guidelines.

POLICY 1.5.4: Consider the use of Crime Prevention Through Environmental Design (CPTED) concepts and principles to improve campus safety.

OBJECTIVE 1.6: To establish guidelines and standards for building siting and linkages that give consideration to campus safety issues.

POLICY 1.6.1: Future academic core buildings shall be sited so that their pedestrian entrances face the 800 foot radius (Mercury Circle) and their service entrances occur on the opposite end. Such siting will segregate vehicular and service traffic away from major pedestrian zones.

POLICY 1.6.2: Future academic buildings situated inside the 800 foot radius (Mercury Circle) shall be serviced from the 400 foot radius (Pegasus Circle). Academic buildings which fall outside of the 800 foot radius (Mercury Circle) will be serviced off of Gemini Blvd.

POLICY 1.6.3: Projects enhancing campus safety and handicapped accessibility shall be prioritized according to the following order:

- Priority 1
Projects which reduce pedestrian vs. vehicular conflicts.
- Priority 2
Projects which reduce bicycle vs. vehicular conflicts.
- Priority 3
Projects which remove handicapped accessibility barriers.
- Priority 4
Projects which enhance lighting conditions on campus.
- Priority 5
Projects which reduce bicycle vs. pedestrian conflicts.

OBJECTIVE 1.7: To establish guidelines and minimum standards for architectural treatments along the campus edges, that coordinate with the host community.

POLICY 1.7.1: An information kiosk, made of brick, shall be located at each (existing or proposed) vehicular entrance into campus.

POLICY 1.7.2: Campus entrances shall be kept as open corridors looking into and out of campus.

POLICY 1.7.3: Campus entrances shall be further articulated with unique or contrasting landscape and/or architectural elements that distinguish them from campus edge treatments.

OBJECTIVE 1.8: To include references in the architectural guidelines to standards mandated by State Legislation and Standards for the State University System developed by the Office of Capital Programs.

POLICY 1.8.1: The Director of Facilities Planning shall review all project proposals to ensure compliance with the guidelines established by the Office of Capital Programs (OCP) to further the interest of the State University System (SUS) in long-term (40-year) ownership.

POLICY 1.8.2: Institutions involved in the design process of satellite facilities shall coordinate with the Office of the Director of Facilities Planning to ensure that applicable campus guidelines and SUS standards are met.

2.16 LANDSCAPE DESIGN GUIDELINES

GOAL 1: Create high quality institutional landscape settings which afford outdoor comfort, security and a rich visual quality exemplifying the diversity of Central Florida's native environments.

OBJECTIVE 1.1: Implement Landscape Concept Plans for the University of Central Florida campus (attached).

POLICY 1.1.1: Reinforce the important elements of the spatial organization defined in the Master Plan by developing an institutional landscape character for the areas outlined on the Landscape Concept Plan. This distinctive landscape can be characterized by:

- Use of plant species that are indigenous to the natural plant communities of the UCF area. Native plantings which are intended to recreate a semblance of the original communities shall utilize plants typical of the scrub and sandhill.
- Limited plant palette-contrast to native materials.
- Use of trees of like species in large groups and masses. Trees planted to highlight and identify various campus signatures or other landscape treatments shall be restricted and reserved for species that are native to the UCF area.
- Limited use of unusual horticultural specimen. In cases where non-invasive, exotic plants are used to enhance the landscape, plantings will be limited to those non-invasive species that are able to resist periods of drought and that are expected to require little use of fertilizer and pesticides.
- Selective removal or relocation of existing trees to allow spatial definition.
- Existing non-native invasive plants (whether grasses, trees or shrubs) may be designated for removal from the campus grounds if such exotics are listed on the Exotic Pest Plant Council's list of "Florida's Most Invasive Species". As these species are located on the campus, UCF staff shall coordinate with the Florida Department of Environmental Protection and other appropriate governmental entities to ensure the proper removal and disposal of these exotic species.
- Limited use of shrubs, hedges and ground cover.
- Use of xeriscape principles and cover to conserve water and reduce chemical use.

POLICY 1.1.2: Develop the campus landscape outside of the institutional zone with the following criteria:

- Plant palette of indigenous plant material selected for availability and maintenance requirements.
- Use of trees in masses of like species to small groupings of 3-5 trees.
- Use of plants in informal groupings.
- Limited use of shrub masses.

POLICY 1.1.3: Develop a signature landscape treatment for all of the entrances which will initiate the institutional landscape character. Consider selecting a signature tree and using this tree at all entries in a twisted grid arrangement with a grass ground plane.

POLICY 1.1.4: Reinforce and improve circulation hierarchy by developing distinct landscapes for each road type, intersections and the pedestrian/tram/service loop.

Entrance Roads: Median - Southern Magnolia - Single row -e.g. 6' of clear trunk (min.)

Edge - Enhance native vegetation with natural random placement of Oaks, Pines, Sweet Bays, Myrtles and other indigenous materials

Primary Loop Road: Median - Staggered row of Oaks 30' on center

Edge adjacent to developed areas - Single row of Oaks, screen surface parking lots with low mounds and shrubs.

Edge adjacent to preserve/natural areas - Preserve and enhance existing vegetation with indigenous plant material.

Campus Core Loop and Connector - Align connector with double row of Red Maple, Loblolly Bay, or Southern Magnolia; single row of Red Maple, Loblolly Bay, or Southern Magnolia on core loop road at regular spacing.

Secondary Road - Align with alternative street tree to contrast with Primary Loop Road.

Pedestrian and Service Loop Road - Align with Red Maple, Loblolly Bay, or Southern Magnolia.

POLICY 1.1.5: Develop design and construction criteria to preserve and enhance existing native vegetation in all areas adjacent to proposed development of the northern entrance road and the completion of the loop road.

POLICY 1.1.6: Maintain and protect from encroachment the existing natural preserve and proposed arboretum while encouraging appropriate access to contribute to the high quality campus landscape setting.

POLICY 1.1.7: Provide tree canopy in all surface parking lots where possible while maintaining safety visibility and efficient security lighting

POLICY 1.1.8: Tree selection and location shall promote safety and security, enhance natural environment, provide shade for vehicles and pedestrians and minimize maintenance requirements.

POLICY 1.1.9: Reinforce, integrate and improve existing and proposed landscape mall and axis, to experience the campus as a defined sequence of unique landscapes. Define edges of malls with southern magnolias, with open lawn in the center of space.

POLICY 1.1.10: Incorporate appropriate "theme courtyards" as an opportunity for horticultural education, campus amenities and memorable campus spatial images, and to de-emphasize the pedestrian loop as a spatial organizational element.

POLICY 1.1.11: The University shall develop landscape in housing areas as follows:

- Define central mall with Southern Magnolia - with open lawn in the center of space ;
- Align streets with Red Maple ; and
- Develop courtyards with thematic plantings.

POLICY 1.1.12: The University shall show the location of future buildings so as to indicate the open spaces depicted in the Landscape Concept Plan.

POLICY 1.1.13: Standardized bicycle rack style and placement shall be used in order to achieve simplicity and uniformity. Selection of the standardized bicycle racks shall be based on efficiency, ease of use, tamper resistance, maintenance, and accessibility. Bicycle facilities should be located convenient to academic and housing areas, in a secure location. Landscape treatment shall consist of canopy trees adjacent for shade and a durable, hard paved (preferably concrete) permanent surface under the bicycle rack.

POLICY 1.1.14: Public transportation facilities should be sited to allow for visibility and ease of access, both pedestrian and vehicular. The design of the shelter should be consistent with the architectural guidelines. Landscape treatment should provide shade if not provided by shelter.

POLICY 1.1.15: Emergency access facilities shall be kept clear of any impeding landscape.

POLICY 1.1.16: All trash collection facilities shall be screened from pedestrian or vehicular traffic with either fence or wall consistent with architecture guidelines or evergreen plant material.

POLICY 1.1.17: Maintenance facilities shall be screened from pedestrian or vehicular traffic with fence, wall or evergreen plant material.

OBJECTIVE 1.2: Modify and adopt a revised plant material list upon Master Plan adoption, adding specimen species appropriate to institutional settings and eliminating use of species which necessitate excessive maintenance.

POLICY 1.2.1: In concurrence with the Landscape Concept Plan incorporate use of plants with 'institutional' appearance which will contrast with general campus native plant palette.

POLICY 1.2.2: Within one year after adoption, the campus master plan shall be amended to include the revised plant material list.

POLICY 1.2.3: The University shall monitor conformance of future construction projects with revised plant list through University design review procedures.

OBJECTIVE 1.3: Adopt standards for furnishings, lighting fixtures and graphics depicted in Figure 16.3.

POLICY 1.3.1 Projects which may enhance campus safety and handicapped accessibility shall be identified and prioritized according to the following:

1. Visibility;
2. Pedestrian/vehicular/bicycle conflicts;
3. Enhanced lighting; and
4. Removal of barriers.

POLICY 1.3.2 The University of Central Florida Director of Facilities Planning will establish administrative procedures within the University's administrative structure (e.g. a design review process) to ensure the coordination of the landscape, furnishings and graphics on the campus in accordance with the adopted guidelines. Within one year after adoption, the campus master plan shall be amended to include these procedures.

OBJECTIVE 1.4: Adopt standards for campus edge treatments.

POLICY 1.4.1 The University shall preserve existing natural buffer areas along campus edges. The University shall prohibit development for a 200' buffer area and establish understory (e.g. shrubs and ground cover) plantings of indigenous plant material in natural arrangements in areas where it has been removed.

POLICY 1.4.2 Create an institutional entrance contrasting with natural buffer/campus edge.

OBJECTIVE 1.5: Adopt standards for landscape edge treatments surrounding ponds, lakes and stormwater features.

POLICY 1.5.1: Retention lakes and drainage elements shall conform to the requirements of the local water management district regarding side slopes and wetland mitigation areas.

POLICY 1.5.2: The configuration of retention lakes shall be natural and curvilinear in outline. Rectilinear and pure geometric forms are not permitted. Wherever possible, side slopes shall vary and provide smooth transitions to existing grades. Gentle landforms around the lake shall reinforce the natural" context.

POLICY 1.5.3: Whenever possible, retention areas shall be incorporated into one single basin instead of multiple basins. Larger basins are more efficient relative to space and volumetrics. Single basins also avoid the appearance of the project area surrounded by a depressed moat".

POLICY 1.5.4: Landscape treatment for retention lakes shall respect maintenance and access setbacks but otherwise be set into a natural, existing vegetative context or planted with native material.

OBJECTIVE 1.6: Implement the landscape concept plan by allocating proportional campus landscape costs to programmed building costs for this period and by seeking supplemental funding allocated for landscape improvements.

POLICY 1.6.1: Landscape budgets shall be an integral and inviolate portion of new construction budgets, and shall be based upon a percentage of total construction costs. Funds allocated for landscape improvements shall not be redirected to fulfill funding shortages in other areas of the construction project.

POLICY 1.6.2: Landscape improvements that are independent from new building construction shall be considered as stand-alone or independent projects with respect to funding and capital expenditure programming .

POLICY 1.6.3: Apply the following descending priorities for implementing components of the Landscape Concept Plan.

- Priority 1 Entrances and Intersections
- Priority 2 Loop Road
- Priority 3 Malls and Courtyards
- Priority 4 Service/Pedestrian/Tram Loop
- Priority 5 Parking Lots

POLICY 1.6.4: By 1995-96 the University shall establish policies and procedures to retain landscape architects independently of architects for campus building, for the design and implementation of components of the Landscape Concept Plan. The adopted campus master plan shall be amended to include these procedures.

POLICY 1.6.5: By 1995-96 the University shall establish policies and procedures to seek separate funding mechanisms and revenue sources specifically targeted for landscape improvements as outlined in Master Plan. The adopted campus master plan shall be amended to include these procedures.

POLICY 1.6.6: By 1995-96 the University shall complete a campus-wide analysis to document handicapped conflicts and constraints imposed by landscape features. The adopted campus master plan shall be amended to include these procedures.

2.17 FACILITIES MAINTENANCE

GOAL 1: To implement planned and routine maintenance programs which will provide facilities funded by Education and General (E&G) funds with a safe environment conducive to teaching and research.

OBJECTIVE 1.1: To establish the acceptable use and capacity of each building.

POLICY 1.1.1: The use and capacity of each building will be determined by the vice president in charge of the facility, the Vice President of Administration and Finance and staff. Current building uses are listed in Table 17.1.

POLICY 1.1.2: The vice president in charge of a facility desiring to change the use and/or capacity of that facility shall meet with the Vice President of Administration and Finance and his staff to determine that the use is acceptable to the University and the capacity meets the minimum SUS standards.

OBJECTIVE 1.2: To establish the desired level of performance for building elements.

POLICY 1.2.1: The exterior walls, windows, and doors of campus buildings are expected to last the life of the building with maintenance as scheduled in Objective 1.3 below. Roofs are expected to last 20 years under normal weather conditions, with maintenance as scheduled in Objective 1.3 below.

POLICY 1.2.2: The interior walls, floors, stairs, doors, windows, and frames of campus buildings are expected to last the life of the building, with maintenance as scheduled in Objective 1.3 below.

POLICY 1.2.3: The structural, plumbing, and electrical systems of campus buildings are expected to last the life of the building, with maintenance as scheduled in Objective 1.3 below. HVAC systems are expected to last 15 years, and elevators are expected to last 20 years, with maintenance as scheduled in Objective 1.3 below.

POLICY 1.2.4: Exterior walls shall be brick. Exterior doors and windows shall be metal.

POLICY 1.2.5: HVAC ducts shall be sheet metal.

POLICY 1.2.6: Flat roofs shall be Fibertite.

OBJECTIVE 1.3: To establish a maintenance schedule for campus facilities.

POLICY 1.3.1: Exterior walls, windows, and doors shall receive routine maintenance every 8 years. Roofs shall receive routine maintenance every year.

POLICY 1.3.2: Interior walls shall be repainted every 8 years. Carpet shall be replaced every 7 years. Suspended acoustical ceilings shall be replaced every 10 years. Dormitory/housing interiors shall be renovated every 3 years.

POLICY 1.3.3: Systems: HVAC systems shall receive monthly maintenance. Lab hoods and exhaust fans shall be maintained every 6 months. Exposed metal structures shall be painted every 10 years. Flush valves and faucets shall be replaced every 5 years. Lab showers and eyewashes shall be tested quarterly. Backflow preventors shall be tested yearly. Electrical systems shall receive maintenance every 5 years. Elevators shall be maintained on a monthly basis, with one major renovation in the life of the elevator. Dormitory/housing systems shall receive yearly routine maintenance.

OBJECTIVE 1.4: To establish priorities for maintenance and improvement projects.

POLICY 1.4.1: In the first quarter of every year, 15 buildings shall be reviewed by the superintendents of maintenance, utilities, building services, grounds, Environmental Health and Safety, Facilities Planning, and student disability services.

POLICY 1.4.2: Immediate and serious threats to the health, safety, and welfare of students, faculty, and staff as identified by the State Fire Marshall, the Office of Environmental Health and Safety, the Director of the Physical Plant, or the Director of Facilities Planning shall receive immediate attention. Maintenance problems which could quickly become serious, as determined by the Director of the Physical Plant, shall receive immediate attention.

POLICY 1.4.3: Buildings scheduled for major interior renovations shall not receive minor interior improvements within 12 months prior to the renovation.

OBJECTIVE 1.5: To establish a schedule for eliminating deficiencies relating to current standards.

POLICY 1.5.1: At least 90 percent of E&G facility related life safety code violations shall be corrected within two years of being identified.

POLICY 1.5.2: A committee composed of the Director of the Physical Plant, staff, and representatives from Equal Opportunity/Affirmative Action, and Student Disability Services to evaluate the "ADAAG Compliance Survey" and prioritize subsequent renovations to buildings by the end of 1995.

POLICY 1.5.3: The interior of all fiberglass ducts shall be coated by the end of 2000.

POLICY 1.5.4: All buildings scheduled to be connected by fiber optics to the Energy Management System (EMS) or have Variable Frequency Drives (VFD) installed according to Table 17.7 (Library, Health & Physics, Phillips Hall, Recreational Services, and the Education Complex) shall be upgraded by the end of 1995. Existing buildings shall have an energy audit performed by the Florida Solar Energy Center by the end of 1995.

POLICY 1.5.5: A minimum of 2 buildings every year for the next 20 years shall be reroofed as funds allow.

POLICY 1.5.6: At least 90 percent of E&G facility related fire code violations shall be corrected within two years of being identified.

POLICY 1.5.7: At least 90 percent of E&G facility related building code violations shall be corrected within two years of being identified.

POLICY 1.5.8: All asbestos abatement shown in Table 17.7 shall be completed by 2000.

POLICY 1.5.9: All lead based paint in buildings to be renovated shall be identified and removed.

2.18 COASTAL MANAGEMENT ELEMENT

GOAL 1: It is the goal of the University to maintain an updated hurricane evacuation plan to ensure the safety of its students, faculty, and staff.

OBJECTIVE 1.1: The University shall monitor future development on and adjacent to the campus to ensure appropriate locations for hurricane plan components such as buildings, roadways, and emergency staging areas are located outside the 100-year floodplain.

POLICY 1.1.1: The University shall ensure that building structures continue to be built outside of the 100-year floodplain.

POLICY 1.1.2: The University shall review building codes associated with new development to determine which buildings meet the requirements to endure hurricane strength winds and conditions.

POLICY 1.1.3: The University shall ensure that future roadways are built out of the 100-year floodplain. If roads must be built in or adjacent to the 100-year floodplain, then the University shall ensure that these roads have ample elevation and drainage for 100-year flooding.

POLICY 1.1.4: The University shall monitor development on-campus to ensure at least two emergency staging areas are maintained. These areas (recreational fields, open space, or surface parking lots) will remain free of trees, power lines, and other obstacles which may inhibit emergency air lifts.

OBJECTIVE 1.2: The University shall maintain or reduce hurricane evacuation time.

POLICY 1.2.1: The University shall suggest that all campus residents remain on-campus during a hurricane which eliminates time required for an near-campus evacuation.

POLICY 1.2.2: The University shall review its Hurricane Evacuation Plan and Disaster Contingency Plan annually to: 1) update the University on procedures and actions required during a hurricane; and 2) update changes in shelter areas and access routes. Thorough knowledge of the hurricane plan will shorten implementation time.

POLICY 1.2.3: The University shall, at the time of Hurricane Evacuation Plan and Disaster Contingency Plan review, provide for and update three (3) brochures, newsletters, flyers, or other informational resource to provide to: 1) Emergency Duty Personnel and their families, 2) on-campus residents, and 3) near-campus residents. These information resources will provide details on what to do in the event of a hurricane.

OBJECTIVE 1.3: The University shall maintain ample provisions for emergency shelters.

POLICY 1.3.1: With the annual review of the Hurricane Evacuation Plan and Disaster Contingency Plan, the University shall review: 1) the number of Emergency Duty Personnel and their family members, 2) the number of on-campus residents, and 3) the number of near-campus residents. The total of these groups will determine the amount of shelter space required during a hurricane.

POLICY 1.3.2: Upon adoption of public shelter standards and criteria by the Board of Regents, the University shall survey existing facilities to determine which facilities are appropriate for use as public shelters. The University shall keep an inventory of square footage for campus-wide available shelter space.

POLICY 1.3.3: Upon completion of the shelter survey, the University shall identify those facilities that are to be retrofitted to comply with the shelter standards and criteria established by the Board of Regents. These facilities will be scheduled for retrofitting for use as public shelters as needed.

POLICY 1.3.4: With the annual plan review, the University shall review the ratio of shelter space to total persons in need of shelter space to make sure ample shelter is available.

POLICY 1.3.5: The University shall transmit an inventory of available public shelter facilities on campus to the Orange County emergency management office prior to the beginning of each hurricane season.

OBJECTIVE 1.4: The University shall increase interagency coordination regarding the Hurricane Evacuation Plan.

POLICY 1.4.1: The University shall increase coordination with its host community's hurricane evacuation planners, the Orange County Emergency Management Division, to ensure organization between the local University hurricane plan and the more regional Orange County hurricane plan.

POLICY 1.4.2: The University, with the assistance of Orange County, shall work with the American Red Cross for a comprehensive overview of the University Hurricane Evacuation Plan. The American Red Cross should help the University with shelter inspection, shelter management, shelter worker training, emergency food and goods distribution, emergency staging area requirements, and other disaster assistance.

POLICY 1.4.3: The University, with the assistance of Orange County, shall continue coordination with other local governments, counties, law enforcement agencies, and other organizations which can assist the University or may be assisted by the University in the event of a hurricane or other natural disaster.
