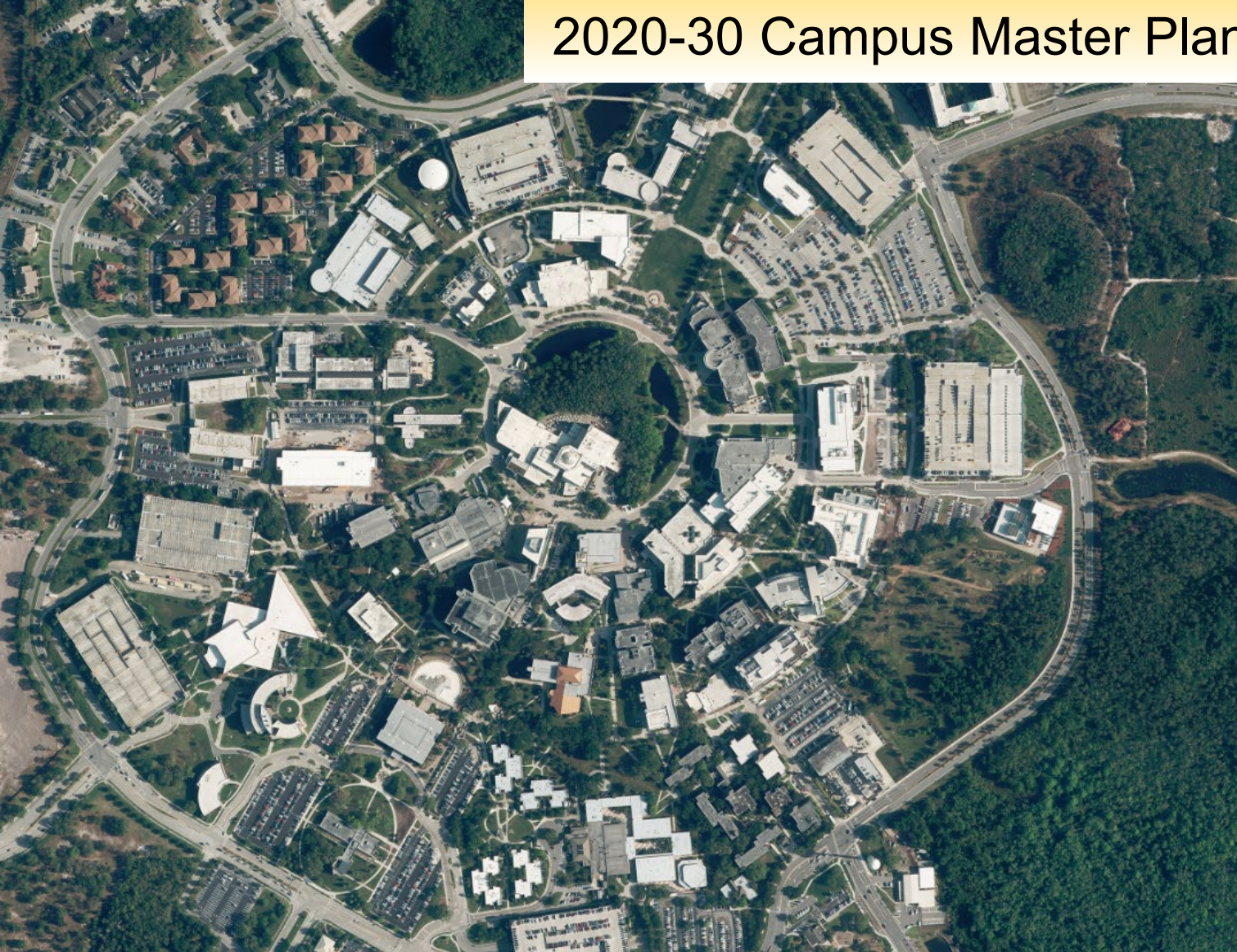


University of Central Florida

2020-30 Campus Master Plan Update



CMP FIRST PUBLIC HEARING

July 17, 2019

Agenda

1. Introductions
2. Public Comment Rules of Order
3. Regulations / Statutes / Jurisdiction
4. Format Changes
5. Content Changes
6. Schedule Review
7. Public Comments
8. Conclusion – informal Q&A

Rules of Order / Public Hearing Process

1. All speakers must complete a comment card and sign the speaker roster.
2. All speakers must be signed in prior to the start of the public comment period.
3. Each speaker will be given three (3) minutes.
4. When presenting, state your name, address, and affiliation before beginning your comment.
5. Written comments may be submitted tonight, email, or by mail. (contact info is at the end of the presentation).
6. Hold all comments and questions until after the presentation.

Board of Governors Regulations - Chapter 21

21.111 CMP shall be consistent with the State Comprehensive Plan and not in conflict with the adopted comprehensive plans of the host...and any affected local governments.

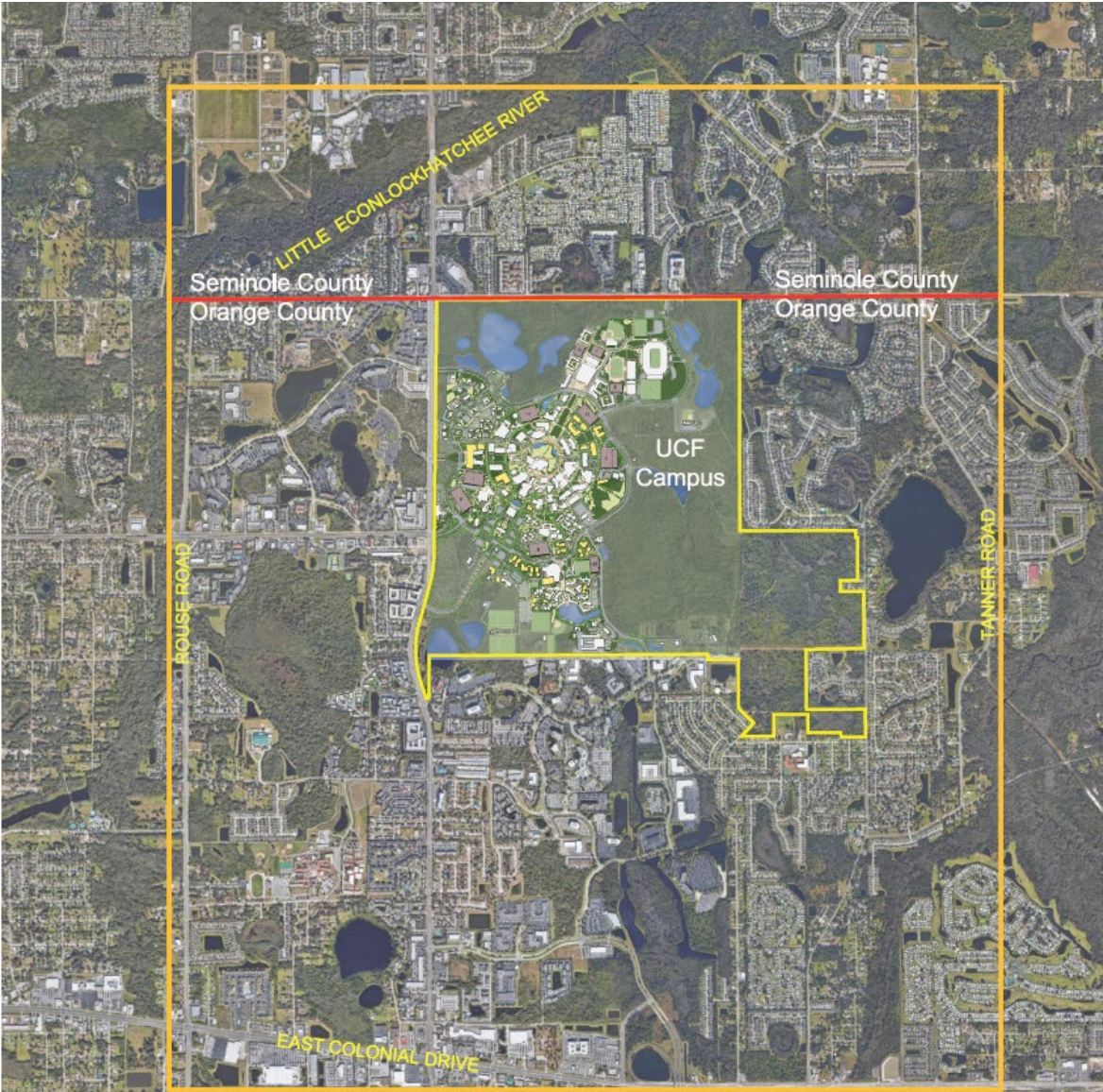
21.202 There are eight (8) REQUIRED ELEMENTS. Optional elements are permitted. Related elements may be combined.

Florida Statute 1013.30

The Campus Master Plan must contain 8 REQUIRED ELEMENTS

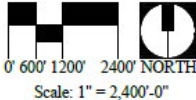
1. FUTURE LAND USE
2. HOUSING
3. RECREATION AND OPEN SPACE
4. GENERAL INFRASTRUCTURE
5. TRANSPORTATION
6. INTERGOVERNMENTAL COORDINATION
7. CONSERVATION
8. CAPITAL IMPROVEMENTS

Jurisdiction



- County Boundary
- Study Boundary
- UCF Campus Boundary

JURISDICTION of the Campus Master Plan extends only to the UCF MAIN CAMPUS



Format changes since the 2015-25 CMP

ADDING NEW ELEMENTS

The following Optional Elements were added:

8.0 PUBLIC SAFETY (New)

10.0 CAPITAL IMPROVEMENTS (Required) & IMPLEMENTATION (New)

RENAMING ELEMENTS

The following Required Element was renamed.

From: RECREATION & OPEN SPACE

To: 4.0 ATHLETICS, RECREATION & OPEN SPACE

The Elements

COMBINING ELEMENTS

The following Elements were combined:

2.0 FUTURE LAND USE (Required) & URBAN DESIGN (Optional)

5.0 GENERAL INFRASTRUCTURE (Required) & UTILITIES (Optional)

10.0 CAPITAL IMPROVEMENTS (Required) & IMPLEMENTATION
(New)

11.0 ACADEMIC & SUPPORT FACILITIES (Both Optional)

RETIRING ELEMENTS

The following Optional Elements were retired from the Campus Master Plan:

- ACADEMIC MISSION & PROGRAMS
- ARCHITECTURAL & LANDSCAPE DESIGN GUIDELINES

The New Look

2.9 GENERAL INFRASTRUCTURE ELEMENT Goals, Objectives and Policies

OBJECTIVE 1.4: To improve the existing SJRWMD permitted stormwater management system when possible and funding is available.

POLICY 1.4.1: The University shall identify storm water basins that do not meet current SJRWMD standards, develop an improvement plan that will meet current standards, and implement the plan when funding is available.

POTABLE WATER SUB-ELEMENT

GOAL 2: To continue to produce and provide quality potable water to the campus with reliable backup sources.

OBJECTIVE 2.1: To ensure that adequate potable water supply and distribution piping is available for both new and re-developed facilities.

POLICY 2.1.1: The University shall periodically design and construct potable water system improvements to (1) eliminate existing system deficiencies, (2) maintain/improve the existing system characteristics, and (3) expand the system to accommodate increased demand from projected growth. The University will continue to correct deficiencies in the piping system and maintain that piping system and its related services.

POLICY 2.1.2: The campus water system shall have redundancy built into the supply and distribution network. Supply redundancy can be achieved by multiple water plant sources (i.e. Orange County and the Central Florida Research Park) and by multiple raw water wells. Interconnects with various utilities are desired for their capability to be used as backups in emergencies. Distribution network redundancy can be achieved by creating looped piping systems and eliminating dead-end pipe systems.

POLICY 2.1.3: Future increases in campus consumptive uses, whether residential or non-residential related, shall be approved only upon a finding that existing potable water treatment and distribution facility capacity is already on-line and available to accommodate the increased need. If capacity is not available, funding will be provided so capacity can be brought on-line at the forecasted future time of need

OBJECTIVE 2.2: To meet adopted levels of service for potable water system fire flow and consumptive capacity to accommodate the proposed demand.

POLICY 2.2.1: Future development on the UCF campus which increases the demand for potable water shall be approved on the provision of a potable water distribution system which serves the proposed development under one or more of the following level of service standards:

5.0 GENERAL INFRASTRUCTURE & UTILITIES GOALS, OBJECTIVES, & POLICIES

GOALS, OBJECTIVES, & POLICIES

GOAL 1: Provide quality potable water to the campus with reliable backup sources.

OBJECTIVE 1.1: Ensure that adequate potable water supply and distribution piping is available for both new and re-developed facilities.



OBJECTIVE 1.2: Maintain the current quality and quantity of raw water available in the campus' potable water well field.

OBJECTIVE 1.3: Conserve potable water for human health and advancing research, as limited by the St. Johns River Water Management District of how much water it can lawfully draw from the Floridian Aquifer on an annual basis (*Policy 5.5*).

POLICY 1.1.1: The University shall rely upon the land use and building programs identified in the Comprehensive Master Plan, and ongoing implementation of Capital Plans/Programs, to address capacity limited by the St. Johns River Water Management District, while continuing to seek a holistic public water system approach to future development when evaluating: indoor, outdoor, and specialized-uses to protect the Central Florida Region water management district and state's precious water resources. Concurrency management systems shall establish an ongoing mechanism that ensures campus facilities and services needed to support development are available in relation to the impacts of such development.

POLICY 1.1.2: The campus water system shall have redundancy built into the supply and distribution network. Supply redundancy can be achieved by multiple water plant sources (i.e. Orange County and the Central Florida Research Park) and by multiple raw water wells. Interconnects with various utilities are desired for their capability to be used as backups in emergencies. Distribution network redundancy can be achieved by creating looped piping systems and eliminating dead-end pipe systems.

POLICY 1.2.1: The University shall perform annual reviews of major system components of the water supply and distribution system. Review shall include wells, well pumps, water treatment plant components, storage tanks, distribution pumps, backup generators, distribution piping and valves, etc. Based on review, the University shall prepare a capital improvement needs list with schedule for improvements.

POLICY 1.3.1: Regardless of first cost, all new construction and renovations that increase water use shall adhere to the mandatory provisions in the latest ANSI / ASHRAE / USGBC /IES Standard 189.1 – Standard for the Design of High-Performance Green Buildings, and follow the appropriate compliance paths to ensure campus water efficiency and conservation measures are implemented.

POLICY 1.3.2: Pursuant to Consumptive Use Permit Number 2-095-3202-11, UCF shall use all available lower-quality sources of water including reclaimed water, surface water, and storm water in place of higher quality water sources when deemed feasible pursuant to the

The Elements

SUSTAINABILITY

SUSTAINABILITY was considered for inclusion as a new element. But, the UCF Sustainability Initiatives department determined that

SUSTAINABILITY TOUCHES EVERY ELEMENT

Now SUSTAINABILITY will be found throughout the master plan.

GOALS, OBJECTIVES, & POLICIES

GOALS, OBJECTIVES & POLICIES

GOAL 1: The long-term end toward which programs or activities are ultimately directed.

OBJECTIVE 1.1: A specific, measurable, intermediate end that is achievable and marks progress toward a goal.

POLICY 1.1.1: The way in which programs and activities are conducted to achieve an identified goal.

POLICY 1.1.2: More ways by which to achieve the goal.

DATA & ANALYSIS

DATA & ANALYSIS

Narrative

D&A reports support the recommendations in each required element.

Goals, objectives, policies, standards, findings and conclusions must be based on data.

Data must be from professionally-accepted sources (best available existing data).

Tables, charts, graphs, maps, figures and data sources, and their limitations must be clearly described.

2020-30 CMP Elements

1.0 INTRODUCTION

2.0 FUTURE LAND USE
& URBAN DESIGN

3.0 HOUSING

4.0 ATHLETICS, RECREATION
& OPEN SPACE

5.0 GENERAL INFRASTRUCTURE
& UTILITIES

6.0 TRANSPORTATION

7.0 INTERGOVERNMENTAL
COORDINATION

8.0 PUBLIC SAFETY

9.0 CONSERVATION

10.0 CAPITAL IMPROVEMENTS
& IMPLEMENTATION

11.0 ACADEMIC
& SUPPORT FACILITIES

12.0 FACILITIES MAINTENANCE

Content changes (High Level) since the 2015-25 CMP

1.0 INTRODUCTION

The INTRODUCTION is:

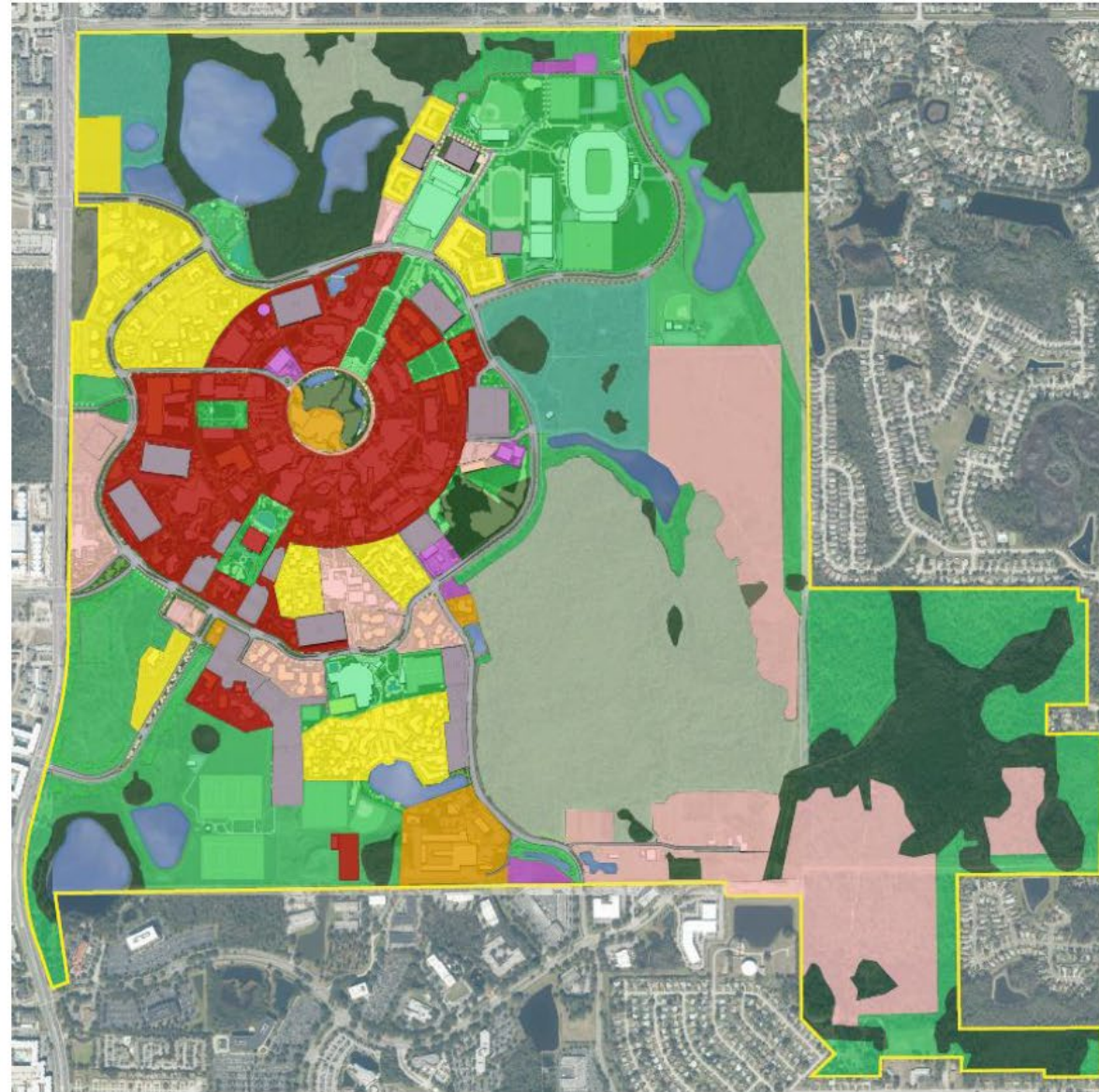
- an over-arching view of the process, changes, and improvements to the 2020-30 Campus Master Plan
- a snapshot of the University Administration and organization at the time of adoption

2.0 FUTURE LAND USE & URBAN DESIGN

- The FUTURE LAND USE element is required by Florida Statute 1013.30(3),
- Florida Board of Governors (BOG) Chapter 21.204 states :
 - “This element designates existing and future development as reflected in the goals, objectives and policies of the campus master plan, and describes how future development will be coordinated with land uses planned by the host and/or affected local governments in the planning study area.”
- URBAN DESIGN is an optional element. Optional elements are permitted under BOG 21.212.

2.0 FUTURE LAND USE & URBAN DESIGN

Figure 2.0-1
Future Land Use
Map



Land Use Category

- Academic
- Support
- Residential
- Mixed Use
- Utility
- Parking
- Recreation/ Open Space
- Wetland
- Upland Conservation
- Conservation Easement
- Lakes



3.0 HOUSING

- The HOUSING element is required by Florida Statute 1013.30(3)
- Florida Board of Governors (BOG) Chapter 21.206 states:

“This element ensures the provision of public and private housing facilities on the university campus and within the host and/or affected communities that is adequate to meet the needs of the projected university enrollment.”

4.0 ATHLETICS, RECREATION & OPEN SPACE

- RECREATION & OPEN SPACE element is required by Florida Statue 1013.30(3)
- Florida Board of Governors (BOG) Chapter 21.209 states:
“This element ensures the provision of adequate and accessible recreation facilities and open space to meet the future needs of the university.”

5.0 GENERAL INFRASTRUCTURE & UTILITIES

- The GENERAL INFRASTRUCTURE element is required by Florida Statute 1013.30(3).
- Florida Board of Governors (BOG) Chapter 21.207 states:
“This element ensures the provision of adequate capacity for stormwater management, potable water, sanitary sewer and treatment, and solid waste facilities required to meet the future needs of the university. The General Infrastructure Element shall consist of a Stormwater Management Sub-Element, a Sanitary Sewer Sub-Element, a Potable Water Sub-Element, and a Solid Waste Sub-Element.”
- UTILITIES is an optional element. Optional elements are permitted under BOG 21.212, but are not subject to review under Chapter 21.

6.0 TRANSPORTATION

- The TRANSPORTATION element is required by Florida Statute 1013.30(3).
- Florida Board of Governors (BOG) Chapter 21.205 states:

“This element assesses and makes transportation recommendations for integrating all modes of travel (bicycle, pedestrian, bus/transit, and motor vehicle) both on campus and in the off-campus planning study area. These recommendations shall coordinate policies, programs and projects with the host and/or affected local governments, as well as with other state and regional agencies.”

7.0 INTERGOVERNMENTAL COORDINATION

- The INTERGOVERNMENTAL COORDINATION element is required by Florida Statute 1013.30(3).
- Florida Board of Governors (BOG) Chapter 21.210 states:

“This element identifies and resolves goals, objectives, policies and development proposed in campus master plans that may be incompatible with adjacent local governments, and regional and state agency plans. Intergovernmental coordination shall be utilized to the extent required to carry out the provisions of this Chapter.”

8.0 PUBLIC SAFETY

- PUBLIC SAFETY is an optional element that UCF has added to the Campus Master Plan for the first time.
- Optional elements are permitted under BOG 21.212, but are not subject to review under Chapter 21.

This element will allow UCF to set goals to ensure the protection of faculty, staff, students, and visitors against threats to their well-being; and to maintain compatibility with our neighbors.

9.0 CONSERVATION

- The CONSERVATION element is required by Florida Statute 1013.30(3).
- Florida Board of Governors (BOG) Chapter 21.208 states:

“This element ensures the conservation, protection and wise use of all natural ecosystems and natural resources on the university campus and in the planning study area”. It includes the conservation of both natural resources and energy.

10.0 CAPITAL IMPROVEMENTS & IMPLEMENTATION

- The CAPITAL IMPROVEMENTS Element is required by Florida Statue 1013.30(3).
- Florida Board of Governors (BOG) Chapter 21.211 states:

“This element evaluates the need for public facilities as identified in other campus master plan elements; to estimate the cost of improvements for which the university has fiscal responsibility; to analyze the fiscal capability of the university to finance and construct improvements; to adopt financial policies to guide the funding of improvements; and to schedule the funding and construction of improvements in a manner necessary to ensure that capital improvements are provided when required based on needs identified in the other campus master plan elements. All development is contingent upon the availability of funding.”
- IMPLEMENTATION is a new optional element. Optional elements are permitted under BOG 21.212, but are not subject to review under Chapter 21.

10.0 CAPITAL IMPROVEMENTS & IMPLEMENTATION

Figure 10.0-2 Main Campus 10-Year Schedule of Capital Projects (SCP)

MAP KEY numbers are associated with Figure 10.0-1 Capital Improvements Map, not with project priority

Academic / Research Facilities

Housing Facilities

MAP KEY	SCP 2020-30 For variables (Priority, Projected Cost, Timing), see the annually-updated 5-YEAR CAPITAL IMPROVEMENTS PLAN (CIP)	BUIDING #	ALTERNATE or OLD PROJECT NAMES (AKA)	COLLEGE OR DIVISION REQUESTING	PROJECT TYPE	EXISTING GSF	RENOVATION SF	NEW CONSTR. SF	PROJECT SCOPE	2020 CIP Fund & Priority	2015 EPS Proj. #
3-YEAR COMMITTED MAIN CAMPUS FACILITIES											
1	JOHN C. HITT LIBRARY RENOVATION PH. II	002		IT&R	Renovation 5 Phases	226,506	226,506		Renovate 5 Floors for efficient/flexible interiors, more seating, study, special collections/archives, and technology workstations. Digital Initiatives Center.	CITF 1	5
MAIN CAMPUS FACILITIES CONSISTENT WITH THE CAMPUS DEVELOPMENT AGREEMENT (CDA)											
2	CAMPUS ENTRYWAYS – PHASE I			2016 CDA	Roadway				University & Alafaya Gateway features - improve roads, sidewalks, landing pads, signage, landscape	State 1 NonState	
3	CAMPUS ENTRYWAYS – PHASE II			2016 CDA	Roadway				Remaining Items from CDA	State 2 NonState	
10-YEAR PROJECTED MAIN CAMPUS FACILITIES											
4	ENGINEERING BUILDING RENOVATION	040		CECS	Renovation	130,885	TBD		Total Renovation	PECO 1	
5	BIOLOGICAL SCIENCES RENOVATION	020		COS	Renovation	116,607	116,607		Total Renovation	PECO 4	
6	THEATRE BUILDING RENOVATION – HVAC	006		CAH	Renovation	29,469	TBD		HVAC	PECO 5	
7	HOWARD PHILLIPS HALL RENOVATION	014		Campus	Renovation	64,619	64,619		Total Renovation	PECO 6	
8	LEARNING LABORATORY Active Learning, Teaching Lab, & Maker Space Facility			Campus	New Building			150,000	Multidisciplinary Classroom and Teaching Lab facility for several colleges (COS, CCIE, CECS, COM),		Spot Survey
9	RESEARCH II Science, Engineering, & Commercialization Facility		Research II	Campus	New Building			138,000	Multidisciplinary Research Facility to serve several colleges (COS, CECS, CREOL) and ORC.		16
10	WET TEACHING LAB AND EXPANDED STEM FACILITY (Classroom Lab Bldg.)			COM / BSBS	New Building			240,950	Facility to provide wet and prep labs for several programs, study space, offices, and a lecture hall.		
11	PERFORMING ARTS COMPLEX PH. I	119	Arts Complex Ph. II (Performance)	CAH	Addition	83,670	3,000	100,000	Concert hall; Proscenium theatre; Convertible space divisible into recital/lecture hall or black box theatre; Back-of-house teaching labs.		7
12	CHEMISTRY RENOVATION	005		COS	Renovation	49,073	49,073		Total Renovation		10
13	VISUAL ARTS RENOVATION & EXPANSION	051		CAH	Renovation	85,000	85,000		Total Renovation and Expansion		12/13
14	MATHEMATICAL SCIENCES RENOVATION	012	Math Sciences Building Remodeling & Renovation	COS	Renovation	106,523	106,523		Total Renovation		
15	FERRELL COMMONS E&G SPACE RENOVATION	007	Ferrell Commons (E&G Space) Renovation	Campus	Renovation	93,860	~28,000		Total Renovation of E&G space (100% of 7B, 7F, 7G, 90% of 7C, 50% of 7E.)		
16	ARBORETUM, URBAN ECOLOGY, & SUSTAINABILITY CENTER		Sustainability Center Ph. I Sustainability Center Ph. II	COS, F&S	New Building			15,000	Arboretum and Urban Ecology Center - replaces aging modular 525 Sustainability Center - for collaborative research in sustainability/energy		
17	CLASSROOM BUILDING III			Campus	New Building			80,000	A state-of-the-art facility to support enhanced teaching and learning - variety of advanced-technology classrooms and multimedia facilities. Faculty offices and support spaces.		17
18	SIMULATION AND TRAINING BUILDING			CECS	New Building			60,000	Research Facility for IST, includes lab and office space for multiple disciplines in modeling, simulation and training, immersive environments and mobile learning		
19	WELCOME CENTER EXPANSION	096		Campus	Addition	18,717		11,000	Improve recruitment of top undergrad and grad students, steer students toward strategic programs, focus on under-represented populations, advise students toward timely graduation.		20
20	RESEARCH III			Campus	New Building			150,000	Future Research Facility		
21	DINING, HOUSING, RESIDENCE LIFE FACILITY			SDES	New Building			260,000	Includes student housing and meal-plan dining hall Removed collocated Creative School		
22	SPECIAL PURPOSE HOUSING		Special Purpose Housing and Parking Garage	SDES	New Building			32,000	Greek Housing on ~7 ac. Greek Park Expansion area		
23	GRADUATE HOUSING			SDES	New Building			150,000	Graduate Student Housing		

10.0 CAPITAL IMPROVEMENTS & IMPLEMENTATION

Figure 10.0-2
(Continued)

MAP KEY	SCP 2020-30 For variables (Priority, Projected Cost, Timing), see the annually-updated 5-YEAR CAPITAL IMPROVEMENTS PLAN (CIP)	BUIDING #	ALTERNATE or OLD PROJECT NAMES (AKA)	COLLEGE OR DIVISION REQUESTING	PROJECT TYPE	EXISTING GSF	RENOVATION SF	NEW CONSTR. SF	SCOPE OF WORK	2020 CIP Funds & Priority	2015 EPS Proj. #
10-YEAR PROJECTED MAIN CAMPUS FACILITIES											
Active Recreation Facilities	24	SPECTRUM STADIUM RUST REMEDIATION	135		UCFAA	Renovation	76,527		Rust Remediation	NonState	
	25	BASKETBALL EXCELLENCE CENTER	50C	Venue Expansion and Renovation	UCFAA	Add & Reno	48,000		Renovation of The Venue. Add new student-athlete team space for dressing, training, development, rehab, nutrition, recovery, and recruiting. New office space.		
	26	SOCCER STADIUM & PARKING			UCFAA	New Bldg./Field			Soccer Stadium north of Spectrum Stadium		
	27	TENNIS COMPLEX			UCFAA	New Building		7,500	Tennis Support Building and Tennis Courts		
	28	RECREATION & WELLNESS CENTER PH. III	088		SDES	Addition	156,111	44,000	Addition the Recreation and Wellness Facility (Total to be ~200,000GSF)		
Other Facilities	29	RWC PARK PHASE IV			SDES	New Bldg./Field			Entrance Element and Field Improvements		
	30	CREATIVE SCHOOL FOR CHILDREN			Auxiliary	New Building		18,000	New Creative School to support 170 UCF families (increase of 40 families). Replaces Bldg. 24		
	31	INTERCEPT GARAGE		Parking Garage VII	Parking	New garage			Intercept Garage at University & Alafaya		
	32	RESEARCH RECEIVING, STORAGE, & DISTRIBUTION FACILITY			Support	New Building		4,000	Facility to centralize research material storage and distribution		

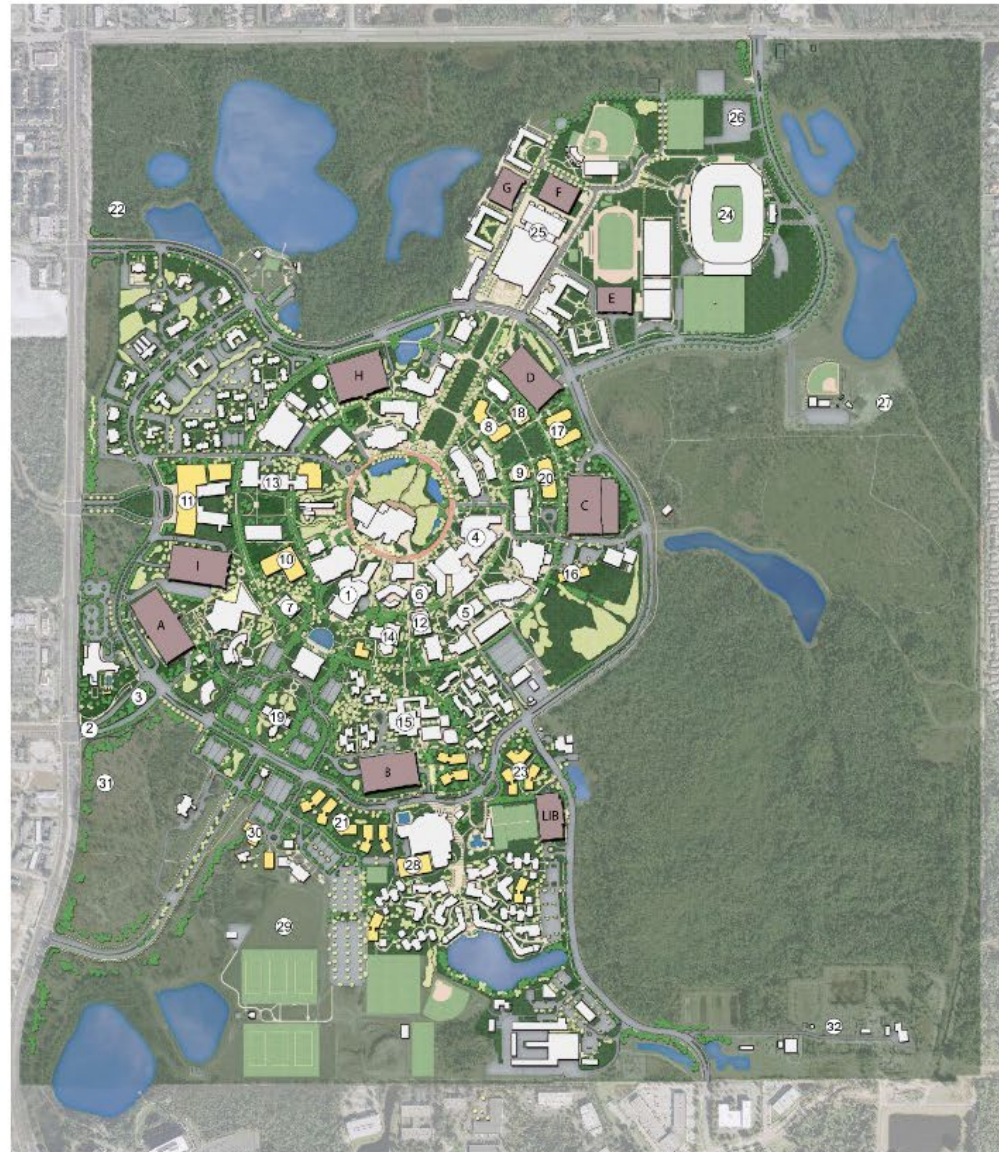
Figure 10.0-3 Satellite Campuses 10-Year Schedule of Capital Projects (SCP)

There are no map keys or maps for Satellite Campuses

DOWNTOWN CAMPUS 10-YEAR PROJECTED FACILITIES											
	CENTER FOR EMERGING MEDIA RENOVATION – EXTERIOR					Renovation				PECO 3	
	CAMPUS BUILDING II					New Building					
	CAMPUS PARKING GARAGE II					New Building					
	DOWNTOWN CAMPUS PHASE III					New Building					
	DOWNTOWN CAMPUS PHASE IV					New Building					
ROSEN COLLEGE OF HOSPITALITY MANAGEMENT 10-YEAR PROJECTED FACILITIES											
	ROSEN GARAGE			Parking		New Building					
HEALTH SCIENCES CAMPUS (LAKE NONA) 10-YEAR PROJECTED FACILITIES											
	COLLEGE OF NURSING AND HEALTH SCIENCES BUILDING		College of Nursing & Allied Health	CHPS		New Building		150,000	New academic home for College of Nursing (90KGSF). Additional space for other CHPS Units. (60KGSF)	NonState	15
	HEALTH SCIENCES PARKING GARAGE			Parking		New Building		160,000	New Parking Garage to support the Lake Nona Campus		
	UTILITIES INFRASTRUCTURE & SITEWORK – CLINICAL FACILITIES		Infrastructure and Stework Lake Nona Clinical Facilities			Infrastructure		3,400LF			
	BURNETT BIO-MEDICAL SCIENCE CENTER INFRASTRUCTURE					Infrastructure		150,000			
	INSTITUTE FOR HOSPITALITY IN HEALTHCARE			COM/RCHM		New Building		150,000			
OTHER SATELLITES 10-YEAR PROJECTED FACILITIES											
	FLORIDA SOLAR ENERGY CENTER RENOVATION		FSEC			Renovation				PECO 2	
	COASTAL BIOLOGY STATION		Turtle House	COS		New Building		9,500			19

10.0 CAPITAL IMPROVEMENTS & IMPLEMENTATION

Figure 10.0-1 Capital Improvements Map



1. John C. Hitt Library Renovation Ph. II
2. Campus Entryways – Ph. I
3. Campus Entryways – Ph. II
4. Engineering Building Renovation
5. Biological Sciences Renovation
6. Theatre Building Renovation - HVAC
7. Howard Phillips Hall Renovation
8. Learning Laboratory
9. Research II
10. Wet Teaching Lab And Expanded STEM Facility
11. Performing Arts Complex Ph. I
12. Chemistry Renovation
13. Visual Arts Renovation & Expansion
14. Mathematical Sciences Renovation
15. Ferrell Commons E&G Space Renovation
16. Arboretum, Urban Ecology, & Sustainability Center
17. Classroom Building III
18. Simulation and Training Building
19. Welcome Center Expansion
20. Research III
21. Dining, Housing, Residence Life Facility
22. Special Purpose Housing
23. Graduate Housing
24. Spectrum Stadium Rust Remediation
25. Basketball Excellence Center
26. Soccer Stadium
27. Tennis Complex
28. Recreation & Wellness Center Ph. III
29. RWC Park Ph. IV
30. Creative School for Children
31. Intercept Garage
32. Research Receiving, Storage, & Distribution Facility



11.0 ACADEMIC & SUPPORT FACILITIES

- The ACADEMIC & SUPPORT FACILITIES element is the combination of two elements that UCF has included in the Campus Master Plan since 1995.
- Optional elements are permitted under BOG 21.212, but are not subject to review under Chapter 21.

12.0 FACILITIES MAINTENANCE

- FACILITIES MAINTENANCE is an optional element that UCF has included in the Campus Master Plan since 1995.
- Optional elements are permitted under BOG 21.212, but are not subject to review under Chapter 21.

Next Steps

1. Monday, July 22 – CMP published for public/agency review (90 days)
 - Hardcopy at UCF John C. Hitt Library
 - Uploaded to FP&C website for digital review
 - Sent to review agencies (Orange County, etc.)
 - Can request hardcopies – allow 7 days for creation and requester must pay for the cost of the materials
2. Tuesday, October 22 – comments due from review agencies
3. October/November – comments evaluated, CMP updated
4. November 2019 (date TBD) – Second Public Hearing, concurrent with adoption by the BOT
5. Petitions and Objections (30 days to file with BOT)

Review Agencies

1. Orange County
2. Seminole County
3. City of Orlando
4. City of Oviedo
5. St. Johns River Water Management District (SJRWMD)
6. East Central Florida Regional Planning Council (ECFRPC)
7. Florida Department of Environmental Protection
8. Department of Transportation
9. Department of State
10. Fish and Wildlife Conservation Commission
11. Division of Historical Resources

Happy 25th Birthday!

2020-30 UCF CAMPUS MASTER PLAN UPDATE



2020-30 UCF CAMPUS MASTER PLAN UPDATE

Public Comment

- By mail:

Campus Master Plan
Facilities Planning & Construction
3528 North Perseus Loop
PO Box 163020
Orlando, FL 32816-3020

- By email:

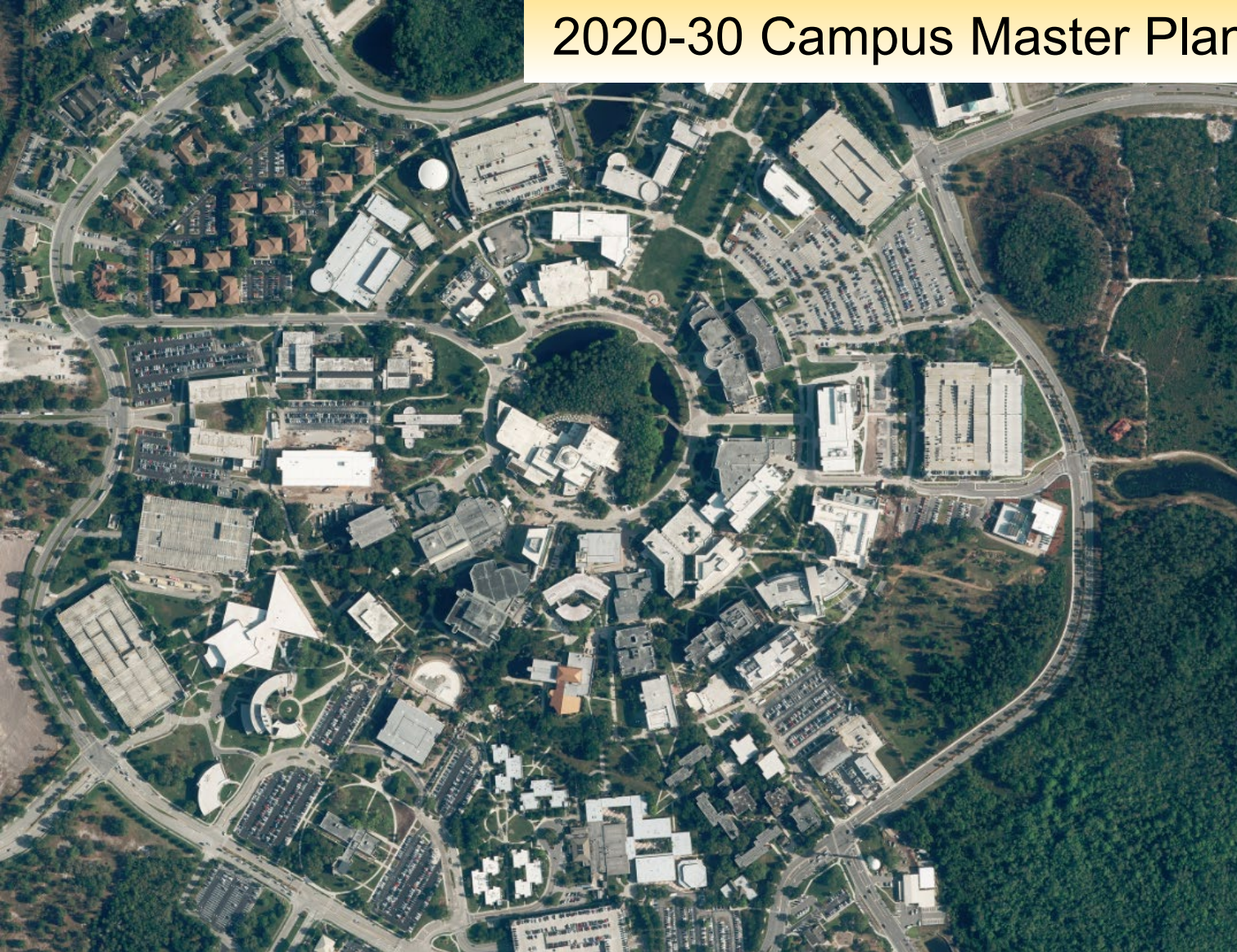
CampusMasterPlan@ucf.edu

- Website:

www.fp.ucf.edu

University of Central Florida

2020-30 Campus Master Plan Update



CMP FIRST PUBLIC HEARING

July 17, 2019